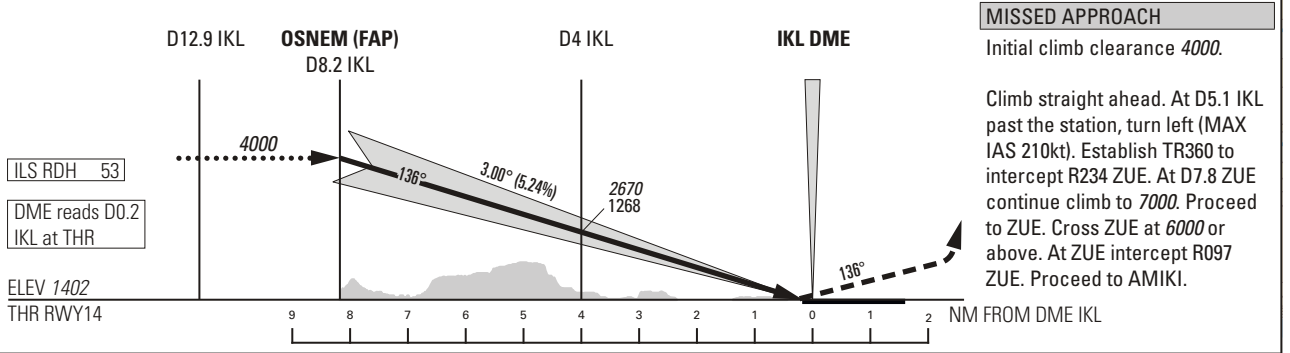
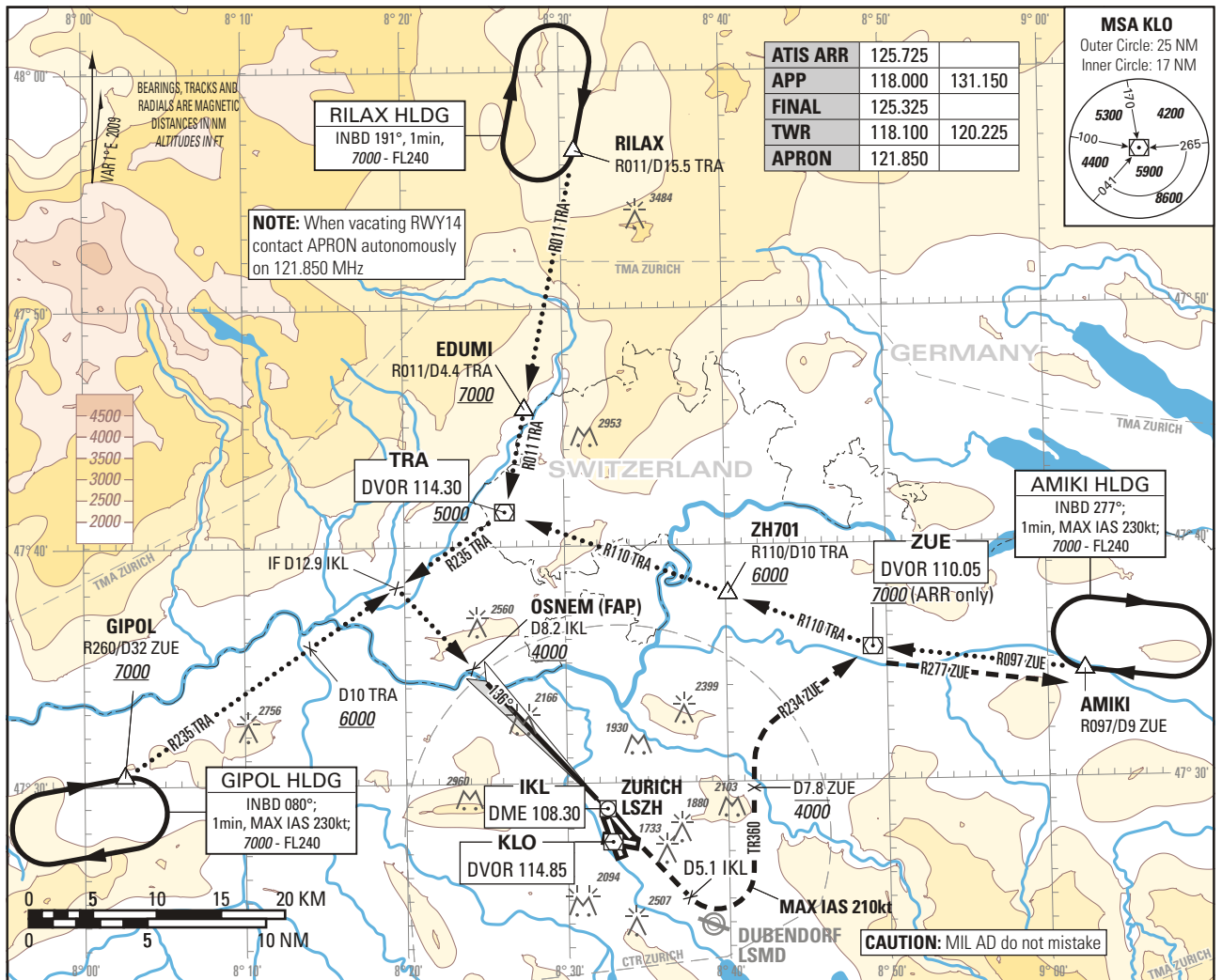


Instrument Approach Chart
(IAC) - ICAO

ELEV 1417ft

TRANSITION LEVEL by ATC
TRANSITION ALTITUDE 7000

ZURICH LSZH
ILS RWY 14
CAT II & III



OBSTACLE CLEARANCE ALTITUDE (HEIGHT)						
STRAIGHT-IN APPROACH						
	A	B	C	D	D _L	
CAT I	pressure altimeter	1563 (161)	1570 (168)	1583 (181)	1593 (191)	1596 (194)
CAT II	radio altimeter	1465 (63)	1468 (66)	1485 (83)	1498 (96)	1501 (99)
	radio altimeter and autopilot	1458 (56)	1465 (63)	1481 (79)	1494 (92)	1498 (96)
DECISION ALTITUDE (HEIGHT) ³⁾						
CAT I	pressure altimeter	1602 (200)				
CAT II	radio altimeter and autopilot	1502 (100)				

CIRCLING ¹⁾²⁾		A	B	C	D	D _L
RWY 28	right hand	2360 (950)	2470 (1060)	2710 (1300)		
	left hand					
RWY 10	left hand					

NOTE

¹⁾ Height above aerodrome ELEV 1417ft, speed and radius for CAT D and CAT D, as for CAT C ACFT, circling prohibited in a sector S of extended RCL 28 and W of extended RCL 16.

²⁾ All circling procedures temporarily suspended.

³⁾ Radio altimeter reading at CAT I DH 187ft, at CAT II DH 95ft, for lower minima PPR FOCA.

ROD	GS kt	90	110	130	150
	FT/MIN	477	584	690	796

COR: new layout, NOTE when vacating RWY14

THIS PAGE INTENTIONALLY LEFT BLANK