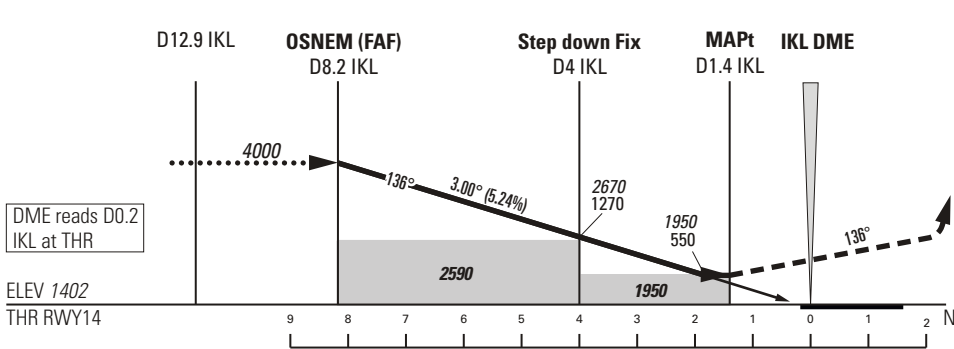
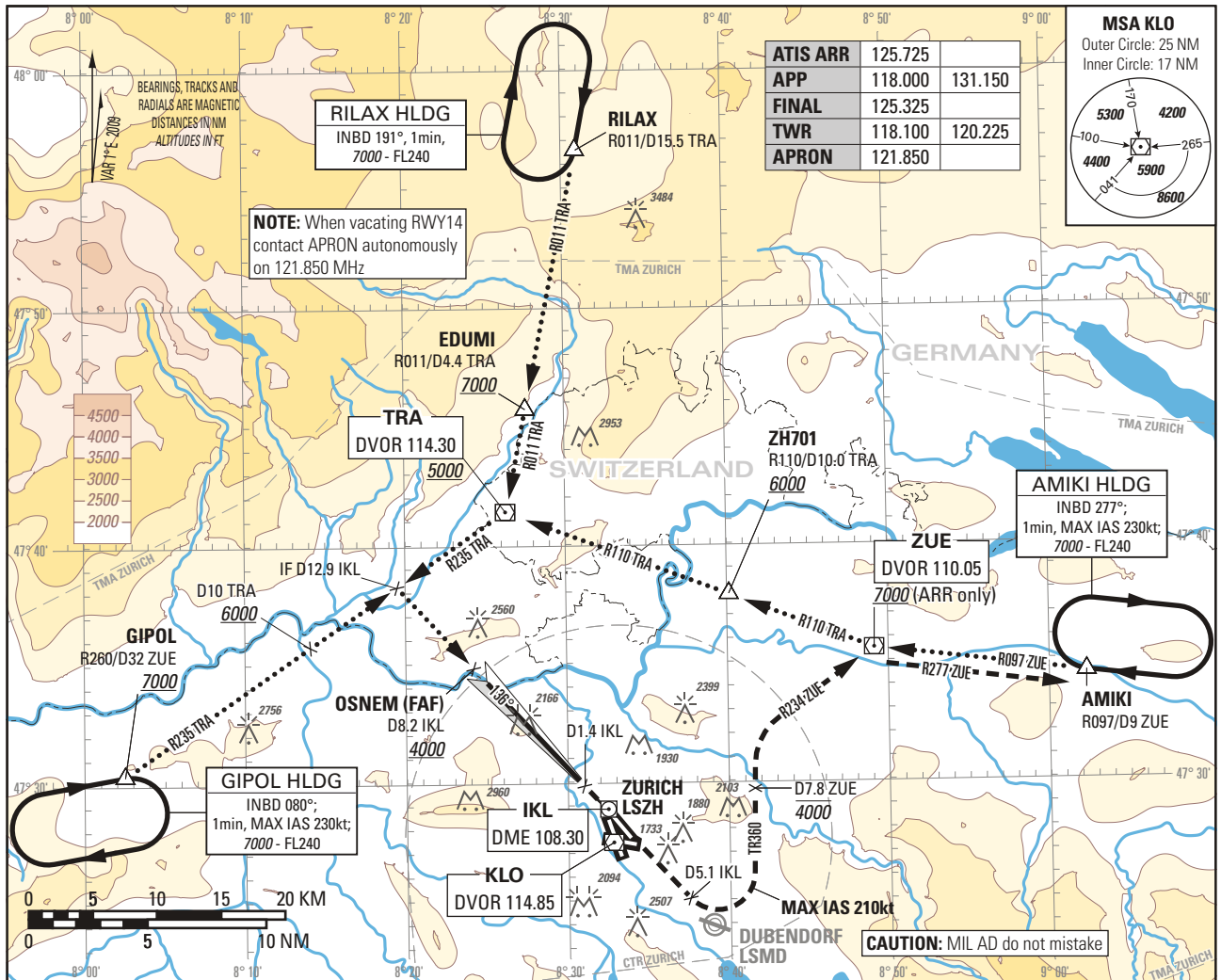


Instrument Approach Chart
(IAC) - ICAO

ELEV 1417ft

TRANSITION LEVEL by ATC
TRANSITION ALTITUDE 7000

ZURICH LSZH
LOC RWY 14



MISSED APPROACH
Initial climb clearance 4000.

Climb straight ahead. At D5.1 IKL past the station, turn left (MAX IAS 210kt). Establish TR360 to intercept R234 ZUE. At D7.8 ZUE continue climb to 7000. Proceed to ZUE. Cross ZUE at 6000 or above. At ZUE intercept R097 ZUE. Proceed to AMIKI.

OBSTACLE CLERANCE ALTITUDE (HEIGHT)		A	B	C	D
STRAIGHT-IN APPROACH		1950 (550)			
CIRCLING ¹⁾²⁾	RWY 28 right hand				
	left hand	2360 (950)	2470 (1060)	2710 (1300)	
	RWY 10 left hand				

IKL DME	RECOMMENDED CROSSING ALTITUDE (HEIGHT)
8	3940 (2540)
7	3620 (2220)
6	3300 (1900)
5	2990 (1590)
4	2670 (1270)
3	2350 (950)
2	2030 (630)

NOTE
1) Height above aerodrome ELEV 1417ft, speed and radius for CAT D as for CAT C ACFT, circling prohibited in a sector S of extended RCL 28 and W of extended RCL 16.
2) All circling procedures temporarily suspended.

ROD	GS kt	90	110	130	150
	FT/MIN	477	584	690	796

COR: new layout, NOTE when vacating RWY14

THIS PAGE INTENTIONALLY LEFT BLANK