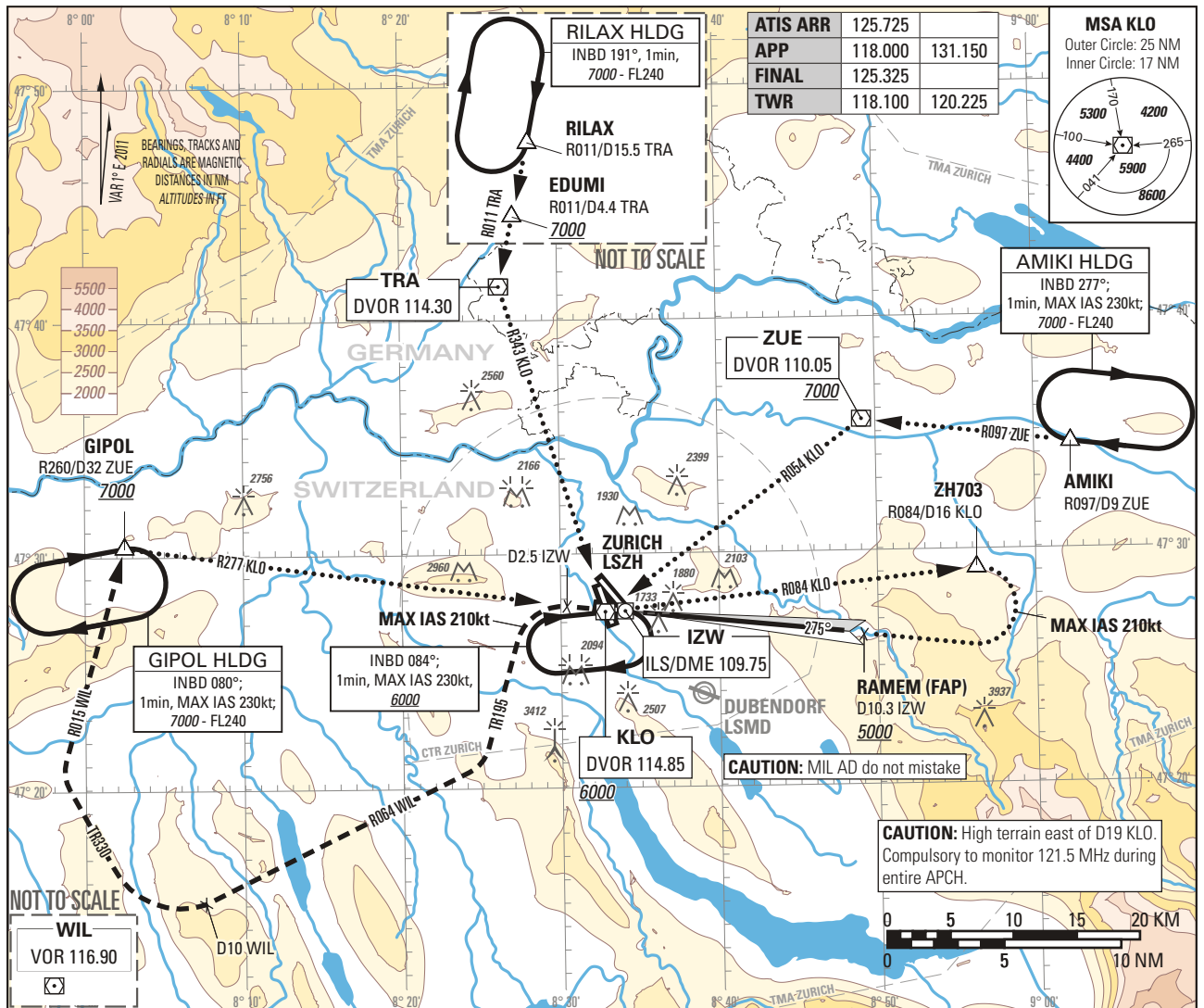


Instrument Approach Chart  
(IAC) - ICAO

ELEV 1417ft

TRANSITION LEVEL by ATC  
TRANSITION ALTITUDE 7000

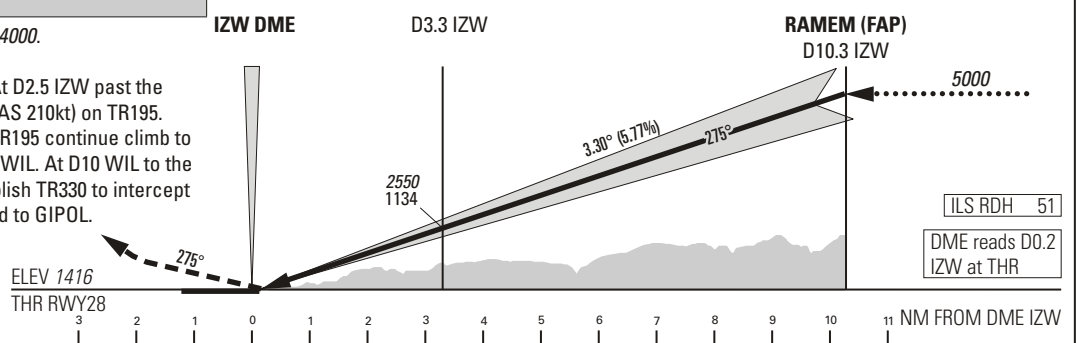
ZURICH LSZH  
ILS RWY 28



**MISSED APPROACH**

Initial climb clearance 4000.

Climb straight ahead. At D2.5 IZW past the station turn left (MAX IAS 210kt) on TR195. When established on TR195 continue climb to 7000. Intercept R064 to WIL. At D10 WIL to the station turn right. Establish TR330 to intercept R015 from WIL. Proceed to GIPOL.



Missed APCH climb gradient requirement		STRAIGHT-IN APPROACH				
		A	B	C	D	D <sub>L</sub>
		OBSTACLE CLEARANCE ALTITUDE (HEIGHT)				
2.5%	pressure altimeter	2293 (877)	2304 (888)	2314 (898)	2325 (909)	
4.0% to 3600	pressure altimeter	2061 (645)	2071 (655)	2084 (668)	2094 (678)	
		DECISION ALTITUDE (HEIGHT)				
2.5%	pressure altimeter	2831 (1415)	2842 (1426)	2853 (1437)	2863 (1447)	
4.0% to 5200	pressure altimeter	2061 (645)	2071 (655)	2084 (668)	2094 (678)	

**CAUTION**  
Do not confuse RWY 32 with RWY 28. Bright floodlight slightly N of APCH at D0.7 IZW. Expect turbulences on short final during south-westerly winds. Nuisance GPWS glidescope warning may be expected below 100ft THR.

**REMARK**  
Uncategorised ILS approach RWY 28 due to runway type: Non-instrument runway. ILS 28 signal fulfils ICAO Annex 10, CAT I specifications.

ROD	GS kt	90	110	130	150
	FT/MIN	526	642	759	876

COR: new layout, new 4% OCA/H & DA/H

THIS PAGE INTENTIONALLY LEFT BLANK