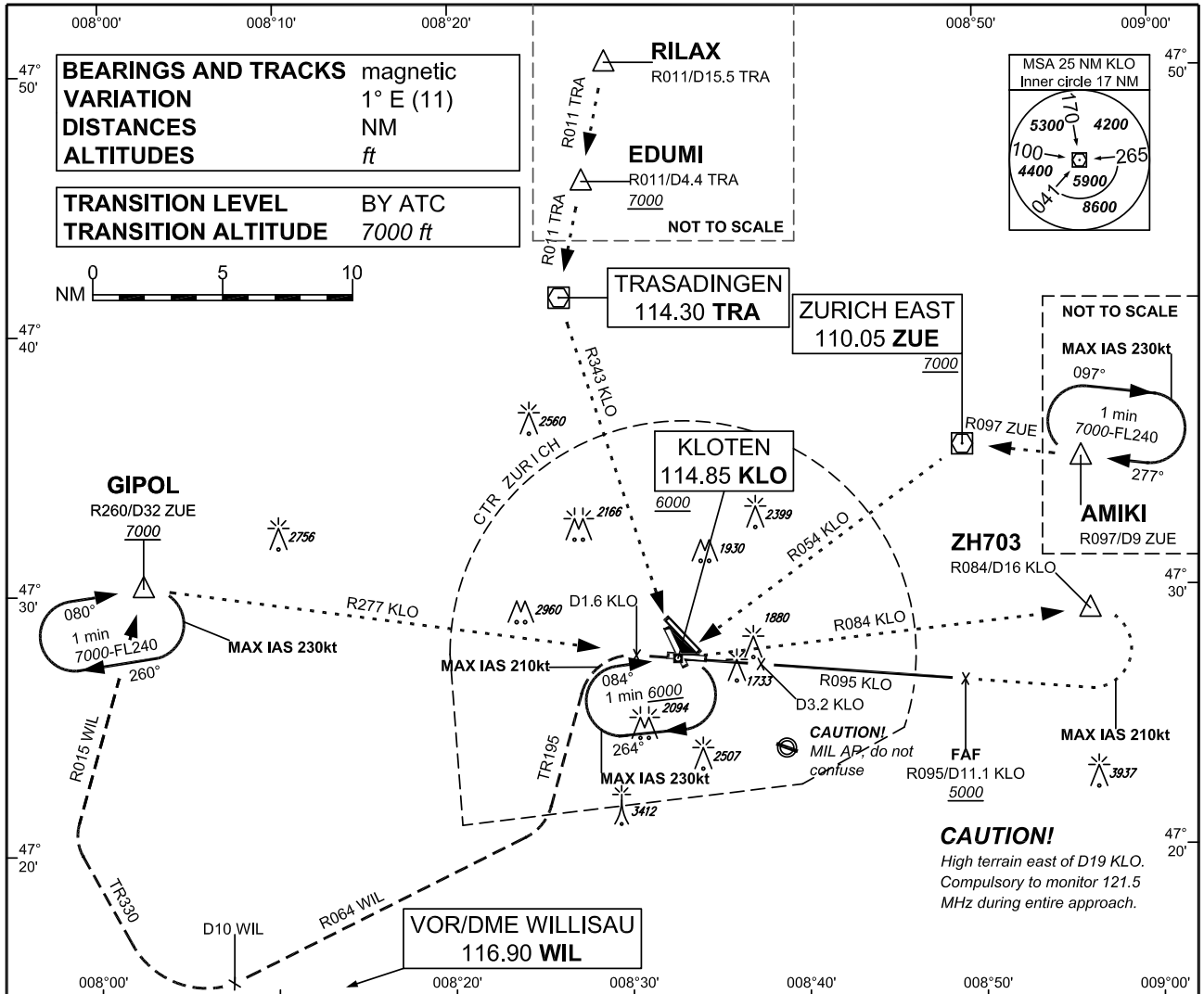


INSTRUMENT
APPROACH
CHART ICAO

ELEV 1417ft

ATIS ARR	125.725	
APP	118.000	131.150
FINAL	125.325	
TWR	118.100	120.225

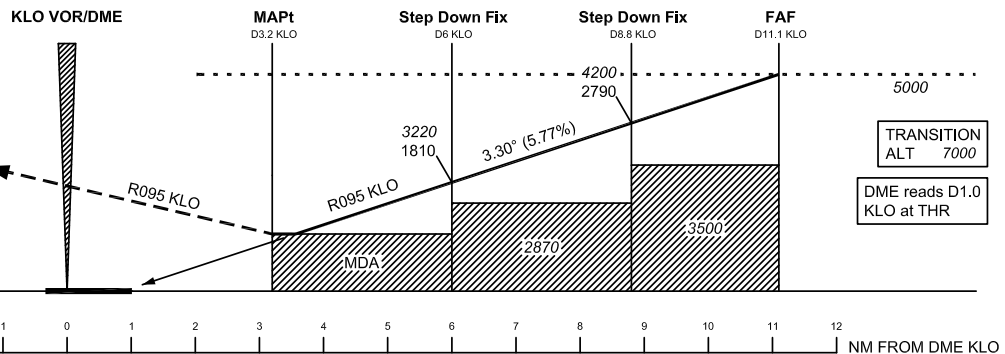
ZURICH
VOR RWY 28



MISSED APPROACH :

Climb on R095 KLO. Initial climb to 4000ft. When passing KLO continue on R275 KLO. At D1.6 KLO past the station turn left (MAX IAS 210 kt) on TR195. When established on TR195 continue climb to 7000ft. Intercept R064 to WIL. At D10 WIL to the station turn right. Establish TR330 to Intercept R015 from WIL. Proceed to GIPOL.

ELEV 1416ft
THR RWY28



OBSTACLE CLEARANCE ALTITUDE/HEIGHT (OCA/H)	Missed APCH climb gradient	A	B	C	D
STRAIGHT-IN APPROACH	2.5%	2360 / 950			
MINIMUM DESCENT ALTITUDE/HEIGHT (MDA/H)	Missed APCH climb gradient	A	B	C	D
STRAIGHT-IN APPROACH	2.5%	3070 / 1660			
	4.0% to 4700ft	2360 / 950			

ROD	GS kt	90	110	130	150
	FT/MIN	526	642	759	876

KLO DME	RECOMMENDED CROSSING ALT/HGT
11	4970 / 3560
10	4620 / 3210
9	4270 / 2860
8	3920 / 2510
7	3570 / 2160
6	3220 / 1810
5	2870 / 1460
4	2520 / 1110

CAUTION!
Do not confuse RWY32 with RWY28. Bright floodlight slightly N of APCH at D1.5 KLO. Expect turbulences on short final during south-westerly winds.

REMARK
Runway 28 is a non-instrument runway.

COR: ATIS ARR FREQ

THIS PAGE INTENTIONALLY LEFT BLANK