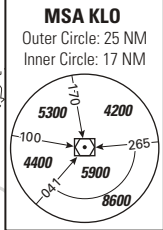
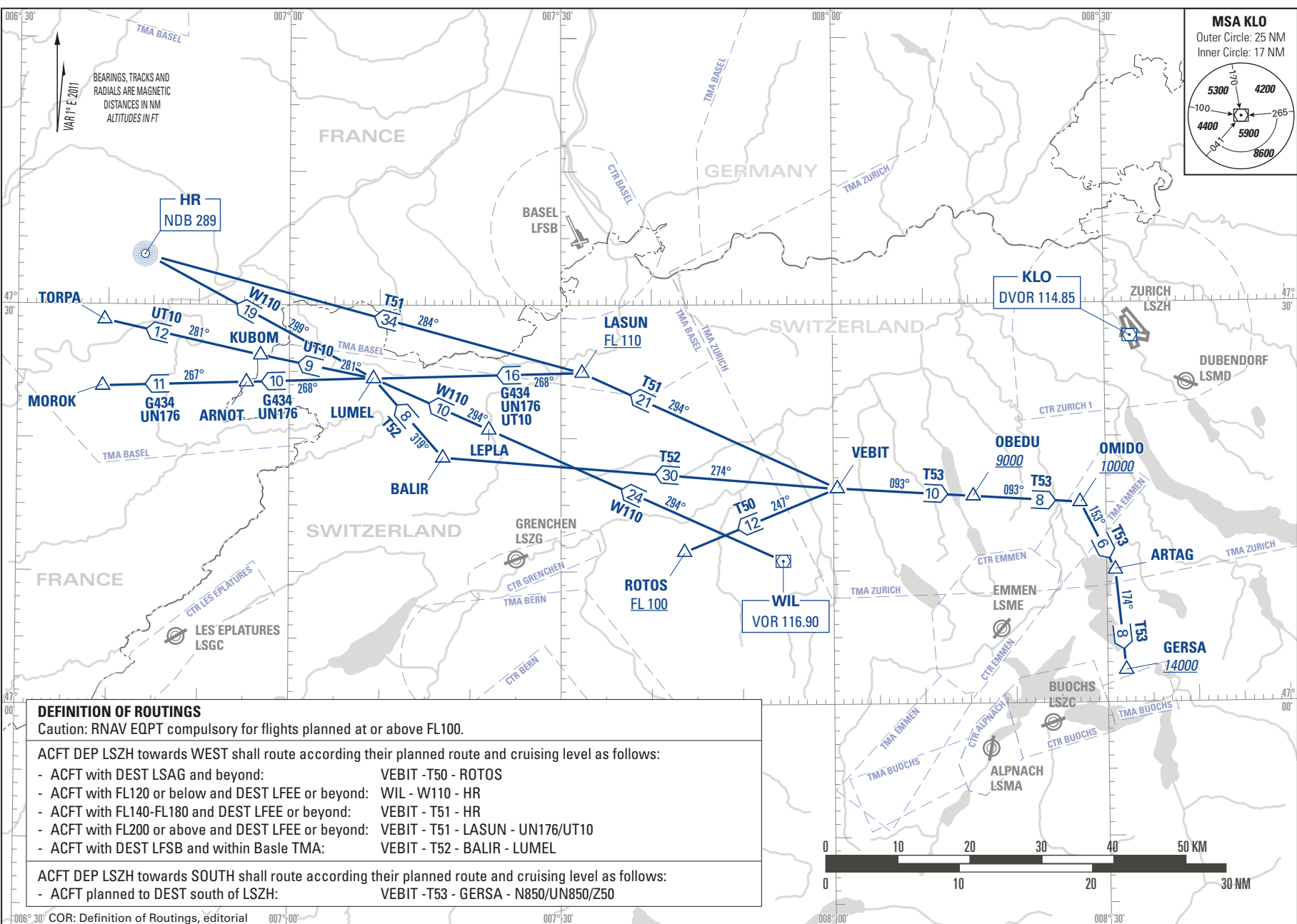


TRANSITION AFTER DEPARTURE ROUTES VEBIT

ZURICH



DEFINITION OF ROUTINGS
 Caution: RNAV EQPT compulsory for flights planned at or above FL100.

ACFT DEP LSZH towards WEST shall route according their planned route and cruising level as follows:	
- ACFT with DEST LSAG and beyond:	VEBIT -T50 - ROTOS
- ACFT with FL120 or below and DEST LFEE or beyond:	WIL - W110 - HR
- ACFT with FL140-FL180 and DEST LFEE or beyond:	VEBIT - T51 - HR
- ACFT with FL200 or above and DEST LFEE or beyond:	VEBIT - T51 - LASUN - UN176/UT10
- ACFT with DEST LFSB and within Basle TMA:	VEBIT - T52 - BALIR - LUMEL

ACFT DEP LSZH towards SOUTH shall route according their planned route and cruising level as follows:	
- ACFT planned to DEST south of LSZH:	VEBIT -T53 - GERSA - N850/UN850/Z50

THIS PAGE INTENTIONALLY LEFT BLANK