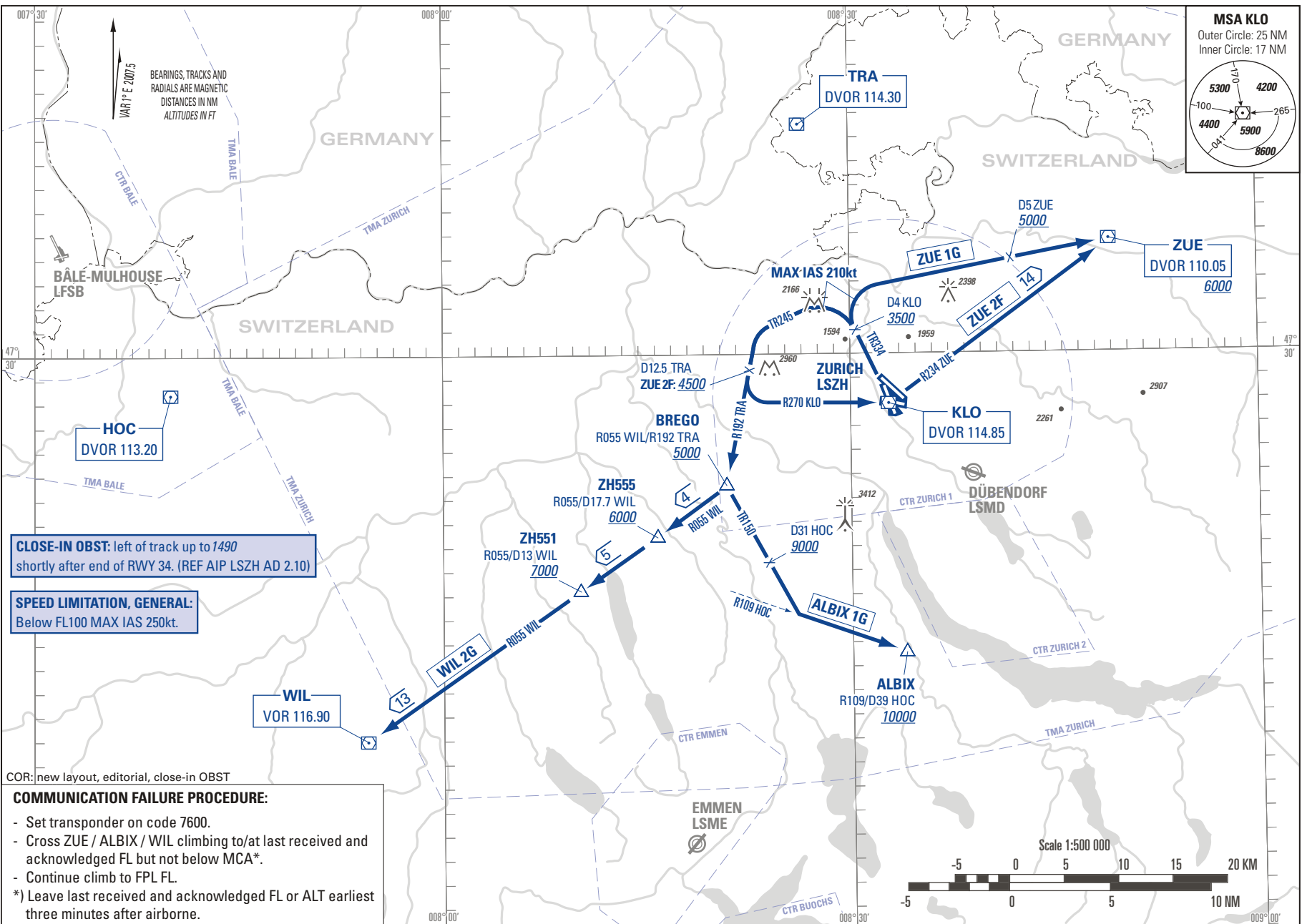
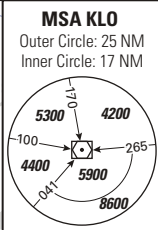


STANDARD INSTRUMENT DEPARTURE CHART  
(SID) - ICAO

TRANSITION LEVEL by ATC  
TRANSITION ALTITUDE 7000

ZÜRICH LSZH  
SID RWY 34 - NON RNAV



BEARINGS, TRACKS AND RADIALS ARE MAGNETIC DISTANCES IN NM ALTITUDES IN FT  
VAR 1° E 2001.5

**CLOSE-IN OBST:** left of track up to 1490 shortly after end of RWY 34. (REF AIP LSZH AD 2.10)

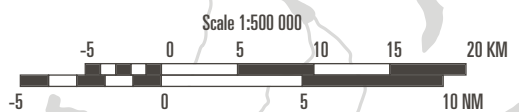
**SPEED LIMITATION, GENERAL:**  
Below FL100-MAX IAS 250kt.

COR: new layout, editorial, close-in OBST

**COMMUNICATION FAILURE PROCEDURE:**

- Set transponder on code 7600.
- Cross ZUE / ALBIX / WIL climbing to/at last received and acknowledged FL but not below MCA\*.
- Continue climb to FPL FL.

\* Leave last received and acknowledged FL or ALT earliest three minutes after airborne.



THIS PAGE INTENTIONALLY LEFT BLANK