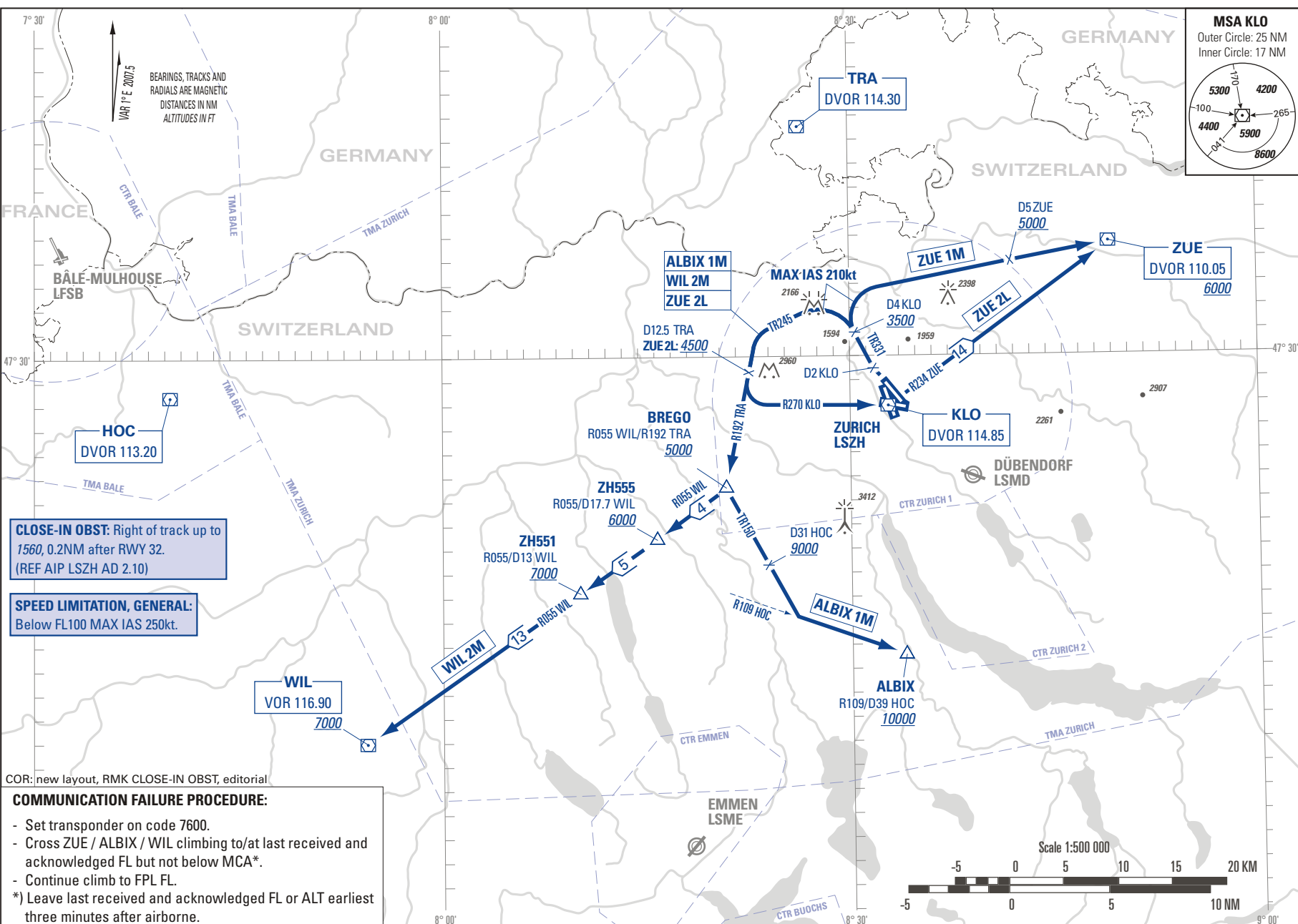
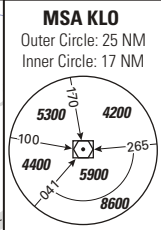


STANDARD INSTRUMENT DEPARTURE CHART
(SID) - ICAO

TRANSITION LEVEL by ATC
TRANSITION ALTITUDE 7000

ZÜRICH LSZH
SID RWY 32 - NON RNAV



BEARINGS, TRACKS AND RADIALS ARE MAGNETIC
DISTANCES IN NM
ALTITUDES IN FT

CLOSE-IN OBST: Right of track up to 1560, 0.2NM after RWY 32.
(REF AIP LSZH AD 2.10)

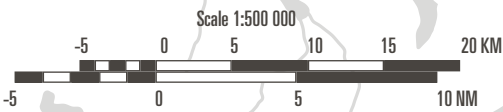
SPEED LIMITATION, GENERAL:
Below FL100 MAX IAS 250kt.

COR: new layout, RMK CLOSE-IN OBST, editorial

COMMUNICATION FAILURE PROCEDURE:

- Set transponder on code 7600.
- Cross ZUE / ALBIX / WIL climbing to/at last received and acknowledged FL but not below MCA*.
- Continue climb to FPL.

*) Leave last received and acknowledged FL or ALT earliest three minutes after airborne.



THIS PAGE INTENTIONALLY LEFT BLANK