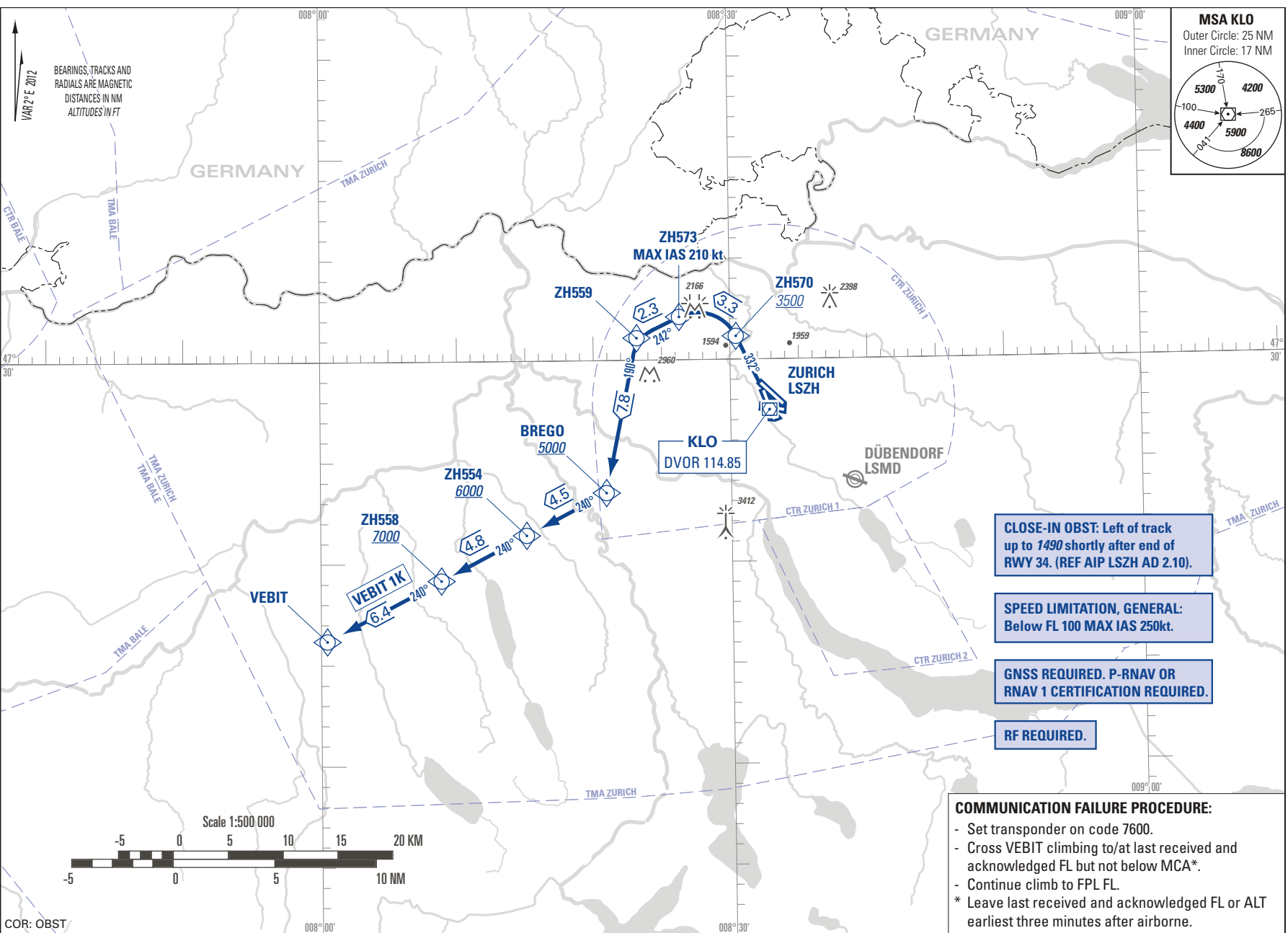
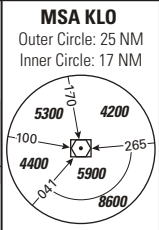


STANDARD INSTRUMENT DEPARTURE CHART
(SID) - ICAO

TRANSITION LEVEL by ATIS
TRANSITION ALTITUDE 7000

ZÜRICH LSZH
SID RWY 34 - RNAV 1



CLOSE-IN OBST: Left of track up to 1490 shortly after end of RWY 34. (REF AIP LSZH AD 2.10).

SPEED LIMITATION, GENERAL:
Below FL 100 MAX IAS 250kt.

GNSS REQUIRED. P-RNAV OR RNAV 1 CERTIFICATION REQUIRED.

RF REQUIRED.

COMMUNICATION FAILURE PROCEDURE:

- Set transponder on code 7600.
 - Cross VEBIT climbing to/at last received and acknowledged FL but not below MCA*.
 - Continue climb to FPL FL.
- * Leave last received and acknowledged FL or ALT earliest three minutes after airborne.

THIS PAGE INTENTIONALLY LEFT BLANK