

STANDARD DEPARTURE CHART -INSTRUMENT

RJAA / NARITA INTL

SID (E)

CHOSHI THREE DEPARTURE

RWY16R : Climb via NRE R-156 to 14DME,...

RWY16L : Climb via HKE R-156 to 15.4DME,...

....turn left to intercept and proceed via HME R-096(096DEG from HM NDB) to join OTR15 / to GUPPY.

Cross GUPPY at or above 10,000ft.

RWY34L : Climb via NRE R-336 to 6DME,...

RWY34R : Climb via HKE R-336 to 3.9DME,...

....turn right within NRE 10DME(RWY34L)/HKE 8.1DME(RWY34R), proceed via OJC R-012 to intercept and proceed via NRE R-137, then via HME R-096(096DEG from HM NDB) to join OTR15 / to GUPPY.

Cross NRE R-015(RWY34L)/HKE R-014(RWY34R) at or below 7,000ft, cross GUPPY at or above 10,000ft.

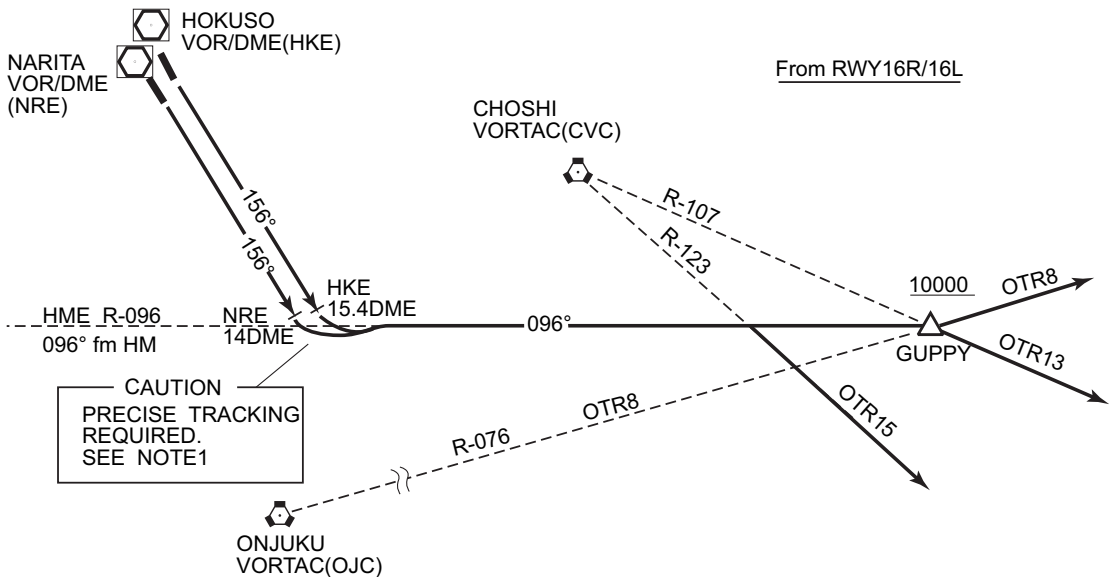
Note 1 : Aircraft taking off from RWY16R(RWY16L) should make left turn after passing NRE R-156/14DME (HKE R-156/15.4DME).

Note 2 : Aircraft unable to comply with the flight restrictions, inform NARITA DELIVERY for alternate procedure, when requesting ATC clearance.

Note 3 : When taking off from RWY34L/RWY16L, following climb gradient should be maintained until 630ft.

Speed (Knots)	60	90	120	150	180	210
Rate (Feet/Min)	300	450	600	750	900	1050

CHOSHI THREE DEPARTURE



STANDARD DEPARTURE CHART -INSTRUMENT

RJAA / NARITA INTL

SID (F)

