

STANDARD DEPARTURE CHART -INSTRUMENT

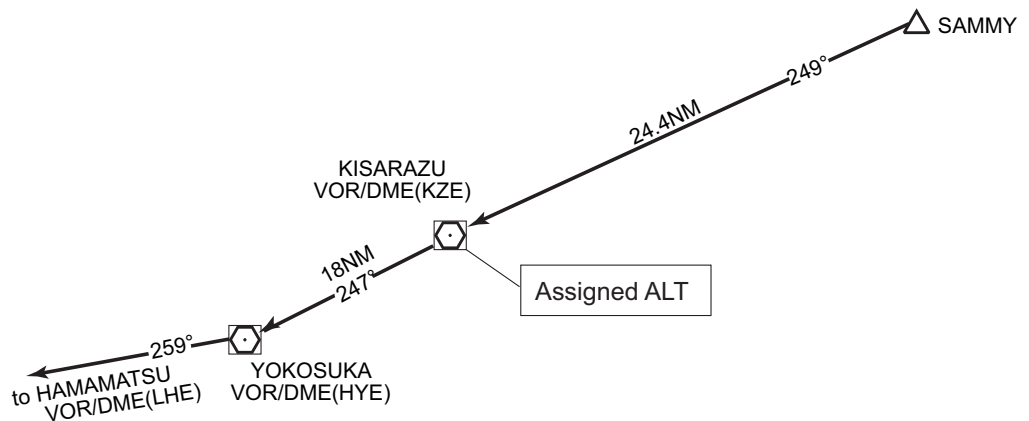
RJAA / NARITA INTL

TRANSITION (C)

KISARAZU TRANSITION

From over SAMMY, proceed via KZE R-069 to KZE VOR/DME, via KZE R-247 to HYE VOR/DME, then via HYE R-259 to LHE VOR/DME.
Cross KZE VOR/DME at assigned altitude.

KISARAZU TRANSITION



BAY TRANSITION

From over SAMMY, proceed via KZE R-069 to KZE VOR/DME, via KZE R-247 to HYE VOR/DME, then via HYE R-262 to XMC VORTAC.
Cross KZE VOR/DME at or above FL200.

BAY TRANSITION

