

INSTRUMENT APPROACH CHART

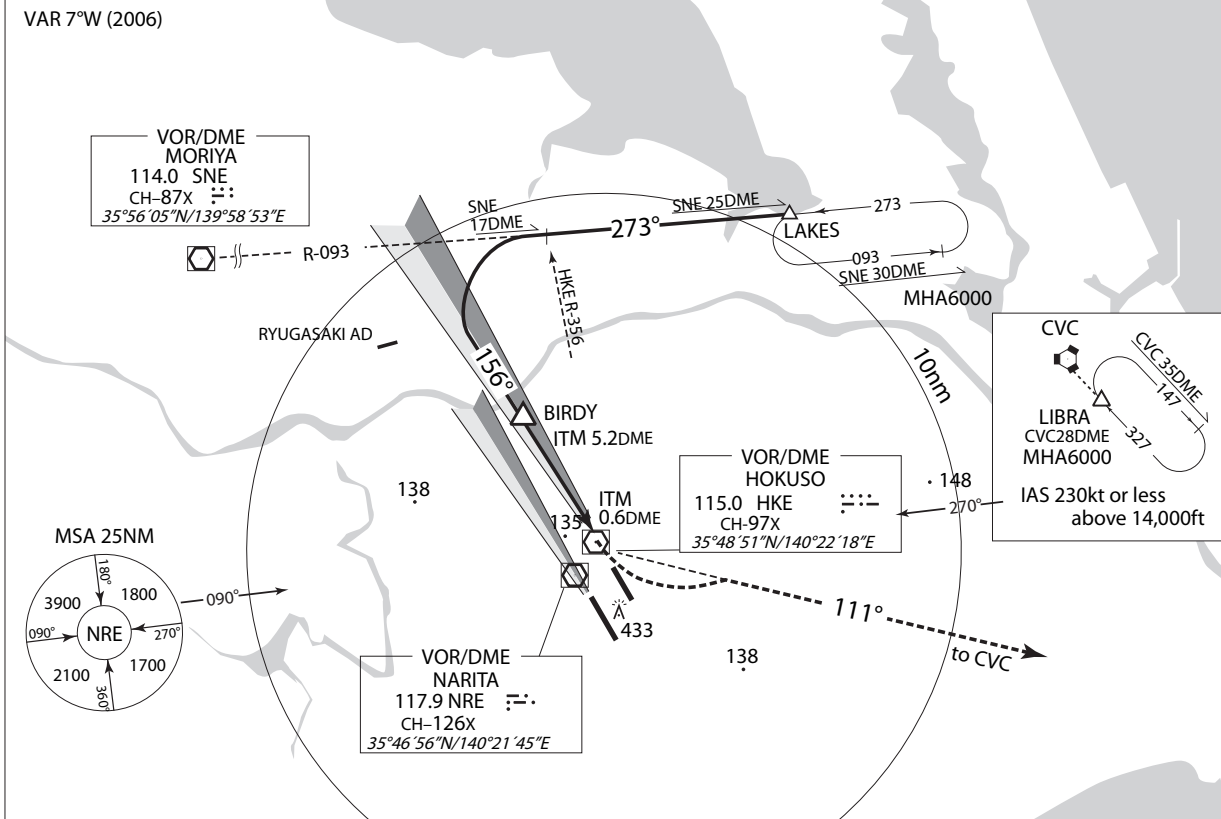
RJAA / NARITA INTL

ILS RWY16L

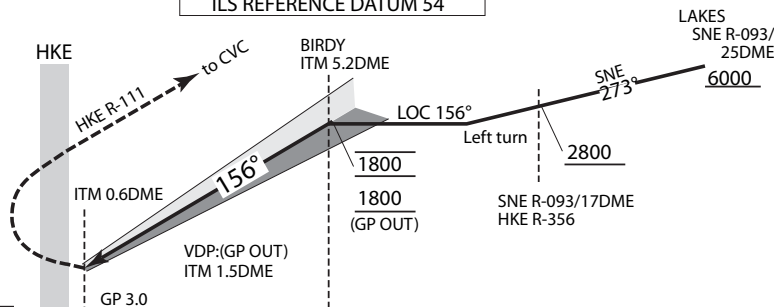
|                                 |  |   |                           |
|---------------------------------|--|---|---------------------------|
| NARITA APP<br>124.4-127.7-261.2 | ILS-LOC<br>110.7 ITM<br>ILS-GP 330.2<br>ILS-DME CH-44X | NARITA TWR<br>118.35-122.7-126.2<br>236.8-121.85G | RADAR AVBL<br>ATIS 128.25 |
|---------------------------------|--|---|---------------------------|

Simultaneous approach authorized with RWY16R

VAR 7°W (2006)



ILS REFERENCE DATUM 54'



MISSED APPROACH

At DA, turn left, climb via HKE R-111 to CVC VORTAC, then via CVC R-147 to LIBRA and hold at 6,000ft. Contact NARITA APP.

| MINIMA |           | THR elev. 135 |           | AD elev. 135 |           |      |
|--------|-----------|---------------|-----------|--------------|-----------|------|
| CAT    | CAT I     |               | LOC       |              | CIRCLING  |      |
|        | DA(H)     | RVR/CMV       | MDA(H)    | RVR/CMV      | MDA(H)    | VIS  |
| A      | 335 (200) | 700           | 580 (445) | 1200         | 740 (605) | 1600 |
| B      |           |               |           | 1300         |           |      |
| C      |           |               |           | 1400         |           |      |
| D/DL   |           |               |           | 1600         |           |      |
|        |           |               |           |              |           | 2400 |
|        |           |               |           |              |           | 3200 |