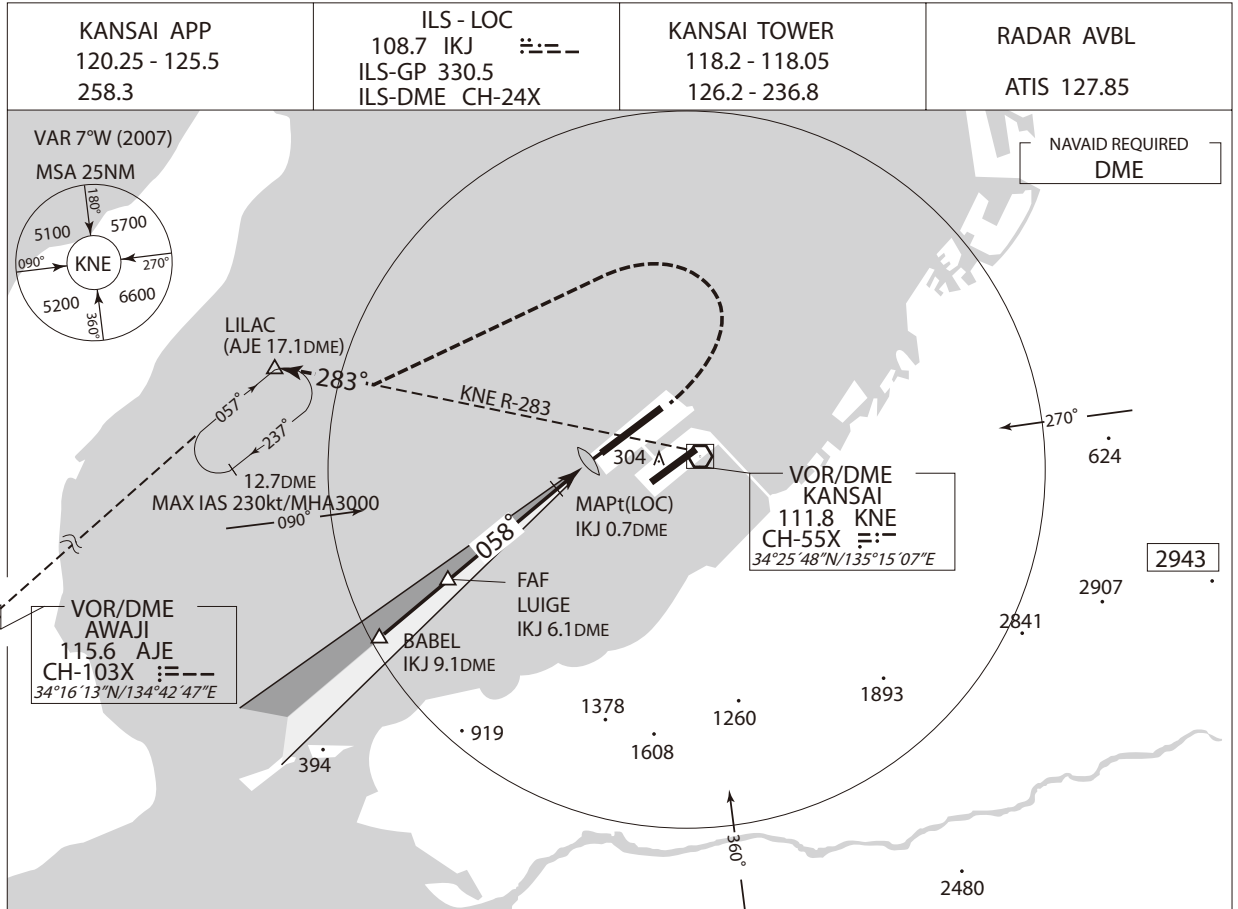


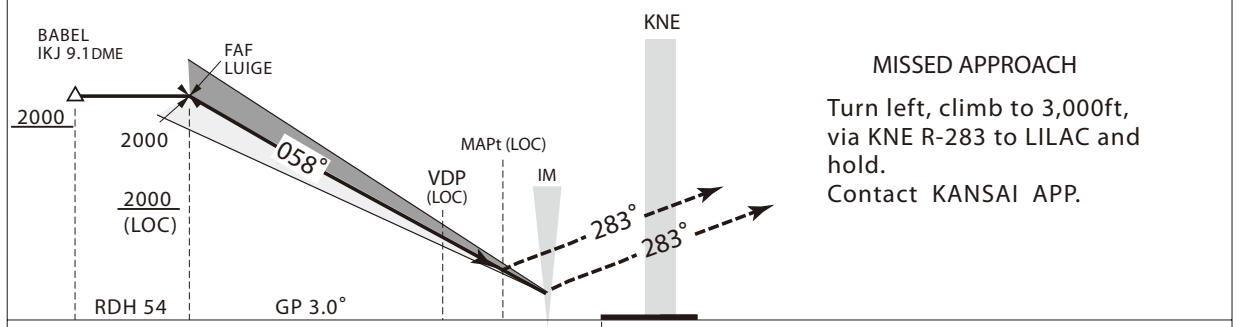
INSTRUMENT APPROACH CHART

RJBB / KANSAI INTL

ILS Z or LOC Z RWY 06L CAT II



NM to IKJ	FAF	5	4	3	2	MAPt
ALT(3.0° APCH Path)	-	1619	1301	982	664	-



DME to IKJ	6.1	0.9	0.7	0.3	
NM to RWY06L	5.9	0.7	0.5	0.1	0

MINIMA			THR elev. 28		AD elev. 17				
CAT	CAT II			CAT I		LOC		CIRCLING	
	DA(H)	RA	RVR	DA(H)	RVR/CMV	MDA(H)	RVR/CMV	MDA(H)	VIS
A	128 (100)	100	350	228 (200)	550	280 (263)	800	610 (593)	1600
B									2400
C									2400
D/DL							1200		3200

Circling to North side of RWY only.
DH150 (DA178)-RA178 for the operators on operational evaluation phases prior to CAT II operations.