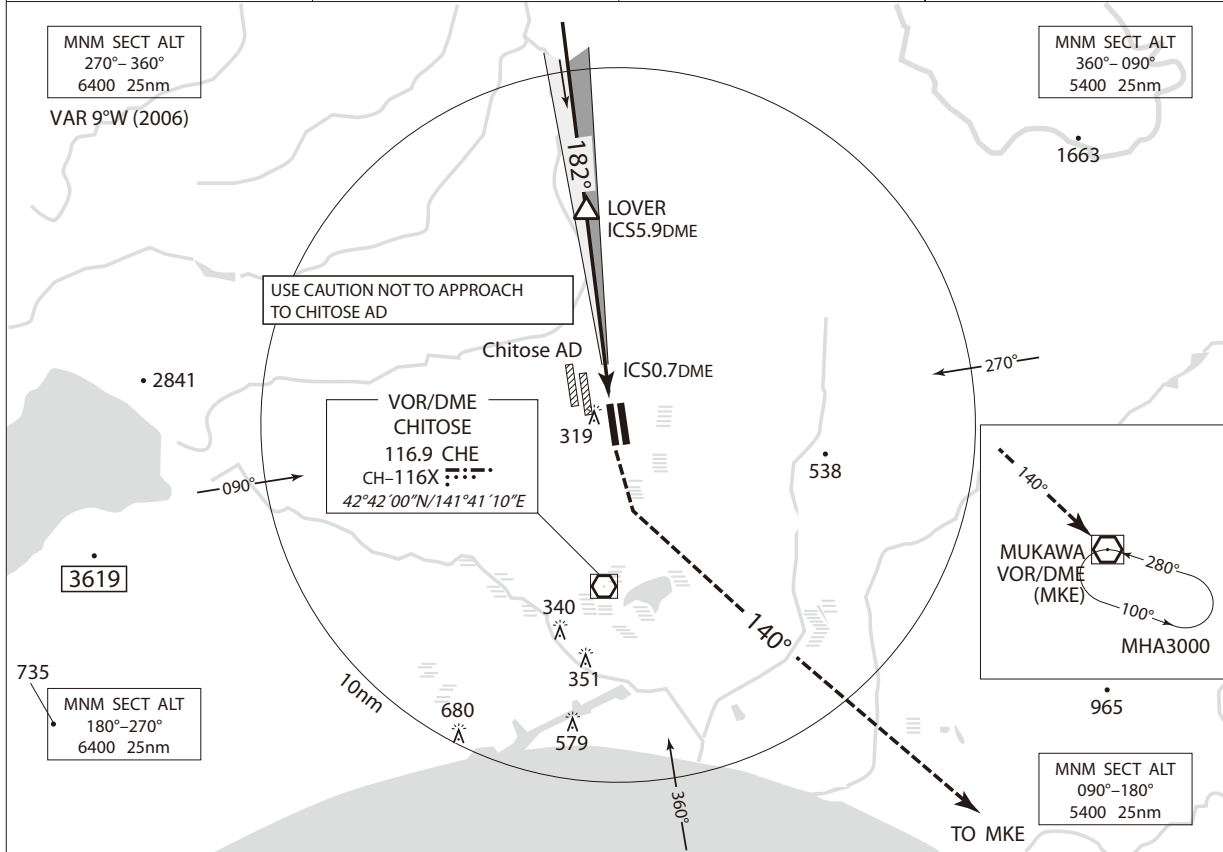


INSTRUMENT APPROACH CHART

RJCC / NEW CHITOSE

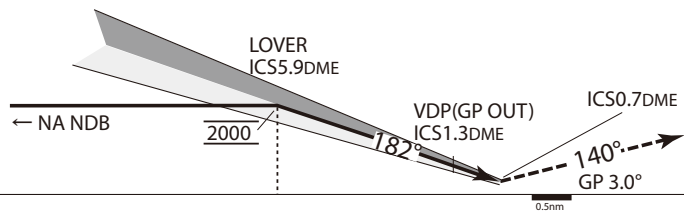
ILS NR.5 RWY 19R

CHITOSE APP 120.1 – 124.7	ILS-LOC 111.5 ICS $\ddot{::}-\cdot$ ILS-GP 332.9	CHITOSE TOWER 118.8 – 126.2 – 121.6G	RADAR AVAILABLE ATIS 128.6
------------------------------	--	---	-------------------------------



ILS REFERENCE DATUM 54°

**MISSED APPROACH**  
At DA, climb to 500' on 182°, then turn left climb via MKE R-320 to 5000', proceed to MKE VOR/DME and hold. Contact CHITOSE APP.



MINIMA		THR elev. 82		AD elev. 70		
CAT	CAT I		LOC		CIRCLING	
	DA(H)	RVR/CMV	MDA(H)	RVR/CMV	MDA(H)	VIS
A	282 (200)	550	500 (430)	900	580 (510)	1600
B				1000		
C				1400	640 (570)	3200
D						

Circling to East side of RWY only.