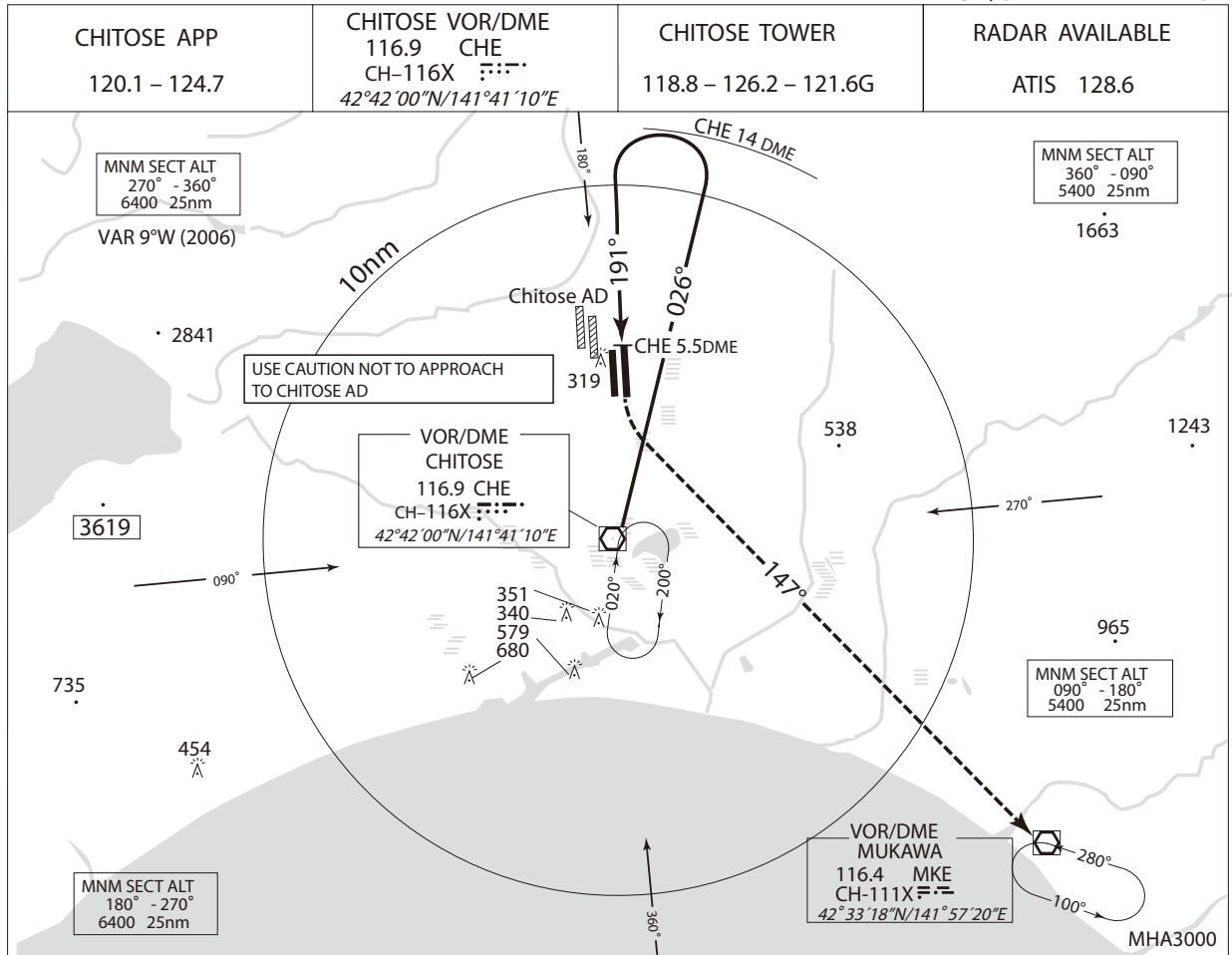


INSTRUMENT APPROACH CHART

RJCC / NEW CHITOSE

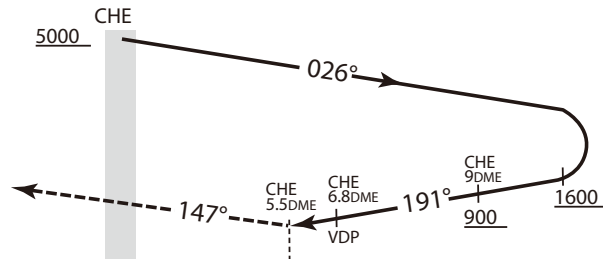
VOR/DME NR 1 RWY 19L



**MISSED APPROACH**

At 5.5DME prior to CHE VOR/DME, turn left climb via MKE R-327 to 5000', proceed to MKE VOR/DME and hold. Contact CHITOSE APP.

Remain within CHE 14DME



MINIMA		THR elev. 77	AD elev. 70	
CAT			CIRCLING	
	MDA(H)	CMV	MDA(H)	VIS
A	620 (550)	1400	620 (550)	1600
B		1500		2400
C		1600		3200
D		1800		

Circling to East side of RWY only.