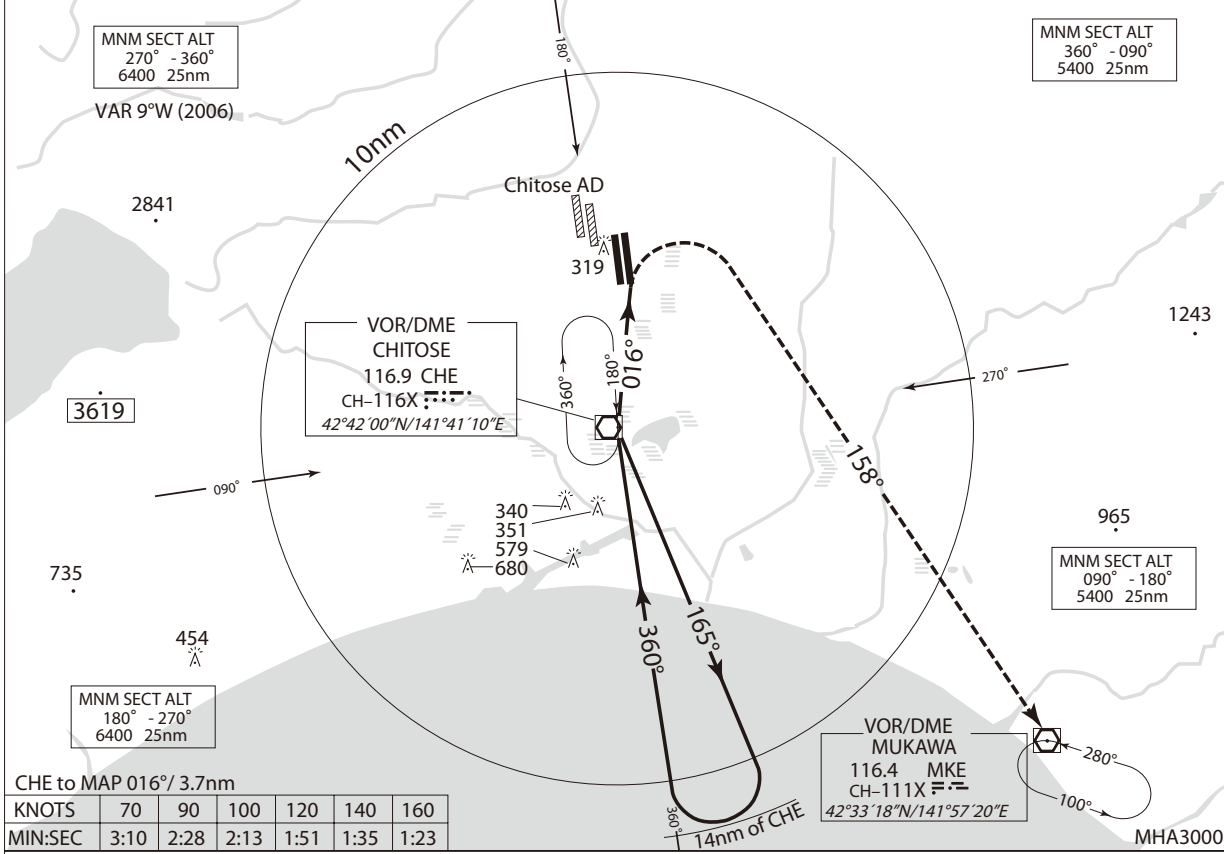


INSTRUMENT APPROACH CHART

RJCC / NEW CHITOSE

VOR RWY 01R

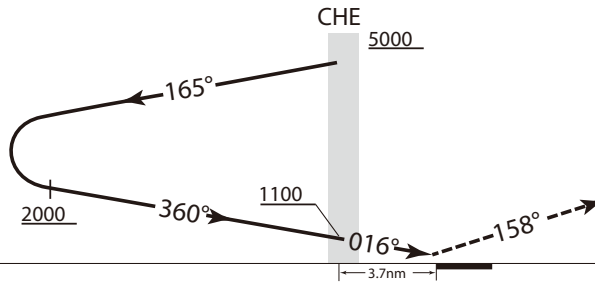
CHITOSE APP 120.1 - 124.7	CHITOSE VOR/DME 116.9 CHE CH-116X 42°42'00"N/141°41'10"E	CHITOSE TOWER 118.8 - 126.2 - 121.6G	RADAR AVAILABLE ATIS 128.6
------------------------------	---	---	-------------------------------



CHE to MAP 016°/ 3.7nm

KNOTS	70	90	100	120	140	160
MIN:SEC	3:10	2:28	2:13	1:51	1:35	1:23

Remain within 14nm of CHE



MISSED APPROACH

At 3.7nm after passing CHE VOR, turn right, climb via MKE R-338 to 5000', proceed to MKE VOR/DME and hold.
Contact CHITOSE APP.

MINIMA	THR elev. 57		AD elev. 70	
CAT	CIRCLING		CIRCLING	
	MDA(H)	RVR/CMV	MDA(H)	VIS
A	600 (543)	1000	600 (530)	1600
B		1200		
C			2400	
D			1600	3200

Circling to East side of RWY only.