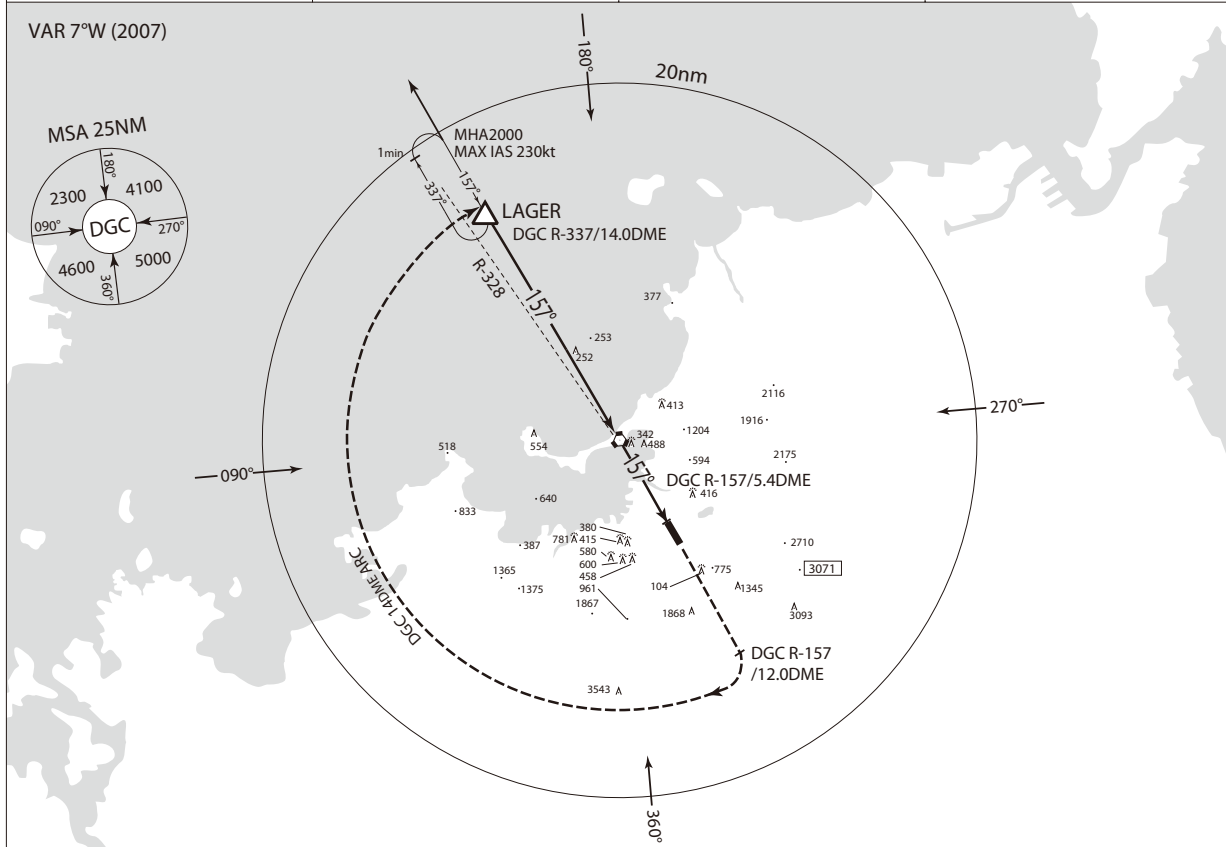


INSTRUMENT APPROACH CHART

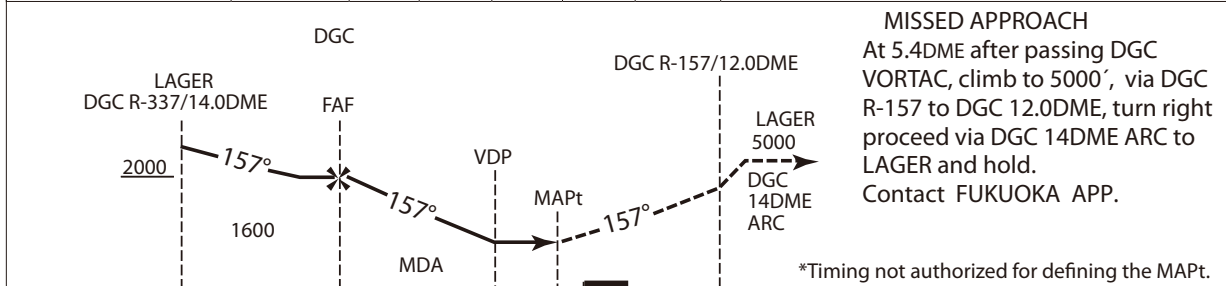
RJFF / FUKUOKA

TACAN RWY 16

FUKUOKA APP 119.1 – 119.65 – 120.7 261.2 – 270.8	FUKUOKA VORTAC 114.5 DGC CH-92X $\equiv \equiv \equiv$ 33°40'34"N / 130°23'23"E	FUKUOKA TOWER 118.4 – 126.2 236.8	RADAR AVAILABLE ATIS 127.2
--	--	---	-------------------------------



NM to RWY16	FAF(DGC)	5	4	3	2	MAPt
ALT(3.0° APCH Path)	1750	1656	1338	1019	701	-



NM TO RWY16	19.5	5.5	1.9	0.1	0
DME FROM DGC	14.0	0.0	3.5	5.4	

Missed Apch climb gradient min 5.0%.

CAT	MINIMA		AD elev. 30	
	MDA(H)	RVR/CMV	MDA(H)	VIS
A	630 (615)	1000	830 (800)	1600
B		1200		
C			1020 (990)	2400
D		1600	1030 (1000)	3200

Circling to West side of RWY only.
*MINIMA with Missed APCH climb gradient of 2.5% are not established.