

STANDARD ARRIVAL CHART -INSTRUMENT

RJGG / CHUBU CENTRAIR

STAR

NORTH ARC ARRIVAL

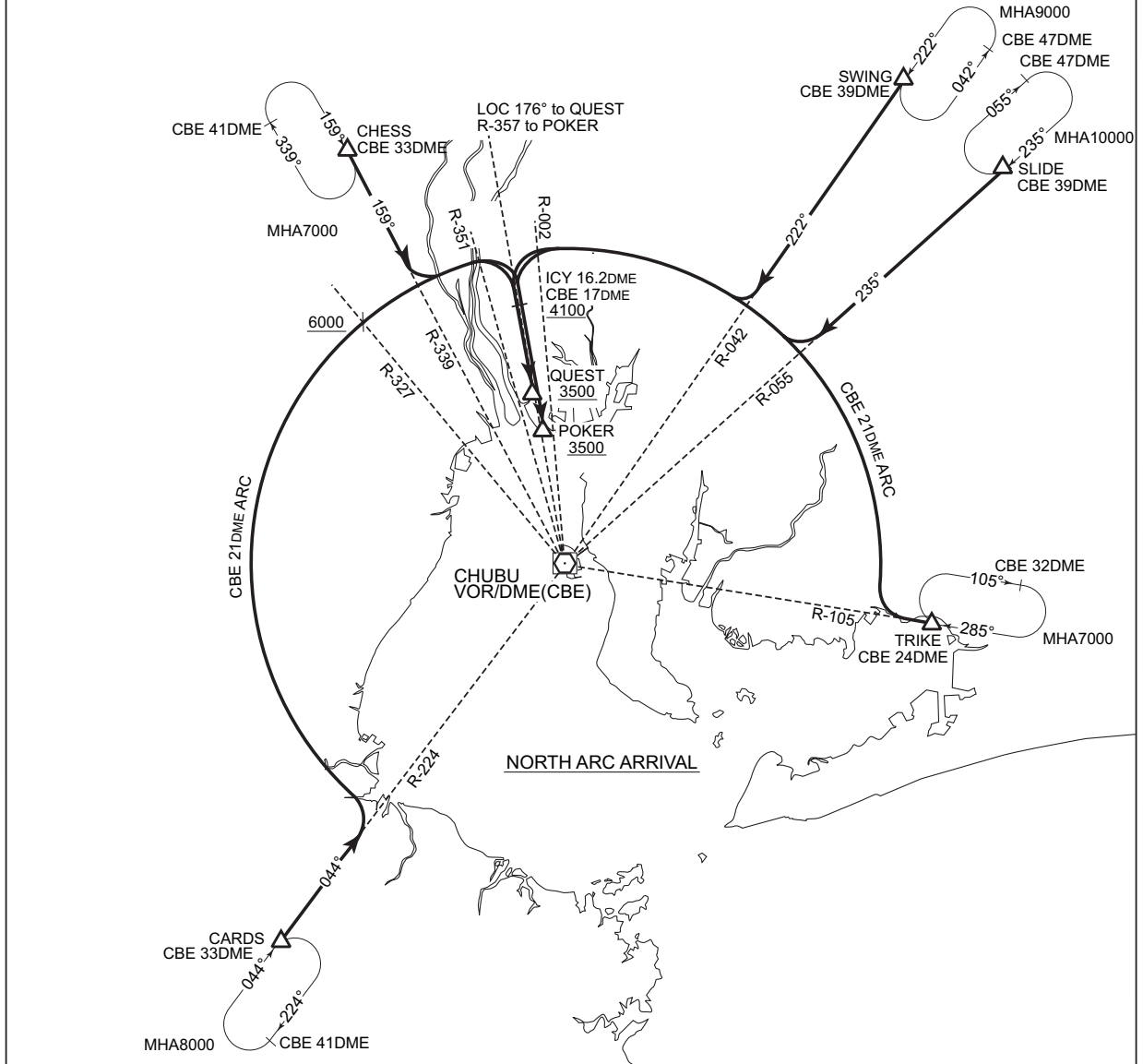
From over CARDS, proceed via CBE R-224, turn left via CBE 21DME clockwise ARC, then turn right....
 From over CHESS, proceed via CBE R-339, turn left via CBE 21DME clockwise ARC, then turn right....
 From over SWING, proceed via CBE R-042, turn right via CBE 21DME counterclockwise ARC, then turn left....
 From over SLIDE, proceed via CBE R-055, turn right via CBE 21DME counterclockwise ARC, then turn left....
 From over TRIKE, turn right via CBE 21DME counterclockwise ARC, then turn left....

for ILS Z RWY18 and LOC Z RWY18 :

.... to intercept and proceed via ICY-LOC to QUEST.
 Cross CBE R-327 at or above 6,000ft.(when started from CARDS)
 Cross ICY 16.2DME at or above 4,100ft, cross QUEST at or above 3,500ft.

for VOR RWY18 :

.... to intercept and proceed via CBE R-357 to POKER.
 Cross CBE R-327 at or above 6,000ft.(when started from CARDS)
 Cross CBE R-357/17DME at or above 4,100ft, cross POKER at or above 3,500ft.



INTENTIONALLY LEFT BLANK