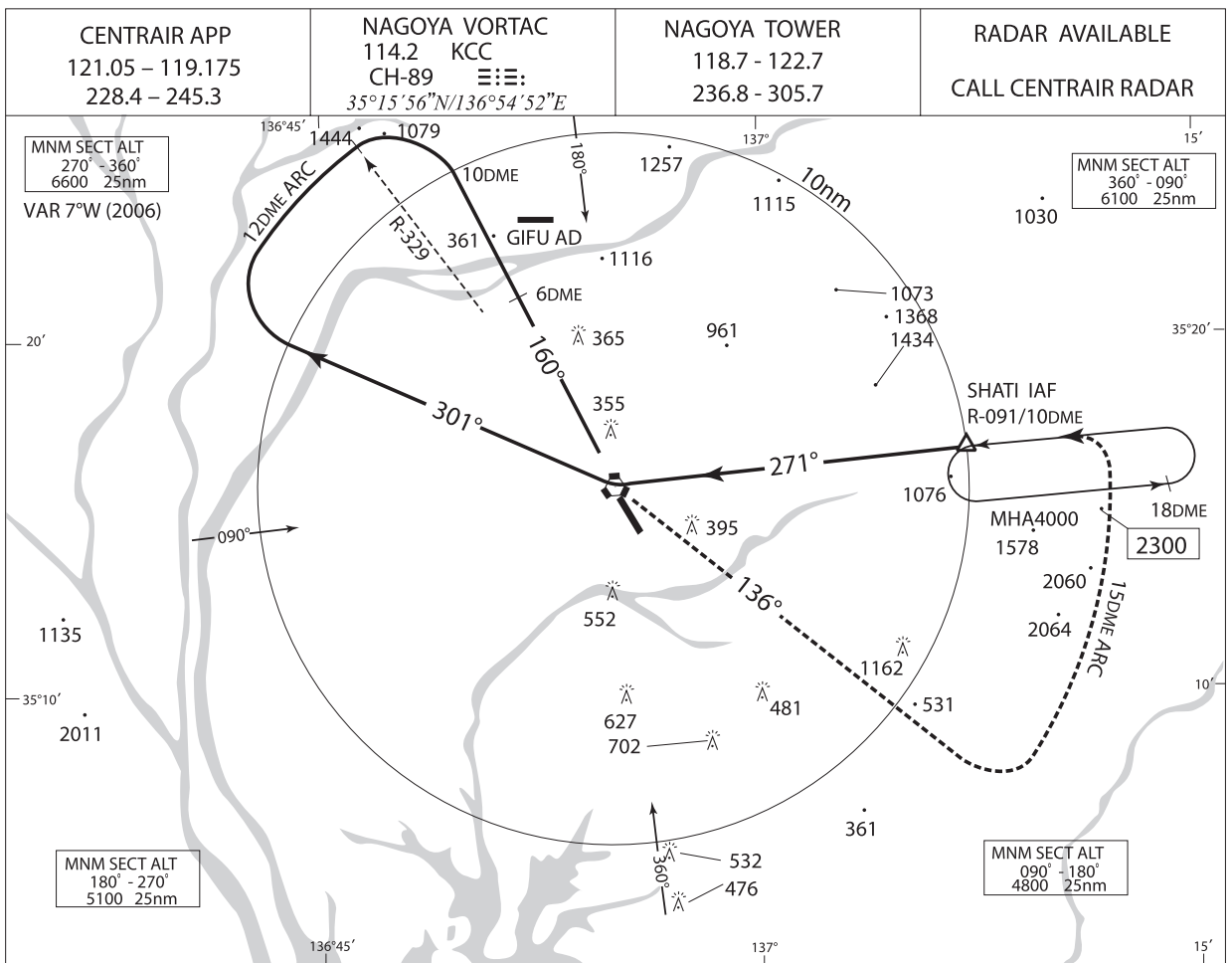
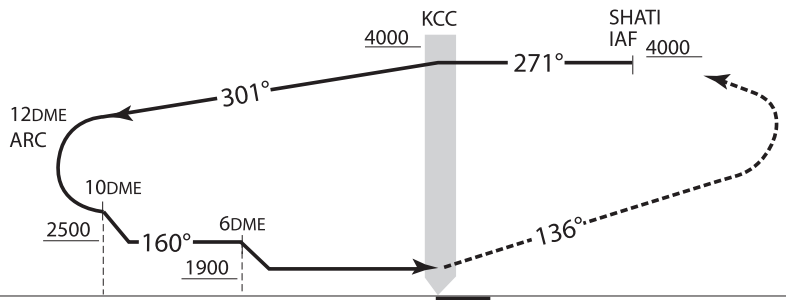


INSTRUMENT APPROACH CHART-7



**MISSED APPROACH**

At KCC VORTAC, turn left climb to 4000', via KCC R-136 to intercept and proceed via KCC 15DME CCW ARC then turn left to intercept and proceed via KCC R-091 to SHATI and hold. Contact CENTRAIR APP.



| MINIMA |           | AD elev. 46 |
|--------|-----------|-------------|
| CAT    | CIRCLING  |             |
|        | MDA(H)    | VIS         |
| A      | 660 (614) | 1600        |
| B      | 680 (634) | 2400        |
| C      | 700 (654) | 3200        |

Circling to East side of RWY only