

CARTA DE CHEGADA PADRÃO
POR INSTRUMENTOS (STAR)

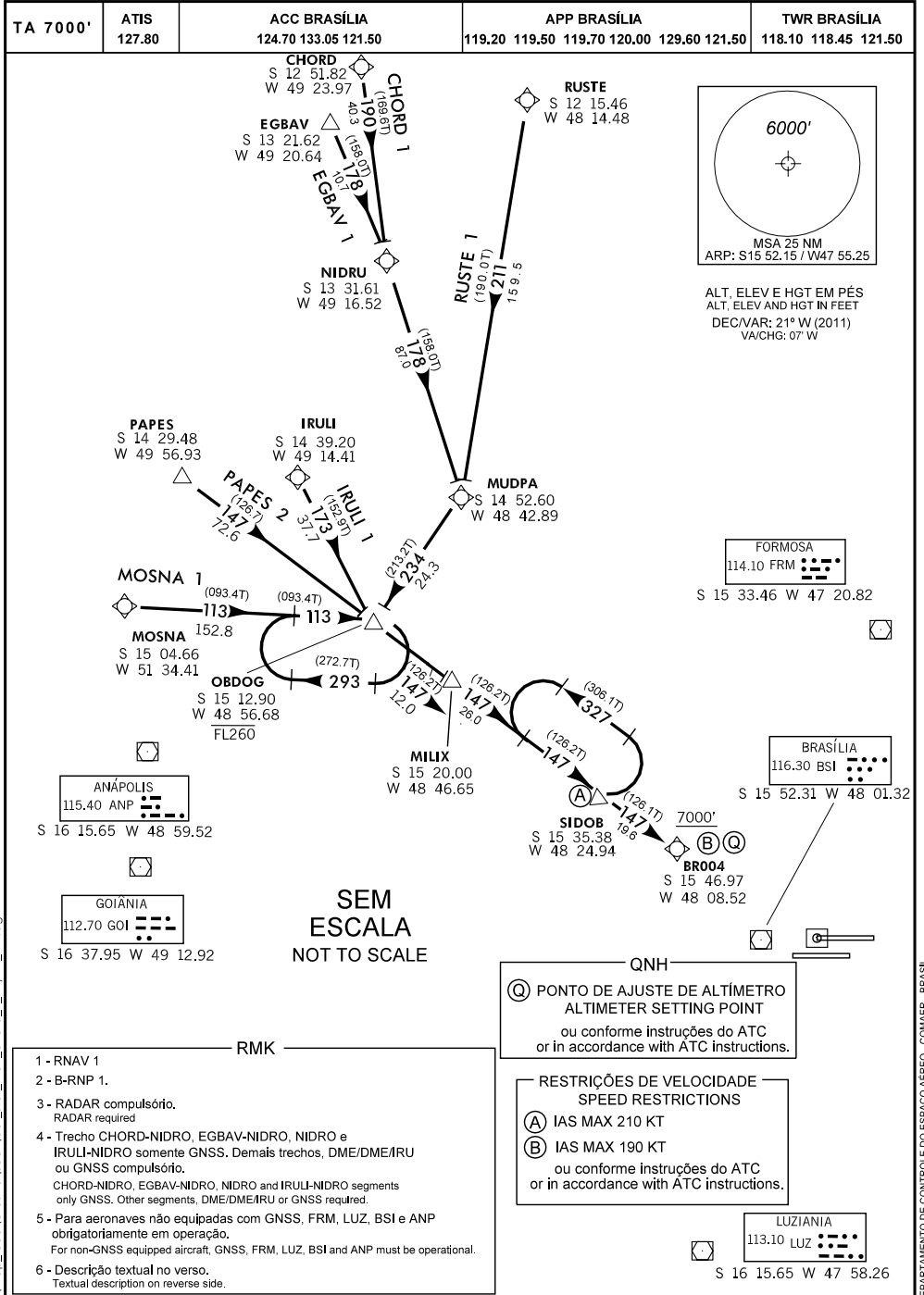
BRASÍLIA / PRES. JUSCELINO KUBITSCHKE, INTL (SBBR)

RWY 11L/11R

STANDARD ARRIVAL CHART
INSTRUMENT (STAR)

RNAV CHORD 1 - EGBAV 1 - IRULI 1

MOSNA 1 - PAPES 2 - RUSTE 1



z:\mapa\lcoo\brasil\lcoo\star_max_chord_1_rwy11l1r.dgn

DEPARTAMENTO DE CONTROLE DO ESPAÇO AEREO - COMAER - BRASIL

17 OCT 13 AIRAC

MODIFICAÇÕES / CHANGES: CARTA NOVA / NEW CHART.

SBBR - RWY 11L/11R

STAR RNAV CHORD 1 - EGBAV 1 - IRULI 1 - MOSNA 1 - PAPES 2 - RUSTE 1

————— DESCRIÇÃO TEXTUAL DA CHEGADA —————

I - CHEGADA CHORD 1:

APÓS WAYPOINT FLY-BY CHORD, VOAR (TF) NO RUMO 190 POR 40,3 NM PARA A INTERSEÇÃO FLY-BY NIDRU, CURVAR À ESQUERDA (TF) RUMO 178, VOAR 87,0 NM PARA O WAYPOINT FLY-BY MUDPA, CURVAR À DIREITA (TF) RUMO 234, VOAR 24,3 NM, CRUZAR A INTERSEÇÃO FLY-BY OBDOG NO FL260 OU ABAIXO, CURVAR À ESQUERDA (TF) RUMO 147, VOAR 12,0 NM PARA A INTERSEÇÃO FLY-BY MILIX, MANTER (TF) RUMO 147, VOAR 26,0 NM PARA A INTERSEÇÃO FLY-BY SIDOB, MANTER (TF) RUMO 147, VOAR 19,6 NM PARA O WAYPOINT FLY-BY BR004.

II - CHEGADA EGBAV 1:

APÓS INTERSEÇÃO FLY-BY EGBAV, VOAR (TF) NO RUMO 178 POR 10,7 NM PARA A INTERSEÇÃO FLY-BY NIDRU, MANTER (TF) RUMO 178, VOAR 87,0 NM PARA WAYPOINT FLY - BY MUDPA, CURVAR À DIREITA (TF) RUMO 234, VOAR 24,3 NM, CRUZAR A INTERSEÇÃO FLY-BY OBDOG NO FL260 OU ABAIXO, CURVAR À ESQUERDA (TF) RUMO 147, VOAR 12,0 NM PARA A INTERSEÇÃO FLY-BY MILIX, MANTER (TF) RUMO 147, VOAR 26,0 NM PARA A INTERSEÇÃO FLY-BY SIDOB, MANTER (TF) RUMO 147, VOAR 19,6 NM PARA O WAYPOINT FLY-BY BR004.

III - CHEGADA IRULI 1:

APÓS WAYPOINT FLY-BY IRULI, VOAR (TF) NO RUMO 173 POR 37,7 NM, CRUZAR A INTERSEÇÃO FLY-BY OBDOG NO FL260 OU ABAIXO, CURVAR À ESQUERDA (TF) RUMO 147, VOAR 12,0 NM PARA A INTERSEÇÃO FLY-BY MILIX, MANTER (TF) O RUMO 147, VOAR 26,0 NM PARA A INTERSEÇÃO FLY-BY SIDOB, MANTER (TF) O RUMO 147, VOAR 19,6 NM PARA WAYPOINT FLY-BY BR004.

IV - CHEGADA MOSNA 1:

APÓS WAYPOINT FLY-BY MOSNA, VOAR (TF) NO RUMO 113 POR 152,8 NM, CRUZAR A INTERSEÇÃO FLY-BY OBDOG NO FL260 OU ABAIXO, CURVAR À DIREITA (TF) RUMO 147, VOAR 12,0 NM PARA A INTERSEÇÃO FLY-BY MILIX, MANTER (TF) O RUMO 147, VOAR 26,0 NM PARA A INTERSEÇÃO FLY -BY SIDOB, MANTER (TF) RUMO 147, VOAR 19,6 NM PARA WAYPOINT FLY-BY BR004.

V - CHEGADA PAPES 2:

APÓS INTERSEÇÃO FLY-BY PAPES, VOAR (TF) NO RUMO 147 POR 72,6 NM, CRUZAR A INTERSEÇÃO FLY-BY OBDOG NO FL260 OU ABAIXO, MANTER (TF) O RUMO 147, VOAR 12,0 NM PARA A INTERSEÇÃO FLY-BY MILIX, MANTER (TF) O RUMO 147, VOAR 26,0 NM PARA A INTERSEÇÃO FLY-BY SIDOB, MANTER (TF) O RUMO 147, VOAR 19,6 NM PARA O WAYPOINT FLY-BY BR004.

VI - CHEGADA RUSTE 1:

APÓS INTERSEÇÃO FLY-BY RUSTE, VOAR (TF) NO RUMO 211 POR 159,5 NM PARA O WAYPOINT FLY-BY MUDPA, CURVAR À DIREITA (TF) RUMO 234, VOAR 24,3 NM, CRUZAR A INTERSEÇÃO FLY-BY OBDOG NO FL260 OU ABAIXO, CURVAR À ESQUERDA (TF) RUMO 147, VOAR 12,0 NM PARA A INTERSEÇÃO FLY-BY MILIX, MANTER (TF) RUMO 147, VOAR 26,0 NM PARA A INTERSEÇÃO FLY-BY SIDOB, MANTER (TF) RUMO 147, VOAR 19,6 NM PARA O WAYPOINT FLY-BY BR004.

————— ARRIVAL TEXTUAL DESCRIPTION —————

I - CHORD 1 ARRIVAL:

AFTER WAYPOINT FLY-BY CHORD, FLY (TF) ON COURSE 190 VIA 40,3 NM TO INTERSECTION FLY-BY NIDRU, TURN LEFT (TF) COURSE 178, FLY 87,0 NM TOWAYPOINT FLY-BY MUDPA, TURN RIGHT (TF) COURSE 234, FLY 24,3 NM, PASS INTERSECTION FLY-BY OBDOG AT OR BELOW FL260, TURN LEFT (TF) COURSE 147, FLY 12,0 NM TO INTERSECTION FLY-BY MILIX, MAINTAIN (TF) COURSE 147, FLY 26,0 NM TO INTERSECTION FLY-BY SIDOB, MAINTAIN (TF) COURSE 147, FLY 19,6 NM TO WAYPOINT FLY-BY BR004.

II - EGBAV 1 ARRIVAL:

AFTER INTERSECTION FLY-BY EGBAV, FLY (TF) ON COURSE 178 VIA 10,7 NM TO INTERSECTION FLY-BY NIDRU, MAINTAIN (TF) COURSE 178, FLY 87,0 NM TO WAYPOINT FLY-BY MUDPA, TURN RIGHT (TF) COURSE 234, FLY 24,3 NM, PASS INTERSECTION FLY-BY OBDOG AT OR BELOW FL260, TURN LEFT (TF) COURSE 147, FLY 12,0 NM TO INTERSECTION FLY-BY MILIX, MAINTAIN (TF) COURSE 147, FLY 26,0 NM TO INTERSECTION FLY-BY SIDOB, MAINTAIN (TF) COURSE 147, FLY 19,6 NM TO WAYPOINT FLY-BY BR004.

III - IRULI 1 ARRIVAL:

AFTER WAYPOINT FLY-BY IRULI, FLY (TF) ON COURSE 173 VIA 37,7 NM, PASS INTERSECTION FLY-BY OBDOG AT OR BELOW FL260, TURN LEFT (TF) COURSE 147, FLY 12,0 NM TO INTERSECTION FLY-BY MILIX, MAINTAIN (TF) COURSE 147, FLY 26,0 NM TO INTERSECTION FLY-BY SIDOB, MAINTAIN (TF) COURSE 147, FLY 19,6 NM TO WAYPOINT FLY-BY BR004.

IV - MOSNA 1 ARRIVAL:

AFTER WAYPOINT FLY-BY MOSNA, FLY (TF) ON COURSE 113 VIA 152,8 NM, PASS INTERSECTION FLY-BY OBDOG AT OR BELOW FL260, TURN RIGHT (TF) COURSE 147, FLY 12,0 NM TO INTERSECTION FLY-BY MILIX, MAINTAIN (TF) COURSE 147, FLY 26,0 NM TO INTERSECTION FLY-BY SIDOB, MAINTAIN (TF) COURSE 147, FLY 19,6 NM TO WAYPOINT FLY-BY BR004.

V - PAPES 2 ARRIVAL:

AFTER INTERSECTION FLY-BY PAPES, FLY (TF) ON COURSE 147 VIA 72,6 NM, PASS INTERSECTION FLY-BY OBDOG AT OR BELOW FL260, MAINTAIN (TF) COURSE 147, FLY 12,0 NM TO INTERSECTION FLY-BY MILIX, MAINTAIN (TF) COURSE 147, FLY 26,0 NM TO INTERSECTION FLY-BY SIDOB, MAINTAIN (TF) COURSE 147, FLY 19,6 NM TO WAYPOINT FLY-BY BR004.

VI - RUSTE 1 ARRIVAL:

AFTER WAYPOINT FLY-BY RUSTE, FLY (TF) ON COURSE 211 VIA 159,5 NM TO WAYPOINT FLY-BY MUDPA, TURN RIGHT (TF) COURSE 234, FLY 24,3 NM, PASS INTERSECTION FLY-BY OBDOG AT OR BELOW FL260, TURN LEFT (TF) COURSE 147, FLY 12,0 NM TO INTERSECTION FLY-BY MILIX, MAINTAIN (TF) COURSE 147, FLY 26,0 NM TO INTERSECTION FLY-BY SIDOB, MAINTAIN (TF) COURSE 147, FLY 19,6 NM TO WAYPOINT FLY-BY BR004.