

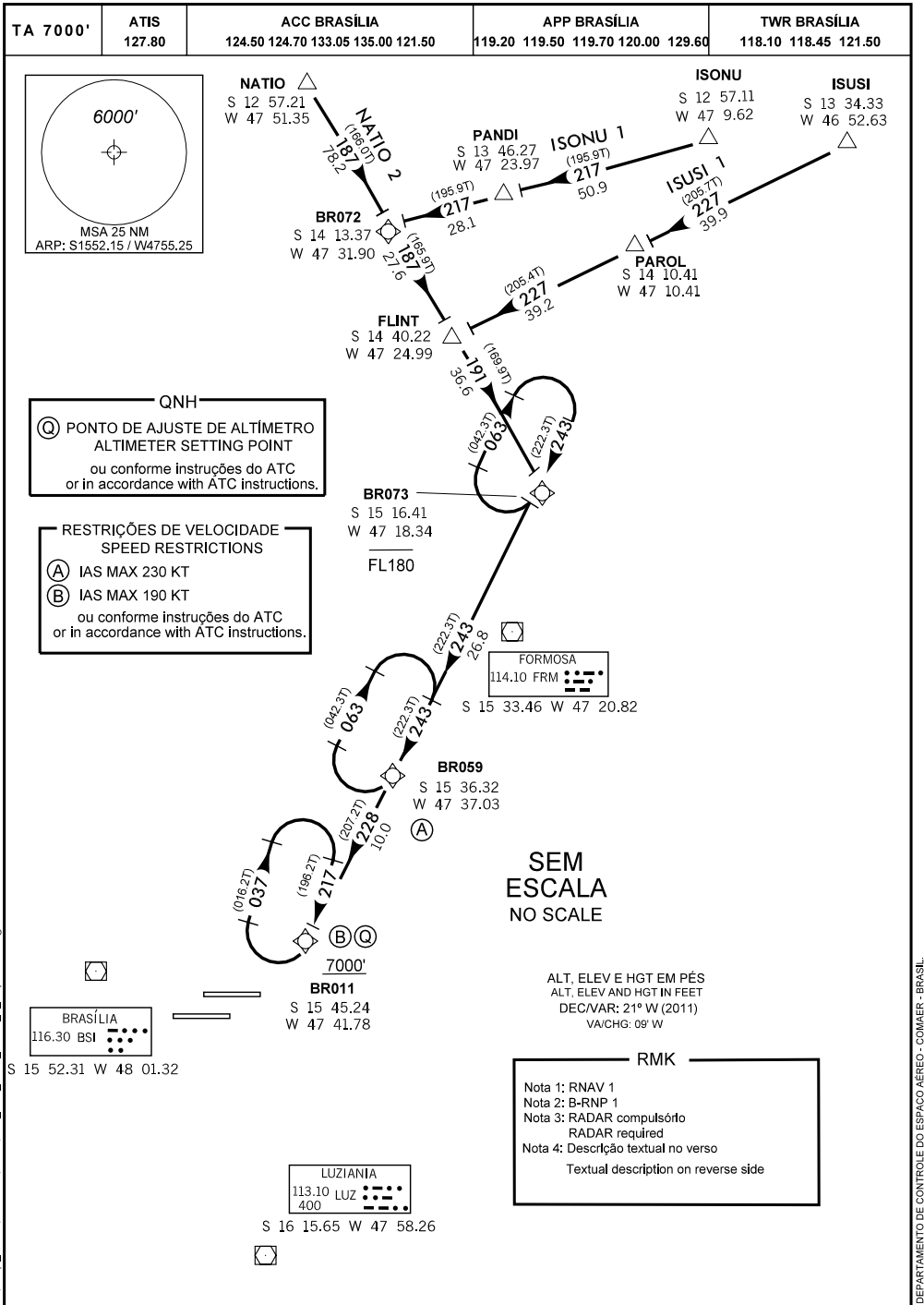
CARTA DE CHEGADA PADRÃO  
POR INSTRUMENTOS (STAR)

**BRASÍLIA / PRES. JUSCELINO KUBITSCHKE, INTL (SBBR)**

STANDARD ARRIVAL CHART  
INSTRUMENT (STAR)

**RWY 29L/29R**

**RNAV ISONU 1 - ISUSI 1 - NATIO 2**



z:\map\_icao\brasilia\sbb\lbb\_star\_max\_isonu\_1\_rw29l29r.dgn

DEPARTAMENTO DE CONTROLE DO ESPAÇO AEREO - COMAER - BRASIL

17 OCT 13 AIRAC MODIFICAÇÕES/CHANGES: FREQ.

**SBBR - RWY 29L/29R**

STAR RNAV ISONU 1 - ISUSI 1 - NATIO 2

DESCRIÇÃO TEXTUAL DA CHEGADA

I - CHEGADA ISONU 1:

APÓS A INTERSEÇÃO FLY-BY ISONU, VOAR (TF) 50.9 NM NO RUMO 217 PARA A INTERSEÇÃO FLY-BY PANDI, MANTER (TF) RUMO 217, VOAR 28.1 NM PARA O WAYPOINT FLY-BY BR072, CURVAR À ESQUERDA (TF) RUMO 187, VOAR 27.6 NM PARA A INTERSEÇÃO FLY-BY FLINT, CURVAR À DIREITA (TF) RUMO 191, VOAR 36.6 NM PARA O WAYPOINT FLY-BY BR073, CURVAR À DIREITA (TF) RUMO 243, VOAR 26.8 NM PARA O WAYPOINT FLY-BY BR059, CURVAR À ESQUERDA (TF) RUMO 228, VOAR 10.0 NM PARA O WAYPOINT FLY-BY BR011.

II - CHEGADA ISUSI 1:

APÓS A INTERSEÇÃO FLY-BY ISUSI, VOAR (TF) 39.9 NM NO RUMO 227 PARA A INTERSEÇÃO FLY-BY PAROL, MANTER (TF) RUMO 227, VOAR 39.2 NM PARA A INTERSEÇÃO FLY-BY FLINT, CURVAR À ESQUERDA (TF) RUMO 191, VOAR 36.6 NM PARA O WAYPOINT FLY-BY BR073, CURVAR À DIREITA (TF) RUMO 243, VOAR 26.8 NM PARA O WAYPOINT FLY-BY BR059, CURVAR À ESQUERDA (TF) RUMO 228, VOAR 10.0 NM PARA O WAYPOINT FLY-BY BR011.

III - CHEGADA NATIO 2:

APÓS A INTERSEÇÃO FLY-BY NATIO, VOAR (TF) 78.2 NM NO RUMO 187 PARA O WAYPOINT FLY-BY BR072, MANTER (TF) RUMO 187, VOAR 27.6 NM PARA A INTERSEÇÃO FLY-BY FLINT, CURVAR À DIREITA (TF) RUMO 191, VOAR 36.6 NM PARA O WAYPOINT FLY-BY BR073, CURVAR À DIREITA (TF) RUMO 243, VOAR 26.8 NM PARA O WAYPOINT FLY-BY BR059, CURVAR À ESQUERDA (TF) RUMO 228, VOAR 10.0 NM PARA O WAYPOINT FLY-BY BR011

ARRIVAL TEXTUAL DESCRIPTION

I - ISONU 1 ARRIVAL:

AFTER WAYPOINT FLY-BY ISONU, FLY (TF) 50.9 NM ON COURSE 217 TO INTERSECTION FLY-BY PANDI, MAINTAIN (TF) COURSE 217, FLY 28.1 NM TO WAYPOINT FLY-BY BR072, TURN LEFT (TF) COURSE 187, FLY 27.6 NM TO INTERSECTION FLY-BY FLINT, TURN RIGHT (TF) COURSE 191, FLY 36.6 NM TO WAYPOINT FLY-BY BR073, TURN RIGHT (TF) COURSE 243, FLY 26.8 NM TO WAYPOINT FLY-BY BR059, TURN LEFT (TF) COURSE 228, FLY 10.0 NM TO WAYPOINT FLY-BY BR011

II - ISUSI 1 ARRIVAL:

AFTER INTERSECTION FLY-BY ISUSI, FLY (TF) 39.9 NM ON COURSE 227 TO INTERSECTION FLY-BY PAROL, MAINTAIN (TF) COURSE 227, FLY 39.2 NM TO INTERSECTION FLY-BY FLINT, TURN LEFT (TF) COURSE 191, FLY 36.6 NM TO WAYPOINT FLY-BY BR073, TURN RIGHT (TF) COURSE 243, FLY 26.8 NM TO WAYPOINT FLY-BY BR059, TURN LEFT (TF) COURSE 228, FLY 10.0 NM TO WAYPOINT FLY-BY BR011

III - NATIO 2 ARRIVAL:

AFTER NATIO INTERSECTION FLY-BY NATIO, FLY (TF) 78.2 ON COURSE 187 TO WAYPOINT FLY-BY BR072, MAINTAIN (TF) COURSE 187, FLY 27.6 NM TO INTERSECTION FLY-BY FLINT, TURN RIGHT (TF) COURSE 191, FLY 36.6 NM TO WAYPOINT FLY-BY BR073 TURN RIGHT (TF) COURSE 243, FLY 26.8 NM TO WAYPOINT FLY-BY BR059, TURN LEFT (TF) COURSE 228, FLY 10.0 NM TO WAYPOINT FLY-BY BR011