

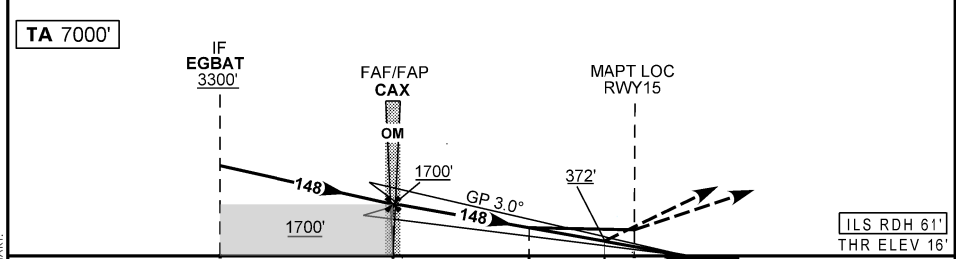
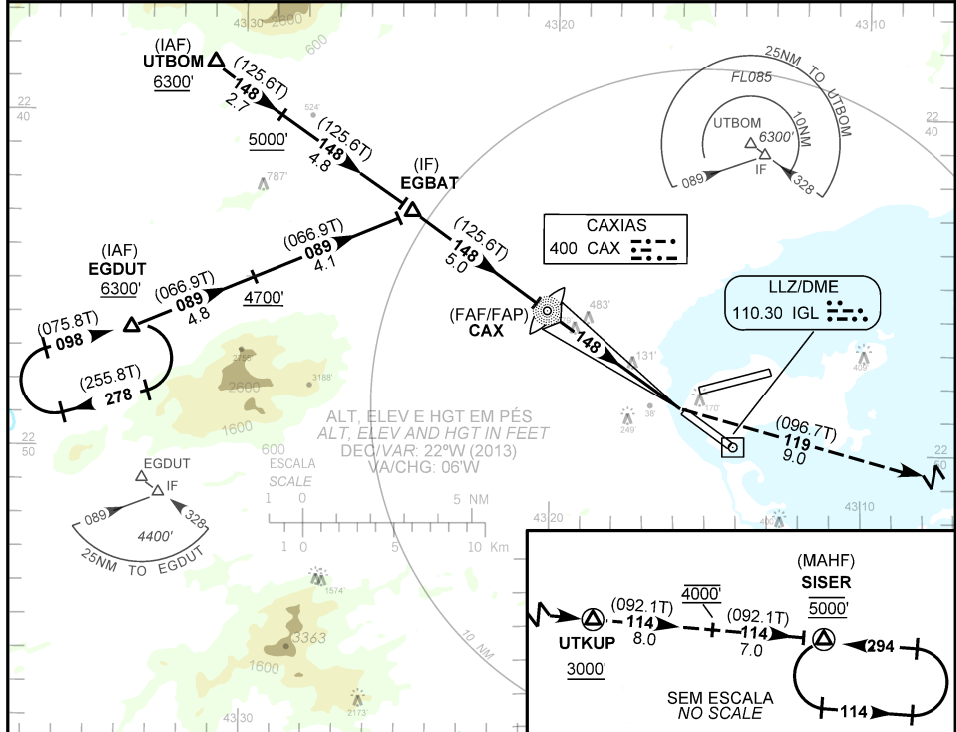
CARTA DE APROXIMAÇÃO  
POR INSTRUMENTOS (IAC)

RIO DE JANEIRO / Galeão - Antônio Carlos Jobim, INTL (SBGL)

ILS T ou/ou LOC T RWY 15

AD ELEV: 28'	ATIS 127.60	APP RIO 119.00 119.35 120.55 126.20 128.90 129.20 129.80 133.30 135.60 121.50	TWR GALEÃO 118.00 118.20 121.50	GNDC GALEÃO 121.35 121.65
--------------	----------------	---	------------------------------------	------------------------------

RMK: 1) RNAV 1 ou/ou RNP 1. Aproximação Perdida: 1) Subir para 5000', gradiente MNM 5%. Curvar à esquerda, rumo 119 para UTKUP. Após, curvar à esquerda, rumo 114 para espera em SISER. 2) IAS MAX 230KT.  
Missed Approach: 1) Climb to 5000', MNM gradient 5%. Turn left, course 119 to UTKUP. After, turn left, course 114 for holding at SISER. 2) IAS MAX 230KT.



TO THR 15 (NM)	10.0	5.0	1.8	0.9	0.7	0.0
TO IGL (DME)	11.8	6.8	3.6	2.7	2.5	1.8

CAX	4.0	3.0	2.0	1.0	0.9	RWY15	KT	090	110	130	150	170	190
1700	1365	1040	717	396	372	ALT	FPM	500	600	700	800	900	1000
1684	1349	1024	701	380	356	(HGT)	FAP-MAPT 4.3NM	2.52	2.21	1.59	1.43	1.31	1.21

POUSO DIRETO STRAIGHT-IN	CAT	A	B	C	D	E
	DA / OCH / TETO	372 / 360 / 400				
CAT I	ALS/NO ALS/RVR ALS (m)	900 / 1600 / 850				
	MDA / OCH / TETO	650 / 640 / 700				
LOC	ALS/NO ALS/RVR ALS (m)	800 / 1600 / NIL		2200 / 2900 / NIL		

CIRCULAR TO CIRCLE	MDA / OCH / TETO	NA
	VIS (m)	

MODIFICAÇÕES / CHANGES: CARTA NOVA/NEW CHART.