

CARTA DE APROXIMAÇÃO  
POR INSTRUMENTOS (IAC)

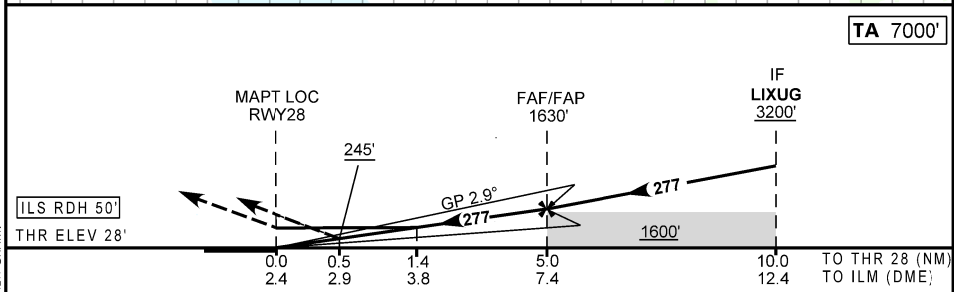
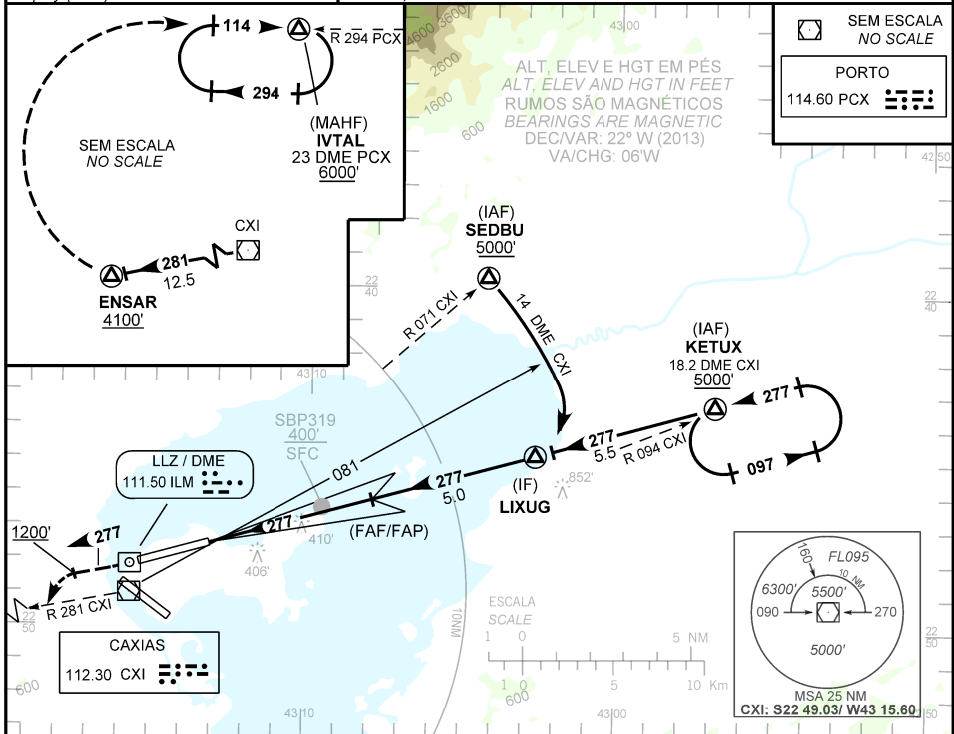
RIO DE JANEIRO / Galeão - Antônio Carlos Jobim, INTL (SBGL)

INSTRUMENT APPROACH CHART (IAC)

ILS V ou/or LOC V RWY 28

|              |                |   |                                    |                               |
|--------------|----------------|---|------------------------------------|-------------------------------|
| AD ELEV: 28' | ATIS<br>127.60 | APP RIO<br>119.00 119.35 120.55 126.20 128.90<br>129.20 129.80 133.30 135.60 121.50 | TWR GALEÃO<br>118.00 118.20 121.50 | GNDCL GALEÃO<br>121.35 121.65 |
|--------------|----------------|---|------------------------------------|-------------------------------|

RMK: 1) (\*) VIS RVR ALS 550m para aproximação utilizando Diretor de Voo, Piloto Automático ou Head-Up Display (HUD).  
Aproximação Perdida: 1) Subir para 6000', gradiente MNM 5%. Manter rumo 277 até 1200'. Curvar à esquerda, RDL 281 CXI até ENSAR. Após, curvar à direita, RDL 294 PCX para espera em IVTAL. 2) IAS MAX 220 Kt.  
RMK: 1) (\*) VIS RVR ALS 550m for approach using a Flight Director, Autopilot or Head-Up Display (HUD).  
Missed Approach: 1) Climb to 6000', MNM gradient 5%. 1) Maintain course 277 until 1200'. Turn left, 281 CXI RDL until ENSAR. Then, turn right, 294 PCX RDL for holding at IVTAL. 2) IAS MAX 220 Kt.



| RWY28 | 0.5 | 1.0 | 2.0 | 3.0  | 4.0  | FAF/FAP | KT            | 090  | 110  | 130  | 150  | 170  | 190  |
|-------|-----|-----|-----|------|------|---------|---------------|------|------|------|------|------|------|
| ALT   | 245 | 381 | 694 | 1006 | 1318 | 1630    | FPM           | 500  | 600  | 700  | 800  | 900  | 1000 |
| (HGT) | 217 | 353 | 666 | 978  | 1290 | 1602    | FAF-MAPT 5 NM | 3:20 | 2:44 | 2:18 | 2:00 | 1:46 | 1:35 |

| POUSO DIRETO<br>STRAIGHT-IN | CAT                    |                 |  |  |  | A                | B                    | C               | D                 | E  |
|-----------------------------|------------------------|-----------------|--|--|--|------------------|----------------------|-----------------|-------------------|----|
|                             | DA / OCH / TETO        |                 |  |  |  |                  |                      |                 |                   |    |
| CAT I                       | DA / OCH / TETO        | 245 / 220 / 300 |  |  |  | 800 / 1600 / NIL | 800 / 1200 / 700 (*) | 530 / 510 / 600 | 1600 / 2400 / NIL | NA |
|                             | ALS/NO ALS/RVR ALS (m) |                 |  |  |  |                  |                      |                 |                   |    |
| LOC                         | MDA / OCH / TETO       | 530 / 510 / 600 |  |  |  | 800 / 1600 / NIL | 800 / 1200 / 700 (*) | 530 / 510 / 600 | 1600 / 2400 / NIL | NA |
|                             | ALS/NO ALS/RVR ALS (m) |                 |  |  |  |                  |                      |                 |                   |    |
| CIRCULAR<br>TO CIRCLE       | MDA / OCH / TETO       | 530 / 510 / 600 |  |  |  | 800 / 1600 / NIL | 800 / 1200 / 700 (*) | 530 / 510 / 600 | 1600 / 2400 / NIL | NA |
|                             | VIS (m)                |                 |  |  |  |                  |                      |                 |                   |    |

MODIFICAÇÕES / CHANGES: CARTA NOVA/NEW CHART