

CARTA DE APROXIMAÇÃO  
POR INSTRUMENTOS (IAC)

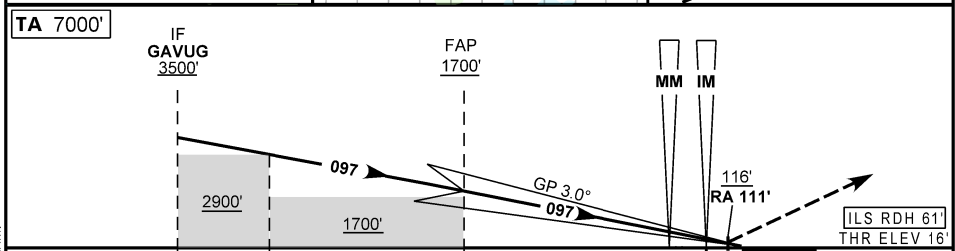
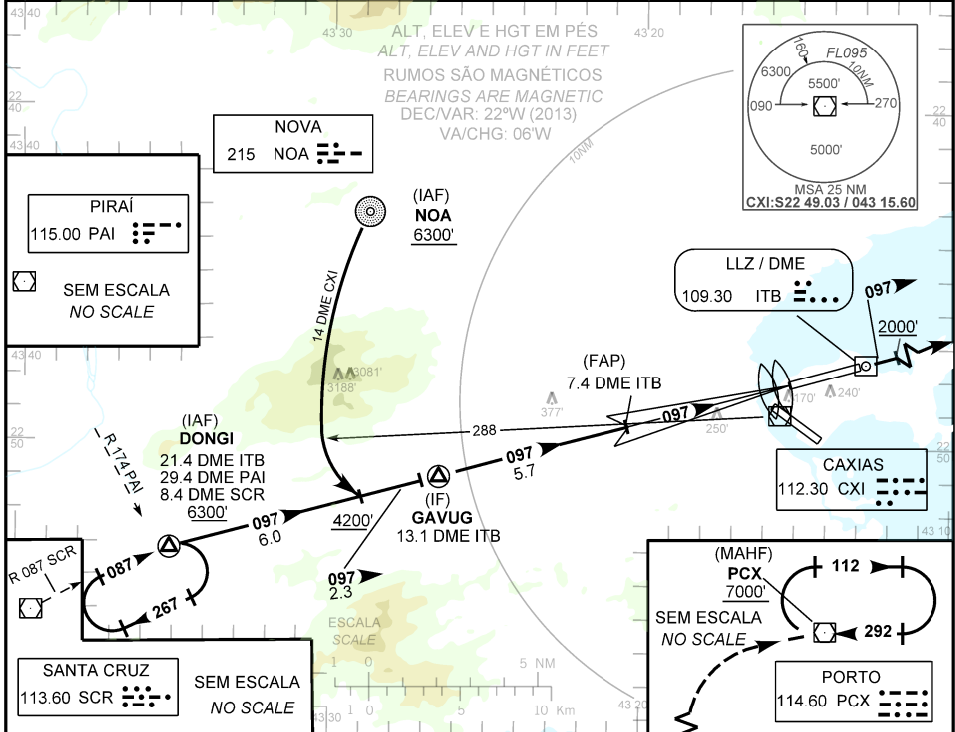
RIO DE JANEIRO / Galeão - Antônio Carlos Jobim, INTL (SBGL)

ILS U CAT II RWY 10

AD ELEV: 28'	ATIS 127.60	APP RIO 119.00 119.35 120.55 126.20 128.90 129.20 129.80 133.30 135.60 121.50	TWR GALEÃO 118.00 118.20 121.50	GND C GALEÃO 121.35 121.65
--------------	----------------	---	------------------------------------	-------------------------------

RMK: IAS MAX 200Kt em NOA.  
RMK: MAX IAS 200Kt at NOA.

Aproximação Perdida: Subir para 7000', gradiente MNM 5%. Manter rumo 097 até 2000'. Após, curvar à direita para espera no VOR PCX.  
Missed approach: 1) Climb to 7000', MNM gradient 5%. Maintain course 097 until 2000'. Then, turn right for holding at PCX VOR.



TO THR 10(NM)	10.7	8.7	5.0	0.5	0.2	0.1	0.0	10.0
TO ITB (DME)	13.1	11.1	7.4	2.9	2.6	2.5	2.4	

FAP	4.0	3.0	2.0	1.0	0.1	RWY10	KT	090	110	130	150	170	190
1700	1365	1040	717	396	116	ALT	FPM	500	600	700	800	900	1000
1684	1349	1024	701	380	100	(HGT)	FAF-MAPT	NIL					

POUSO DIRETO STRAIGHT-IN	CAT	A	B	C	D	E
CAT II	DA / OCH / RA / TETO	116 / 100 / 111 / 100				
	ALS/NO ALS/RVR ALS (m)	NIL / NIL / 400				

CIRCULAR TO CIRCLE	MDA / OCH / TETO	NA
	VIS (m)	

MODIFICAÇÕES / CHANGES: CARTA NOVA/NEW CHART.