

CARTA DE APROXIMAÇÃO  
POR INSTRUMENTOS (IAC)

SÃO PAULO / Guarulhos - Gov. André Franco Montoro, INTL (SBGR)

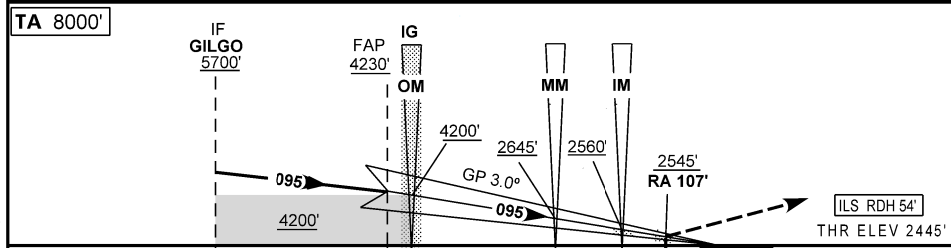
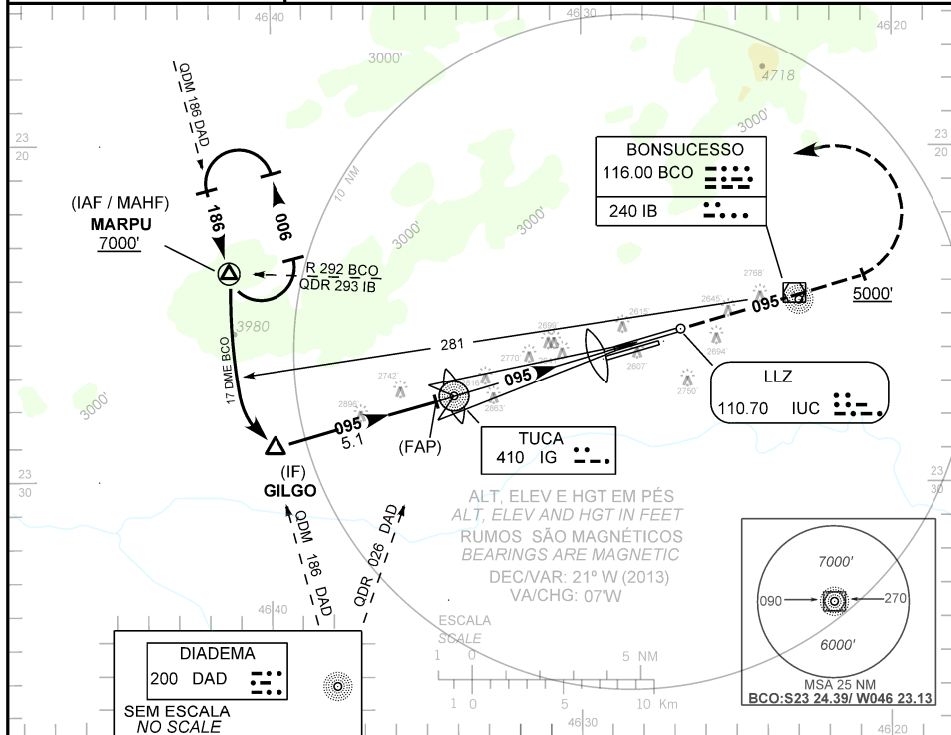
ILS W CAT II RWY 09L

AD ELEV: 2459'	ATIS 127.75	APP SÃO PAULO 119.60 119.80 120.85 125.60 129.50 129.75 133.65 134.90 135.75 121.50	TWR GUARULHOS 118.40 132.75 135.20 121.50	GNDG GUARULHOS 121.70 126.90
----------------	----------------	---	--	---------------------------------

RMK: IAS MAX em MARPU 190Kt.  
RMK: MAX IAS at MARPU 190Kt.

Aproximação Perdida: 1) Subir para 7000', gradiente MNM 5%. Manter rumo 095 até cruzar 5000'. Curvar à esquerda, QDR 293 IB / RDL 292 BCO para espera em MARPU. 2) IAS MAX 230Kt.

Missed approach: 1) Climb to 7000', MNM gradient 5%. Maintain course 095 until 5000'. Then, turn left, 293 IB QDR / 292 RDL BCO for holding at MARPU. 2) MAX IAS 230Kt.



TO THR 09L (NM)	10.5	5.4	5.3	0.5	0.2	0.1	0.0	
TO BCO (DME)	16.1	11.0	10.9	6.1	5.8	5.7	5.6	

FAP	4.0	3.0	2.0	1.0	0.15	RWY09L	KT	090	110	130	150	170	190
	4230	3775	3450	3135	2830	2545	FPM	500	600	700	800	900	1000
	1785	1330	1005	690	385	100	FAP-MAPT	NIL					

POUSO DIRETO STRAIGHT-IN	CAT	A	B	C	D	E
CAT II	DA / OCH / RA / TETO	2545 / 100 / 107 / 100				NA
	RVR (m)	400				

CIRCULAR TO CIRCLE	MDA / OCH / TETO	NA
	VIS (m)	

MODIFICAÇÕES / CHANGES: CARTA NOVA/NEW CHART.