

CARTA DE APROXIMAÇÃO  
POR INSTRUMENTOS (IAC)

SÃO PAULO / Guarulhos - Gov. André Franco Montoro, INTL (SBGR)

INSTRUMENT APPROACH CHART (IAC)

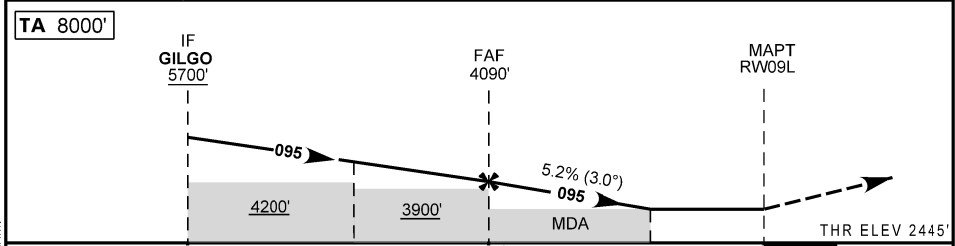
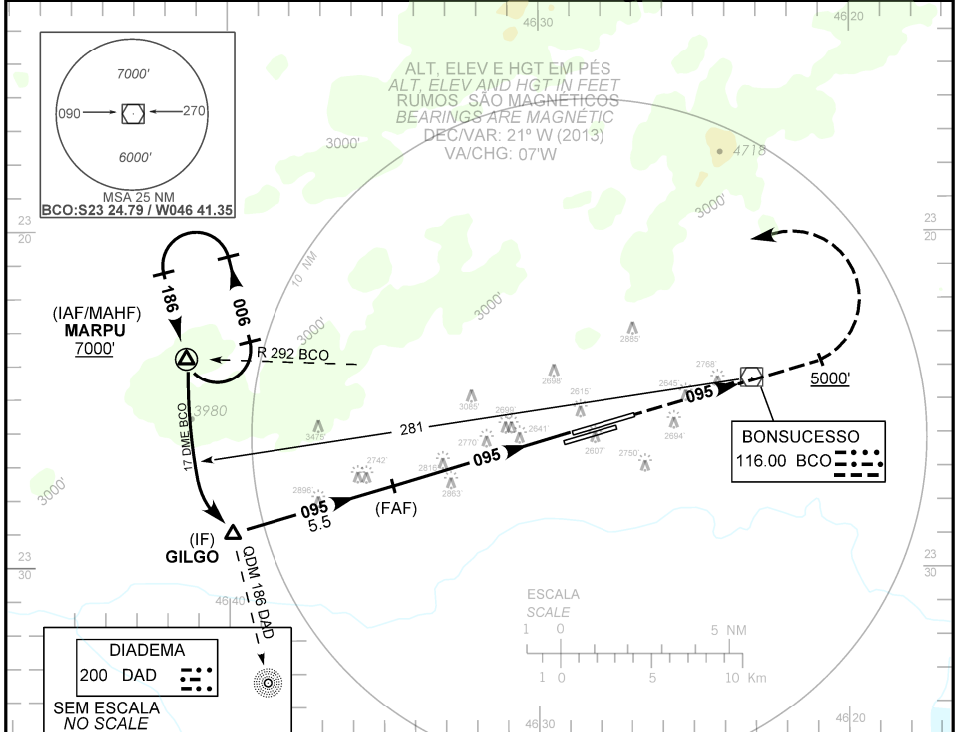
VOR RWY 09L

AD ELEV: 2459'	ATIS 127.75	APP SÃO PAULO 119.60 119.80 120.85 125.60 129.50 129.75 133.85 134.90 135.75 121.50	TWR GUARULHOS 118.40 132.75 135.20 121.50	GND C GUARULHOS 121.70 126.90
----------------	----------------	---	--	----------------------------------

RMK: IAS MAX em MARPU 190Kt.  
RMK: MAX IAS at MARPU 190Kt.

Aproximação Perdida: 1) Subir para 7000', gradiente MNM 5%. Manter rumo 095 até cruzar 5000'. Após, curvar à esquerda, RDL 292 BCO para espera em MARPU. 2) IAS MAX 230Kt.

Missed approach: 1) Climb to 7000', MNM gradient 5%. Maintain course 095 until 5000'. Then, turn left, 292 BCO RDL for holding at MARPU. 2) MAX IAS 230Kt.



TO THR 09L (NM)	10.5	7.0	5.0	2.1	0.0
TO BCO (DME)	16.1	12.6	10.6	7.7	5.6

FAF	4.0	3.0	2.1	RWY09L	KT	090	110	130	150	170	190
4090	3769	3450	3180	ALT	FPM	500	600	700	800	900	1000
1645	1324	1005	735	(HGT)	FAF-MAPT 5NM	3.20	2.43	2.18	2.00	1:45	1:34

POUSO DIRETO STRAIGHT-IN	CAT	A	B	C	D	E
VOR	MDA / OCH / TETO	3180 / 740 / 800			NA	
	ALS/NO ALS/RVR ALS (m)	800 / 1600 / NIL			2700 / 3400 / NIL	
CIRCULAR TO CIRCLE	MDA / OCH / TETO	NA				
	VIS (m)					

MODIFICAÇÕES / CHANGES: CARTA NOVA/NEW CHART.