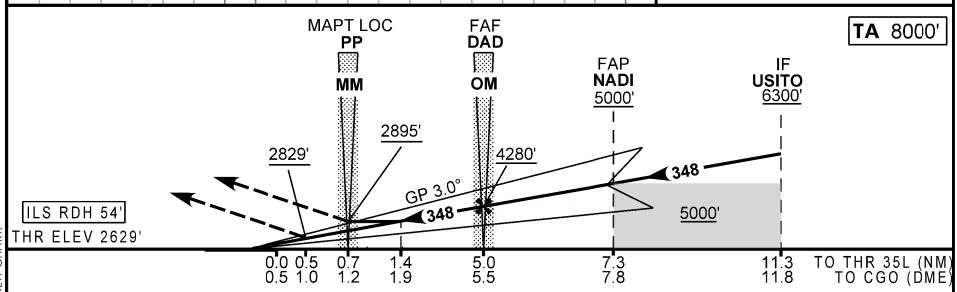
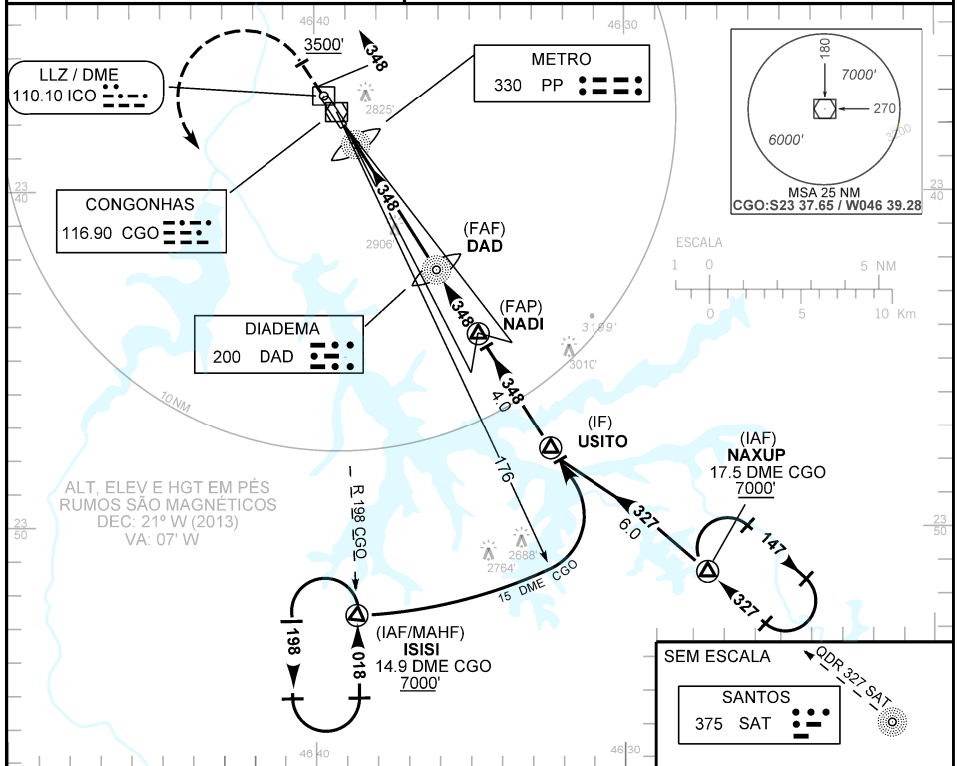


CARTA DE APROXIMAÇÃO  
 POR INSTRUMENTOS (IAC)  
 INSTRUMENT APPROACH CHART (IAC)

SÃO PAULO / Congonhas (SBSP)  
 ILS Y ou LOC Y RWY 35L

AD ELEV: 2631'	ATIS 127.65	APP SÃO PAULO 119.25 119.60 119.80 120.85 129.50 132.10 133.85 134.90 135.75 121.50	TWR SÃO PAULO 118.05 127.15 121.50	GNDC SÃO PAULO 121.90
----------------	----------------	---	---------------------------------------	--------------------------

RMK: NIL. Aproximação perdida: 1) Subir para 7000', gradiente MNM 4%. Manter rumo 348 até 3500'. Curvar à esquerda RDL 198 CGO para espera em SISI. 2) IAS MAX 230 Kt



RW35L	0.5	1.0	2.0	3.0	4.0	DAD	KT	90	110	130	150	170	190
ALT	2829	3006	3325	3644	3962	4280	FPM	500	600	700	800	900	1000
(HGT)	200	377	696	1015	1333	1651	FAF-MAPT 4.5 NM	3:00	2:27	2:04	1:48	1:35	1:25

POUSO DIRETO	CAT	A	B	C	D	E	
CAT I	DA / OCH / TETO	2829 / 200 / 200					NA
	ALS/NO ALS/RVR ALS (m)	NIL / 1200 / NIL					
LOC	MDA / OCH / TETO	3130 / 500 / 500					
	ALS/NO ALS/RVR ALS (m)	NIL / 1600 / NIL		NIL / 2400 / NIL			
CIRCULAR	MDA / OCH / TETO	NA					
	VIS (m)						

MODIFICAÇÕES / CHANGES: CARTA NOVA / NEW CHART