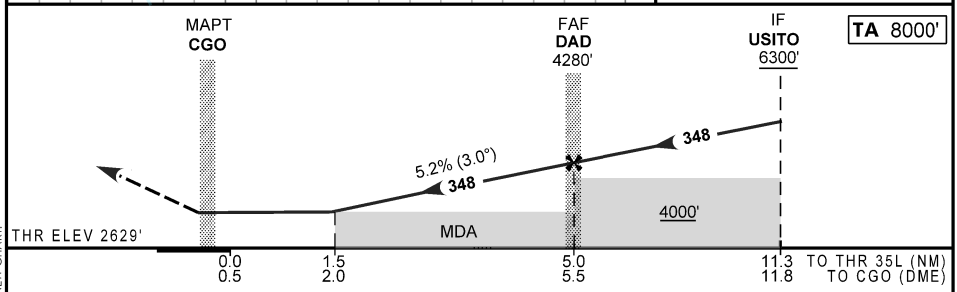
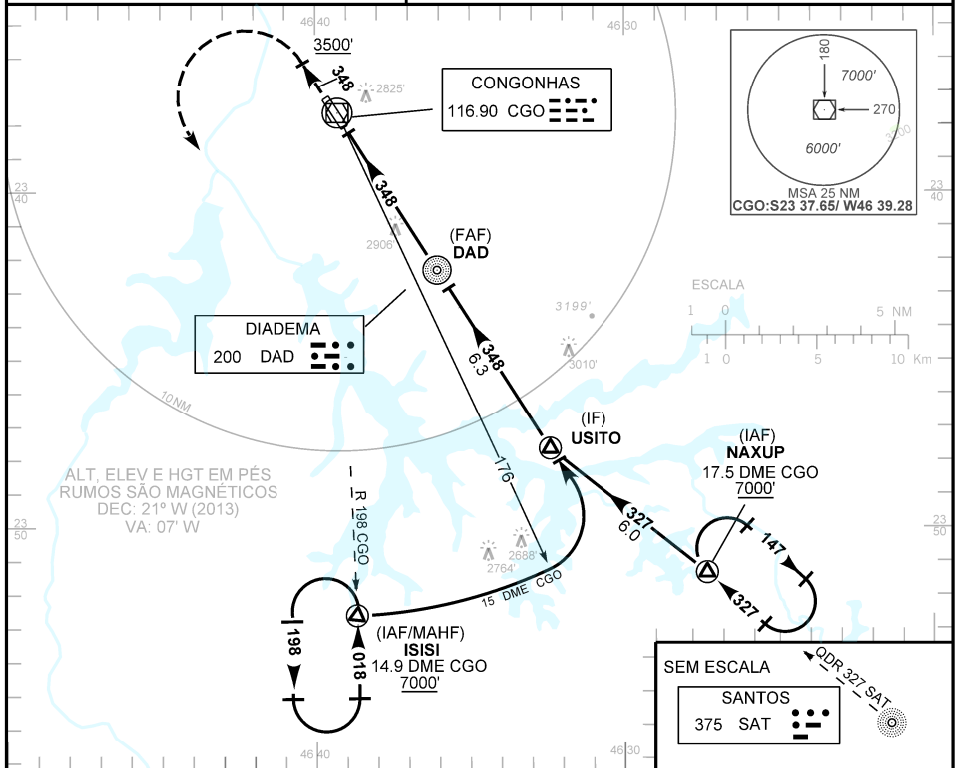


CARTA DE APROXIMAÇÃO
POR INSTRUMENTOS (IAC)
INSTRUMENT APPROACH CHART (IAC)

SÃO PAULO / Congonhas (SBSP)

VOR Z RWY 35L

AD ELEV: 2631'	ATIS 127.65	APP SÃO PAULO 119.25 119.60 119.80 120.85 129.50 132.10 133.85 134.90 135.75 121.50	TWR SÃO PAULO 118.05 127.15 121.50	GNDC SÃO PAULO 121.90
RMK: NIL.		Aproximação Perdida: 1) Subir para 7000', gradiente MNM 4%. Manter rumo 348 até 3500'. Curvar à esquerda, RDL 198 CGO para espera em ISISI. 2) IAS MAX 230Kt.		



RWY35L	1.5	2.0	3.0	4.0	DAD										
ALT	3160	3325	3643	3962	4280										
(HGT)	529	696	1014	1333	1651										
POUSO DIRETO	CAT		A		B		C		D		E				
VOR	MDA / OCH / TETO		3160 / 530 / 600									NA			
	ALS/NO ALS/RVR ALS (m)		NIL / 1600 / NIL						NIL / 2400 / NIL						
CIRCULAR	MDA / OCH / TETO		NA												
	VIS (m)														

MODIFICAÇÕES / CHANGES: CARTA NOVA/NEW CHART.