

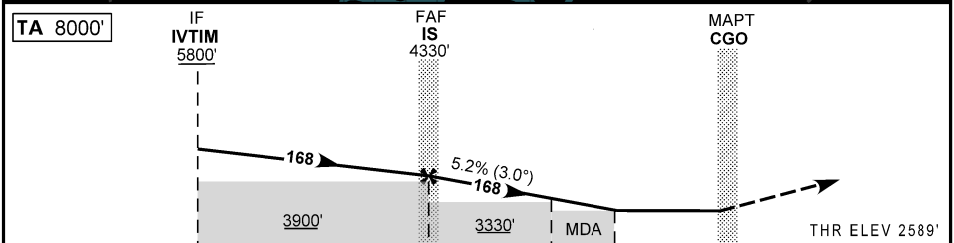
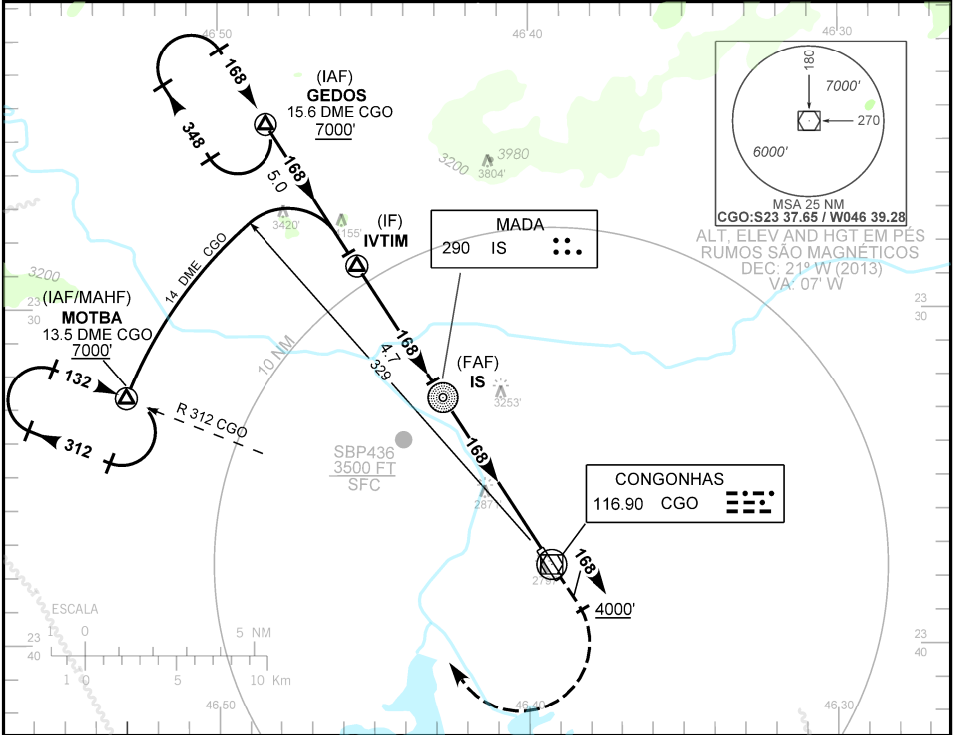
CARTA DE APROXIMAÇÃO
POR INSTRUMENTOS (IAC)
INSTRUMENT APPROACH CHART (IAC)

SÃO PAULO / Congonhas (SBSP)
VOR Z RWY 17R

AD ELEV: 2631'	ATIS 127.65	APP SÃO PAULO 119.25 119.60 119.80 129.50 120.85 132.10 133.85 134.90 135.75 121.50	TWR SÃO PAULO 118.05 127.15 121.50	GNDC SÃO PAULO 121.90
----------------	----------------	---	---------------------------------------	--------------------------

RMK: NIL

Aproximação Perdida: 1) Subir para 7000', gradiente MNM de 5%. Manter RDL 168 CGO até 4000'. Após, curvar à direita, RDL 312 CGO para espera em MOTBA. 2) IAS MAX 180KT.



TO THR 17R (NM)	10.0	5.3	2.4	1.5	0.0
TO CGO (DME)	10.6	5.9	3.0	2.1	0.6

IS	5.0	4.0	3.0	2.0	1.5	RWY17R	KT	090	110	130	150	170	190
4330	4231	3913	3594	3276	3120	ALT	FPM	550	650	750	900	1000	1100
1741	1642	1324	1005	687	531	(HGT)	FAF-MAPT 5.9 NM	3:56	3:13	2:43	2:21	2:04	1:52

POUSO DIRETO	CAT		A	B	C	D	E
	MDA / OCH / TETO	3120 / 540 / 600					NA
VOR	ALS/NO ALS/RVR ALS (m)		800 / 1600 / NIL		1700 / 2400 / NIL		
CIRCULAR	MDA / OCH / TETO		NA				
	VIS (m)						

MODIFICAÇÕES / CHANGES: CARTA NOVA/NEW CHART.