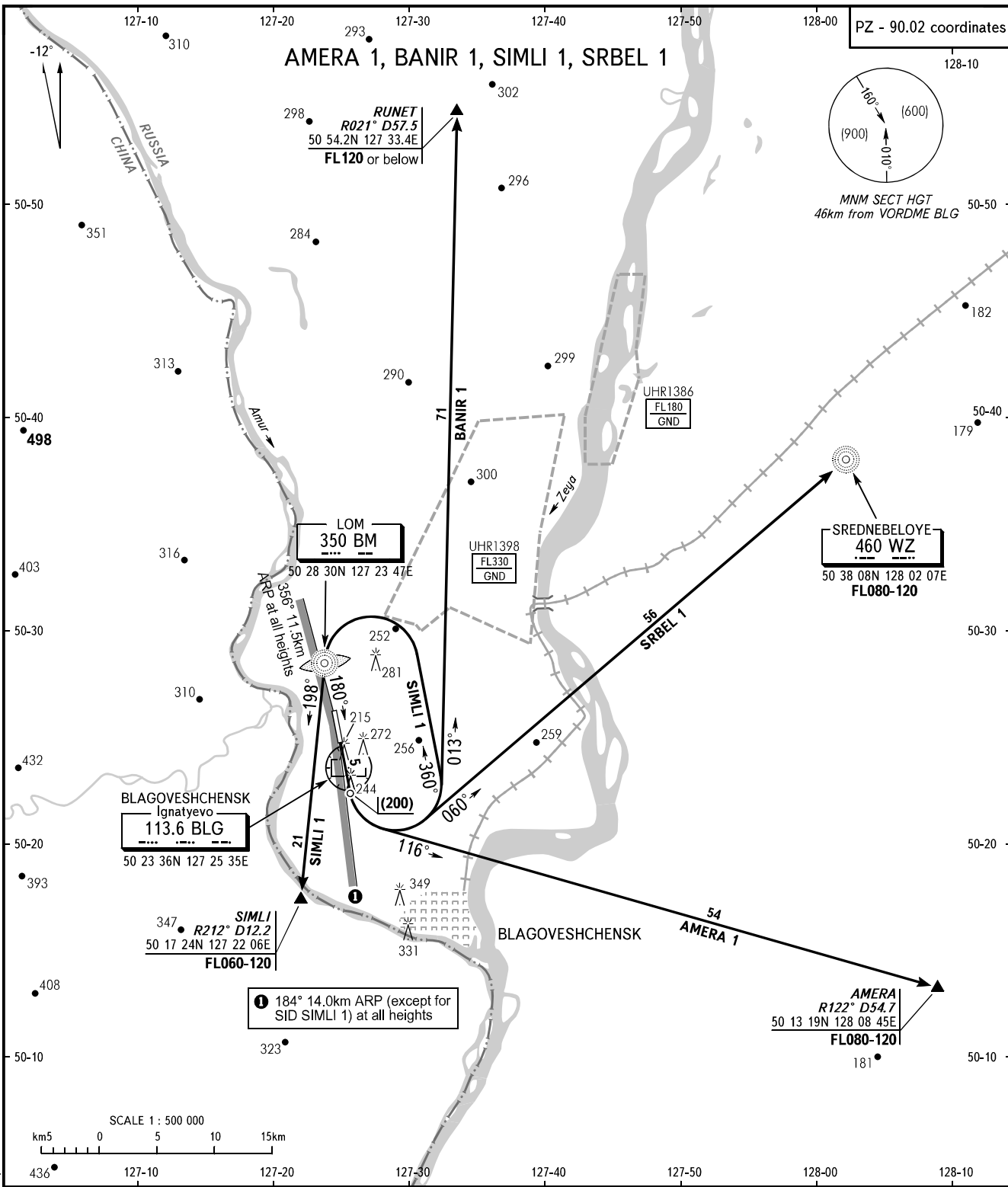


STANDARD DEPARTURE CHART  
INSTRUMENT (SID) - ICAO

TRANSITION  
HEIGHT: (900)

BLAGOVESHCHENSK, RUSSIA  
IGNATYEVO  
RWY 18



TOWER 127.200

- WARNING:**
1. These SID are available to all ACFT types.
  2. Initial turn shall be executed at a distance not more than 9km from RWY THR.
  3. CAT C, D ACFT are allowed to make initial turn at (100).
  4. The climb gradient shall be 3.7% for passing CRP AMERA at FL080.

BEARINGS AND TRACKS ARE MAGNETIC  
ALTITUDES, HEIGHTS AND ELEVATIONS ARE IN METRES  
DISTANCES ARE IN KILOMETRES