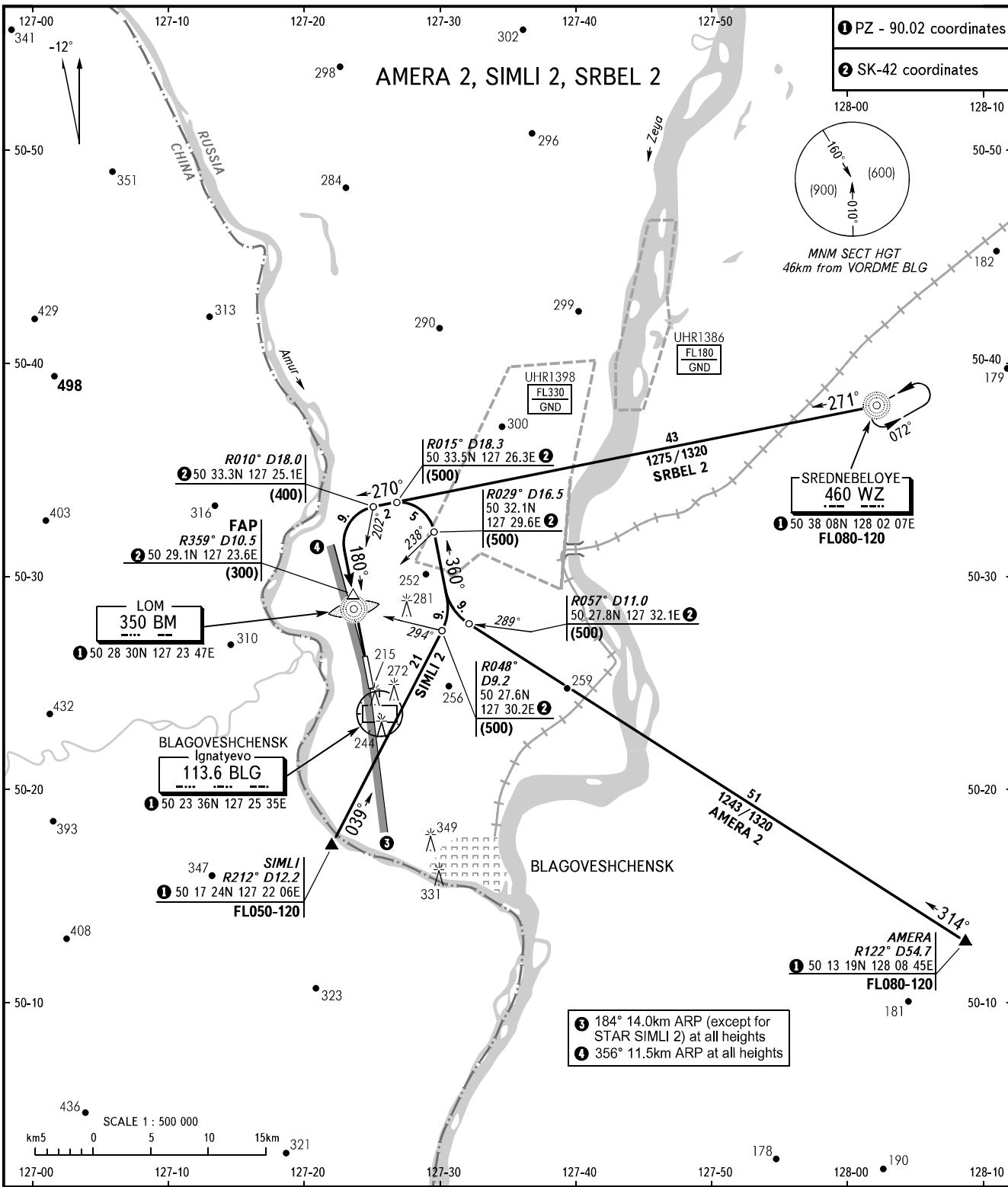


STANDARD ARRIVAL CHART  
INSTRUMENT (STAR) - ICAO

TRANSITION  
LEVEL: **FL050**

**BLAGOVESHCHENSK, RUSSIA**  
IGNATYEV  
RWY 18



TOWER 127.200

**WARNING:**

1. The procedure envisages descending when executing a final turn.
2. STAR routes shall be carried out under control of the ATS controller.

BEARINGS AND TRACKS ARE MAGNETIC  
 ALTITUDES, HEIGHTS AND ELEVATIONS ARE IN METRES  
 DISTANCES ARE IN KILOMETRES