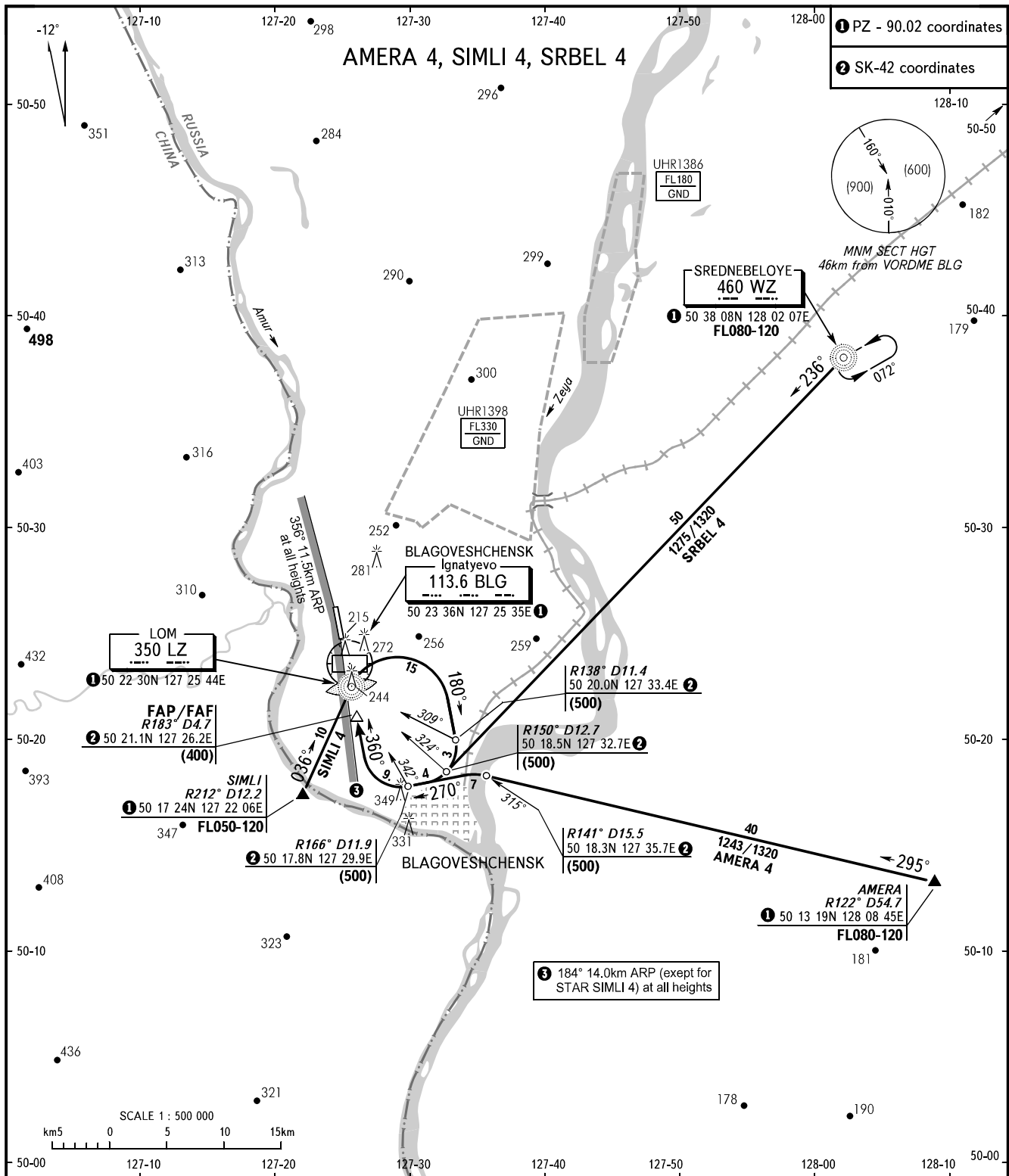


STANDARD ARRIVAL CHART
INSTRUMENT (STAR) - ICAO

TRANSITION
LEVEL: **FL 050**

BLAGOVESHCHENSK, RUSSIA
IGNATYEVO
RWY 36



TOWER **127.200**

WARNING:

1. Vertical clearance of not less than 240m shall be provided during initial approach.
2. The procedure envisages descending when executing a final turn.
3. STAR routes shall be carried out under control of the ATS controller.

BEARINGS AND TRACKS ARE MAGNETIC
ALTITUDES, HEIGHTS AND ELEVATIONS ARE IN METRES
DISTANCES ARE IN KILOMETRES