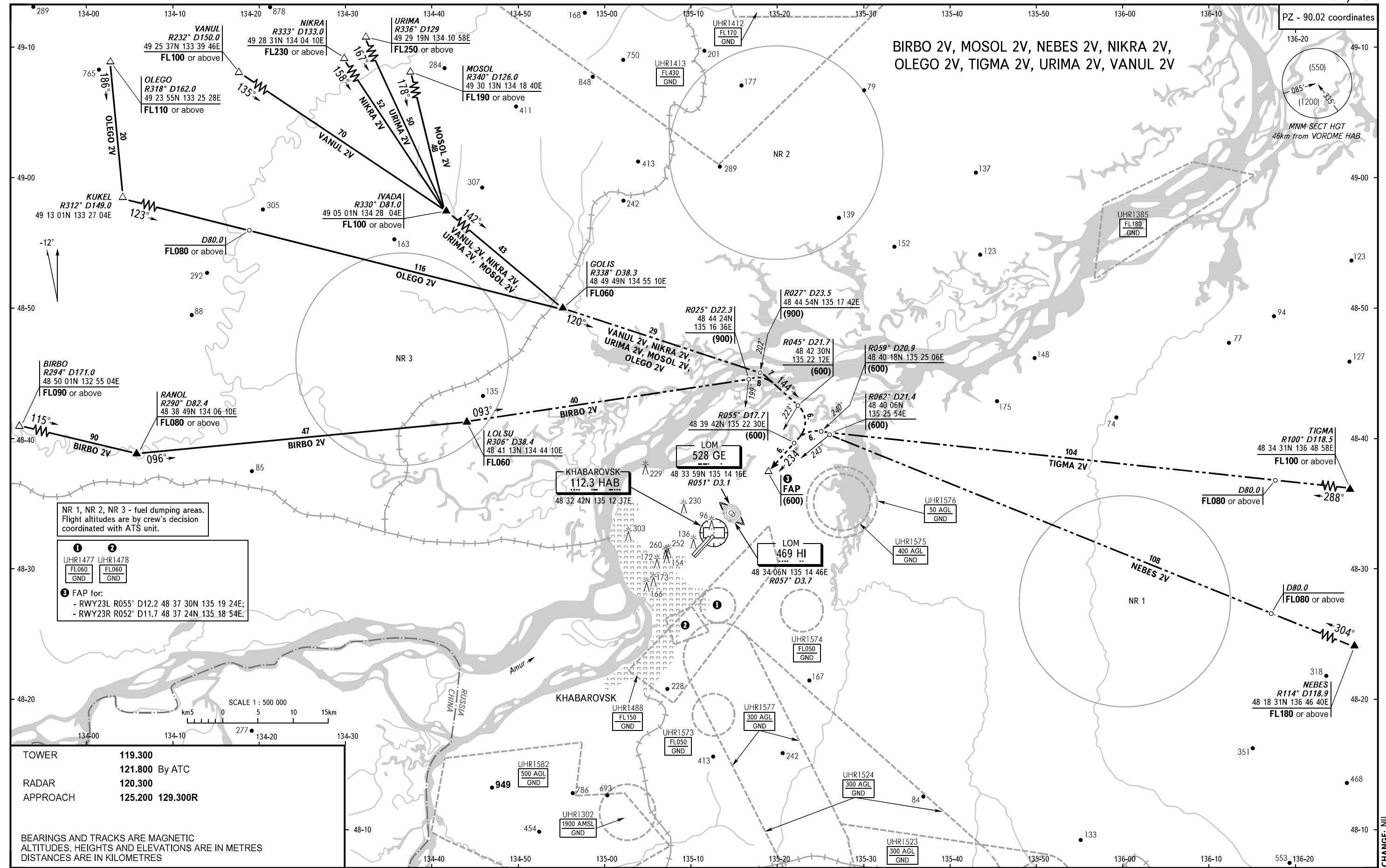


STANDARD ARRIVAL CHART
INSTRUMENT (STAR) - ICAO

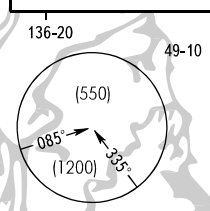
KHABAROVSK, RUSSIA
NOVY
RWY 23L/23R

TRANSITION
LEVEL: FL050



PZ - 90.02 coordinates

BIRBO 2V, MOSOL 2V, NEBES 2V, NIKRA 2V,
OLEGO 2V, TIGMA 2V, URIMA 2V, VANUL 2V



NR 1, NR 2, NR 3 - fuel dumping areas.
Flight altitudes are by crew's decision
coordinated with ATS unit.

① UHR1477 UHR1478
FL060 GND FL060 GND

② FAP for:
- RWY23L R055° D12.2 48 37 30N 135 19 24E;
- RWY23R R052° D11.7 48 37 24N 135 18 54E.

TOWER 119.300
RADAR 121.800 By ATC
APPROACH 120.300 129.300R

BEARINGS AND TRACKS ARE MAGNETIC
ALTITUDES, HEIGHTS AND ELEVATIONS ARE IN METRES
DISTANCES ARE IN KILOMETRES