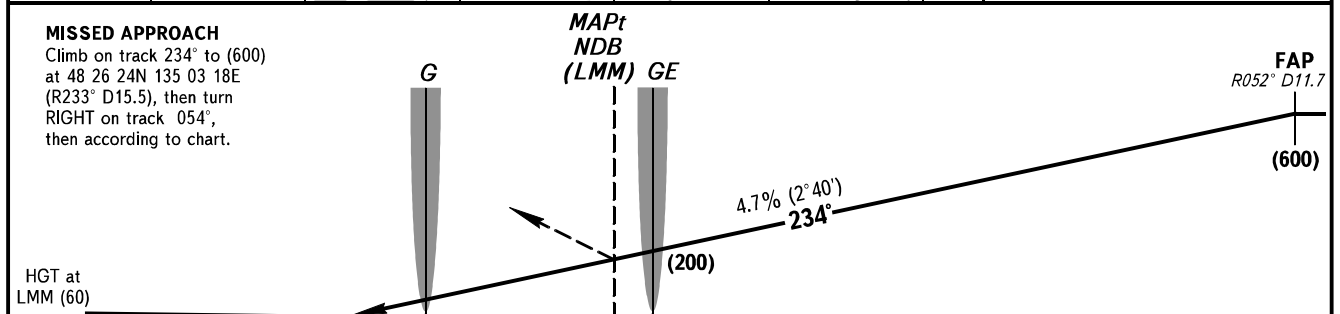
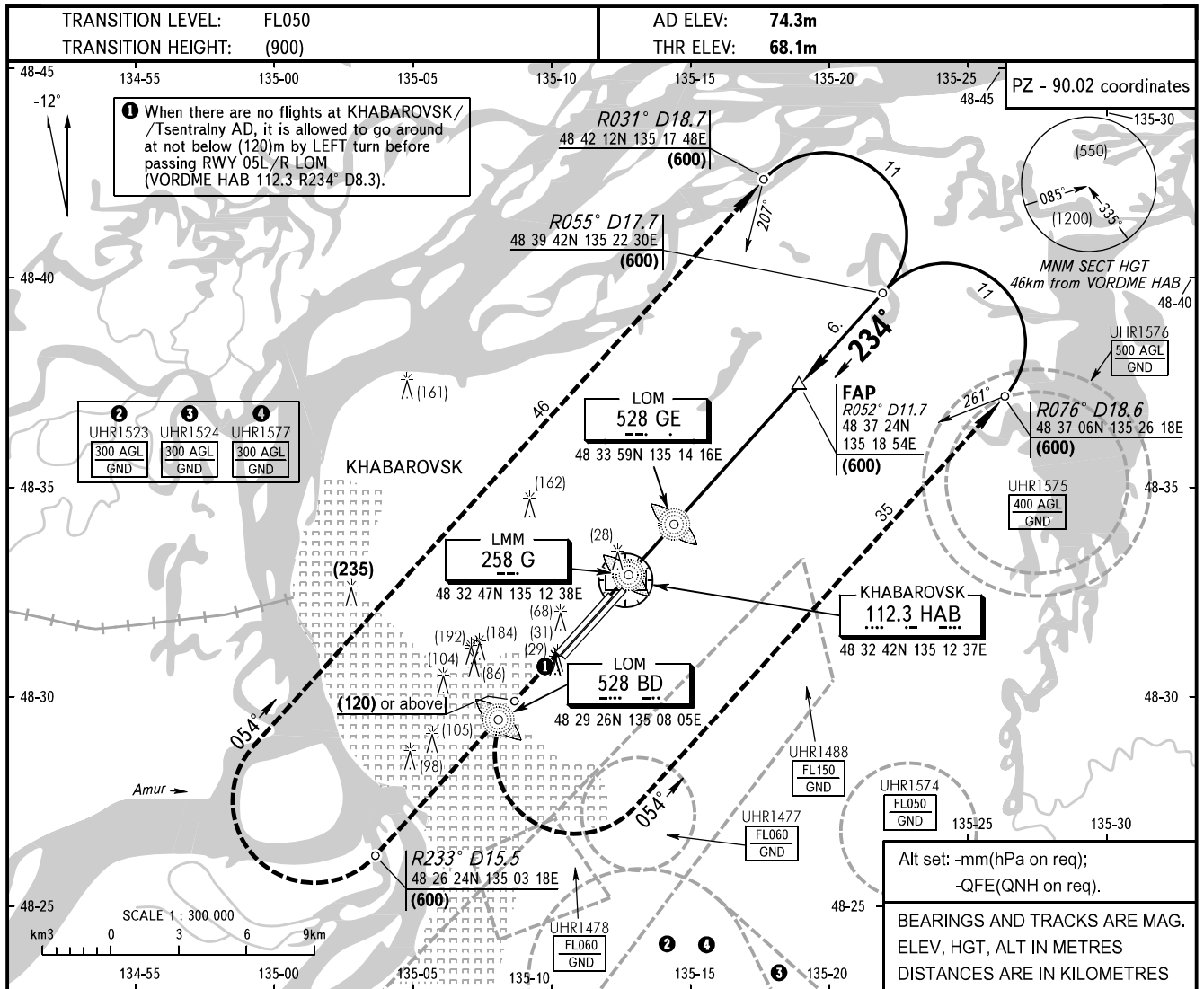


**INSTRUMENT
APPROACH
CHART - ICAO**

APPROACH	125.2 129.3R
RADAR	120.3
TOWER	119.3
	121.8 By ATC

KHABAROVSK, RUSSIA
NOVY
PAR, 2 NDB, NDB RWY 23R



OCA/H		A	B	C	D
Straight-in	PAR	132(64)	135(67)	138(70)	141(73)
	2 NDB	182(114)	182(114)	182(114)	182(114)
Approach	NDB(LOM)	182(114)	182(114)	182(114)	182(114)
	NDB(LMM)	257(189)	257(189)	257(189)	257(189)

WARNING:

- By coordination with ATC it is allowed to turn RIGHT before passing RWY 05L/R LOM (VORDME HAB 112.3 R234° D8.3) at not below (600).
- During PAR approach the distance from touchdown (300m from RWY beginning) to ACFT shall be determined by PAR.

GROUND SPEED	km/h	150	180	210	240	270	300	330	360	390	420	450
LOM-THR 4000m	min:sec	1.36	1.20	1.09	1.00	0.53	0.48	0.44	0.40	0.37	0.34	0.32
RATE OF DESCENT	m/s	2.0	2.4	2.7	3.1	3.5	3.9	4.3	4.7	5.1	5.5	5.9