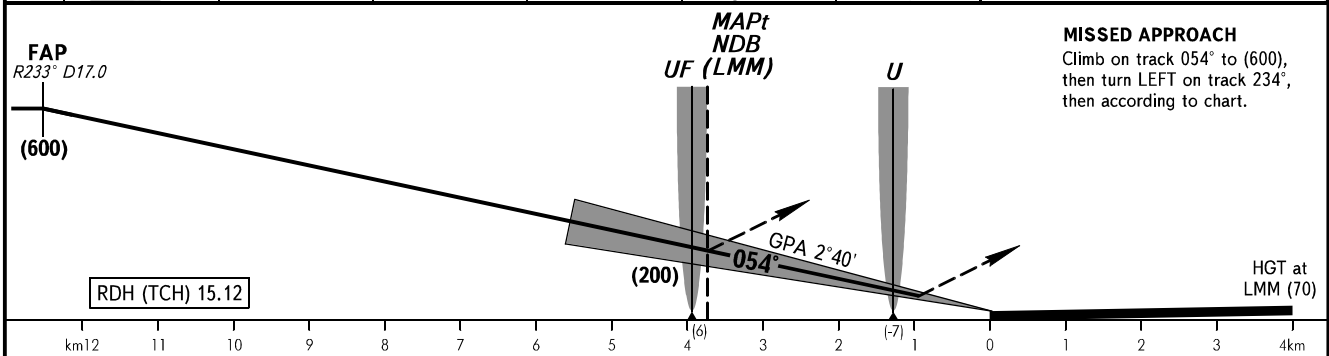
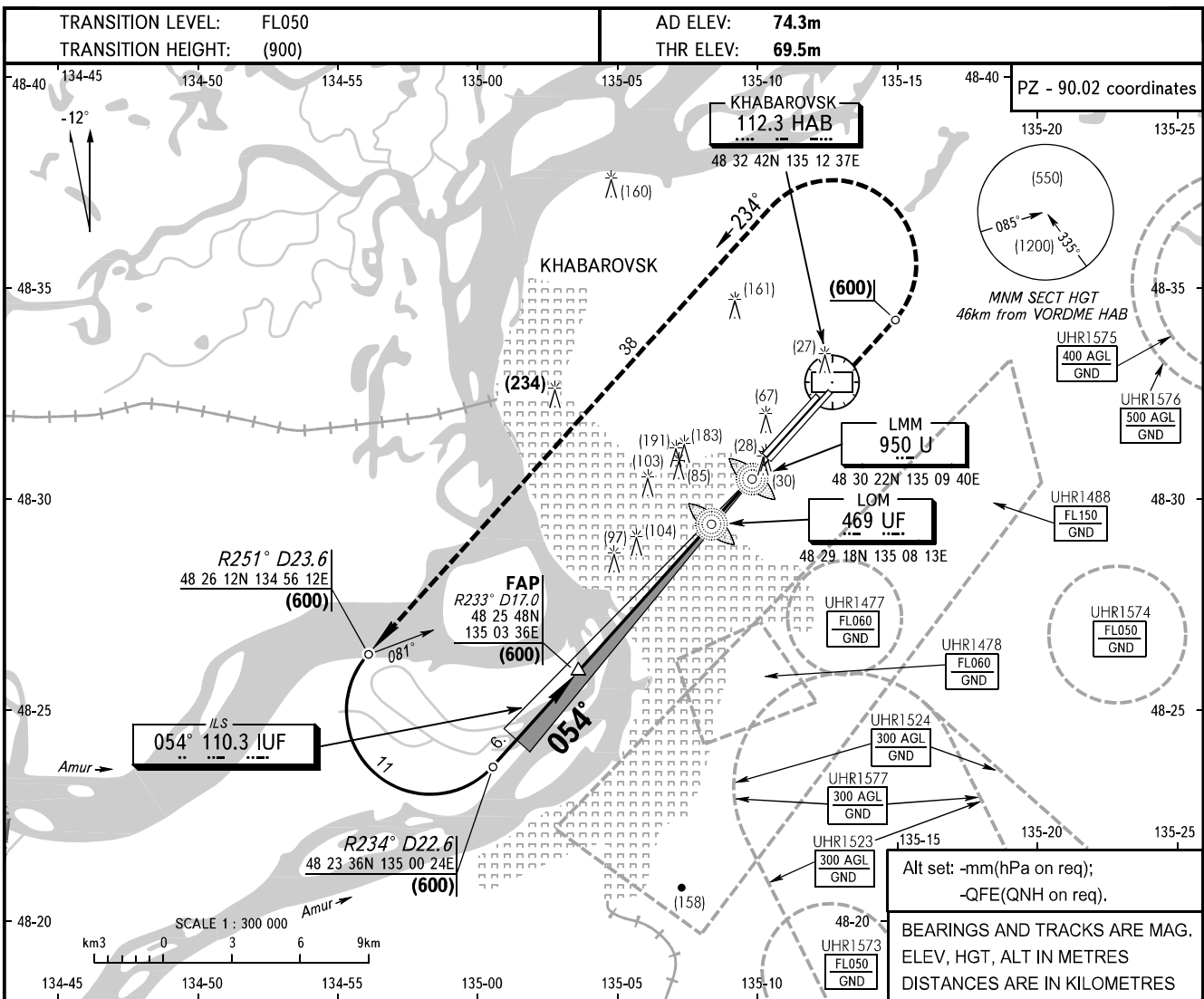


**INSTRUMENT  
APPROACH  
CHART - ICAO**

APPROACH	<b>125.2 129.3R</b>
RADAR	<b>120.3</b>
TOWER	<b>119.3</b>
	<b>121.8 By ATC</b>

**KHABAROVSK, RUSSIA**  
NOVY  
ILS, PAR, 2 NDB, NDB RWY 05R



OCA/H		A	B	C	D
Straight-in	<b>CAT I</b>	116(46)	119(49)	122(52)	126(56)
	<b>PAR</b>	137(67)	140(70)	143(73)	146(76)
Approach	<b>2 NDB</b>	203(133)	203(133)	203(133)	203(133)
	<b>NDB(LOM)</b>	230(160)	230(160)	230(160)	230(160)
	<b>NDB(LMM)</b>	291(221)	291(221)	291(221)	291(221)

**WARNING**  
During PAR approach the distance from touchdown (300m from RWY beginning) to ACFT shall be determined by PAR.

GROUND SPEED	km/h	150	180	210	240	270	300	330	360	390	420	450
LOM-THR 3940m	min:sec	1.35	1.19	1.08	0.59	0.52	0.47	0.43	0.39	0.37	0.34	0.32
RATE OF DESCENT (Grad 4.7%)	m/s	2.0	2.4	2.7	3.1	3.5	3.9	4.3	4.7	5.1	5.5	5.9