

STANDARD ARRIVAL CHART  
INSTRUMENT (STAR) - ICAO

MAGADAN, RUSSIA

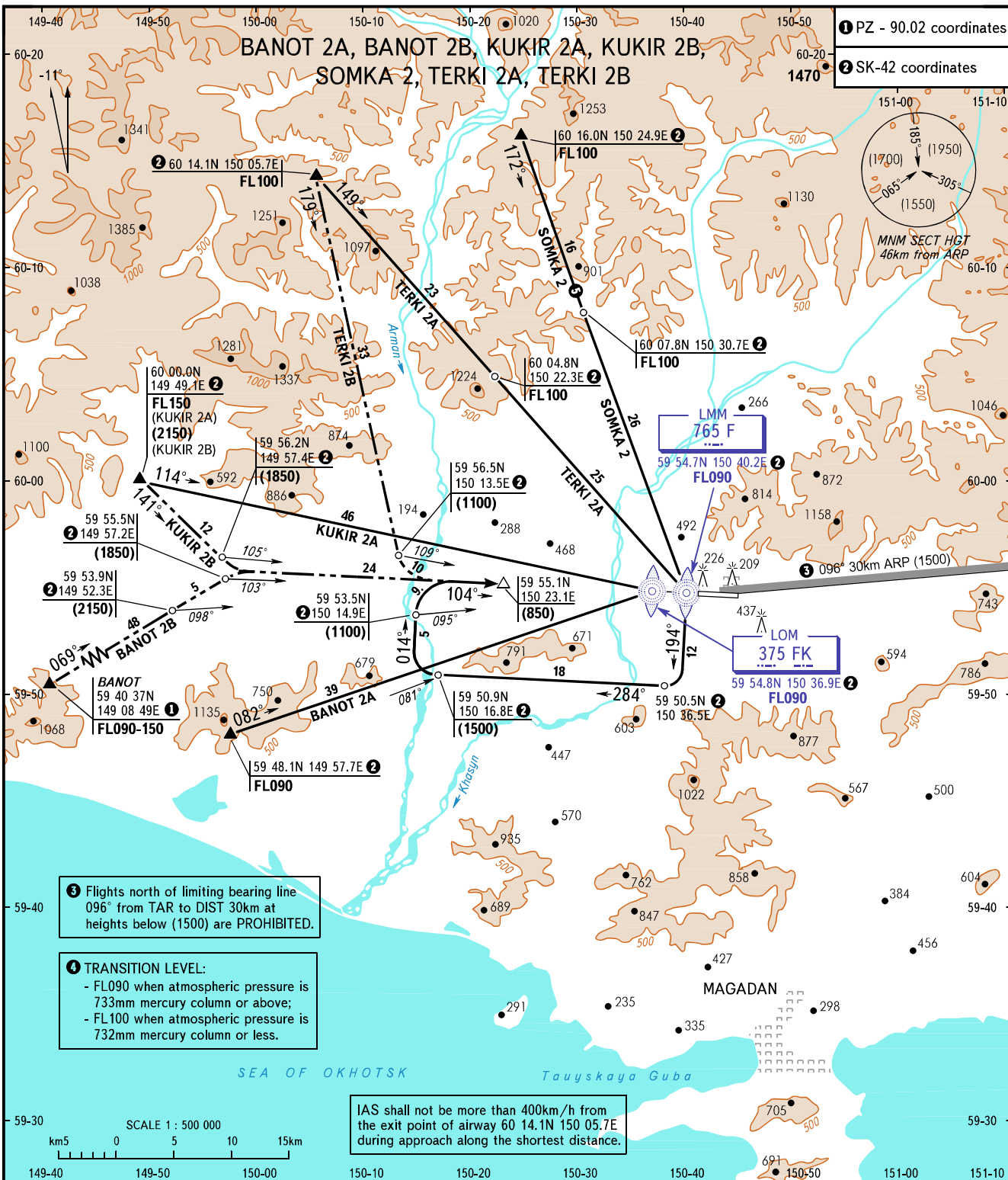
SOKOL

RWY 10

TRANSITION  
LEVEL : **4**

**1** PZ - 90.02 coordinates

**2** SK-42 coordinates



**3** Flights north of limiting bearing line 096° from TAR to DIST 30km at heights below (1500) are PROHIBITED.

**4** TRANSITION LEVEL:  
- FL090 when atmospheric pressure is 733mm mercury column or above;  
- FL100 when atmospheric pressure is 732mm mercury column or less.

IAS shall not be more than 400km/h from the exit point of airway 60 14.1N 150 05.7E during approach along the shortest distance.

APPROACH TOWER **119.300**  
**120.800**

**5** Only for Russian users of airspace.  
**WARNING**  
In approach area transfer of control line to Tower controller is the final turn area on final not further than 20km from RWY THR to the moment of RWY vacaton and from the moment of RWY vacaton.

BEARINGS AND TRACKS ARE MAGNETIC  
ALTITUDES, HEIGHTS AND ELEVATIONS ARE IN METRES  
DISTANCES ARE IN KILOMETRES

CHANGE: KUKIR 2A