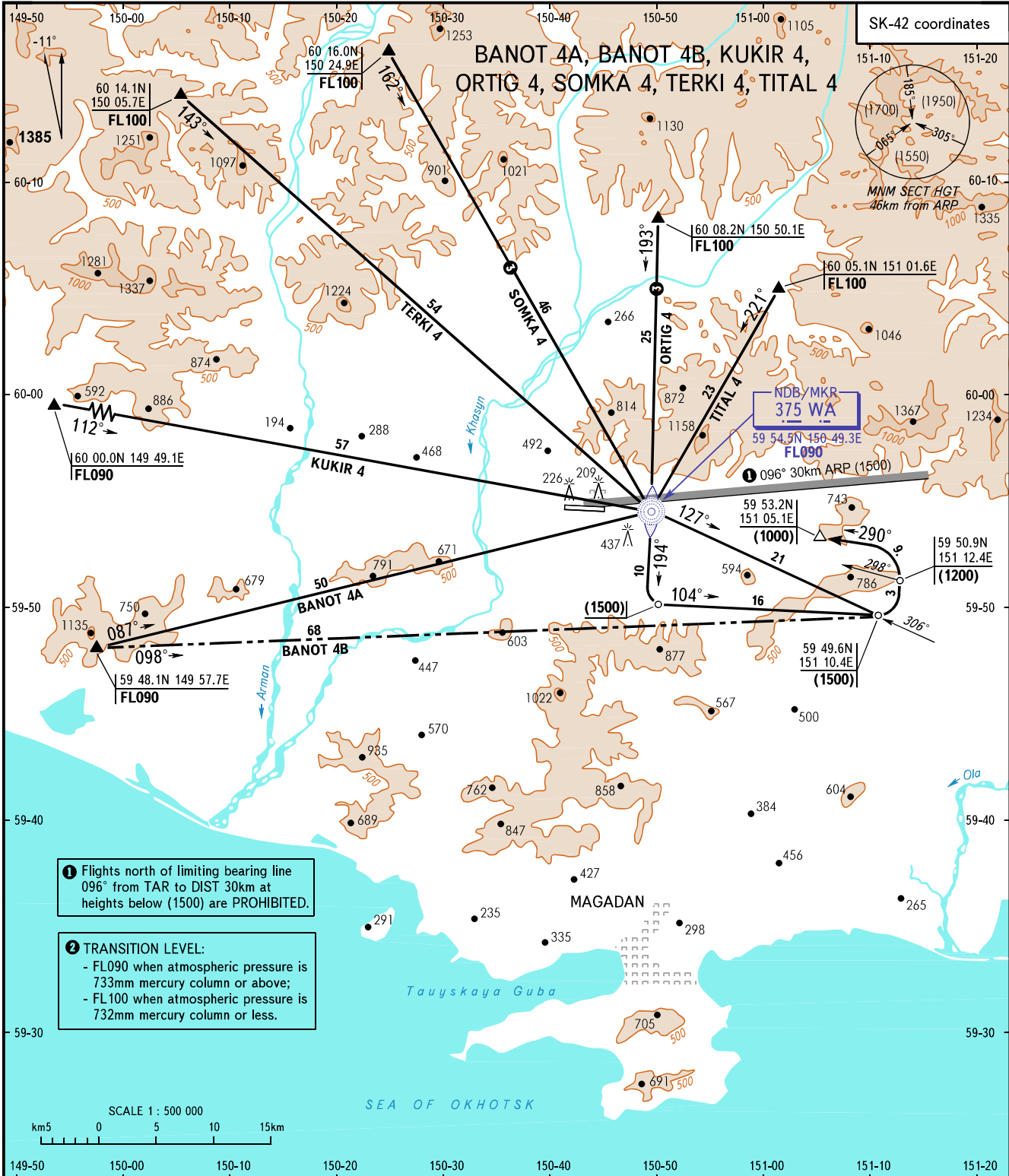


STANDARD ARRIVAL CHART
INSTRUMENT (STAR) - ICAO

MAGADAN, RUSSIA
SOKOL
RWY 28

TRANSITION
LEVEL : ②



① Flights north of limiting bearing line 096° from TAR to DIST 30km at heights below (1500) are PROHIBITED.

② TRANSITION LEVEL:
- FL090 when atmospheric pressure is 733mm mercury column or above;
- FL100 when atmospheric pressure is 732mm mercury column or less.

APPROACH 119.300
TOWER 120.800

③ Only for Russian users of airspace.

WARNING
In approach area transfer of control line to Tower controller is the final turn area on final not further than 20km from RWY THR to the moment of RWY vacation and from the moment of RWY vacation.

BEARINGS AND TRACKS ARE MAGNETIC
ALTITUDES, HEIGHTS AND ELEVATIONS ARE IN METRES
DISTANCES ARE IN KILOMETRES

CHANGE: COORD FAF