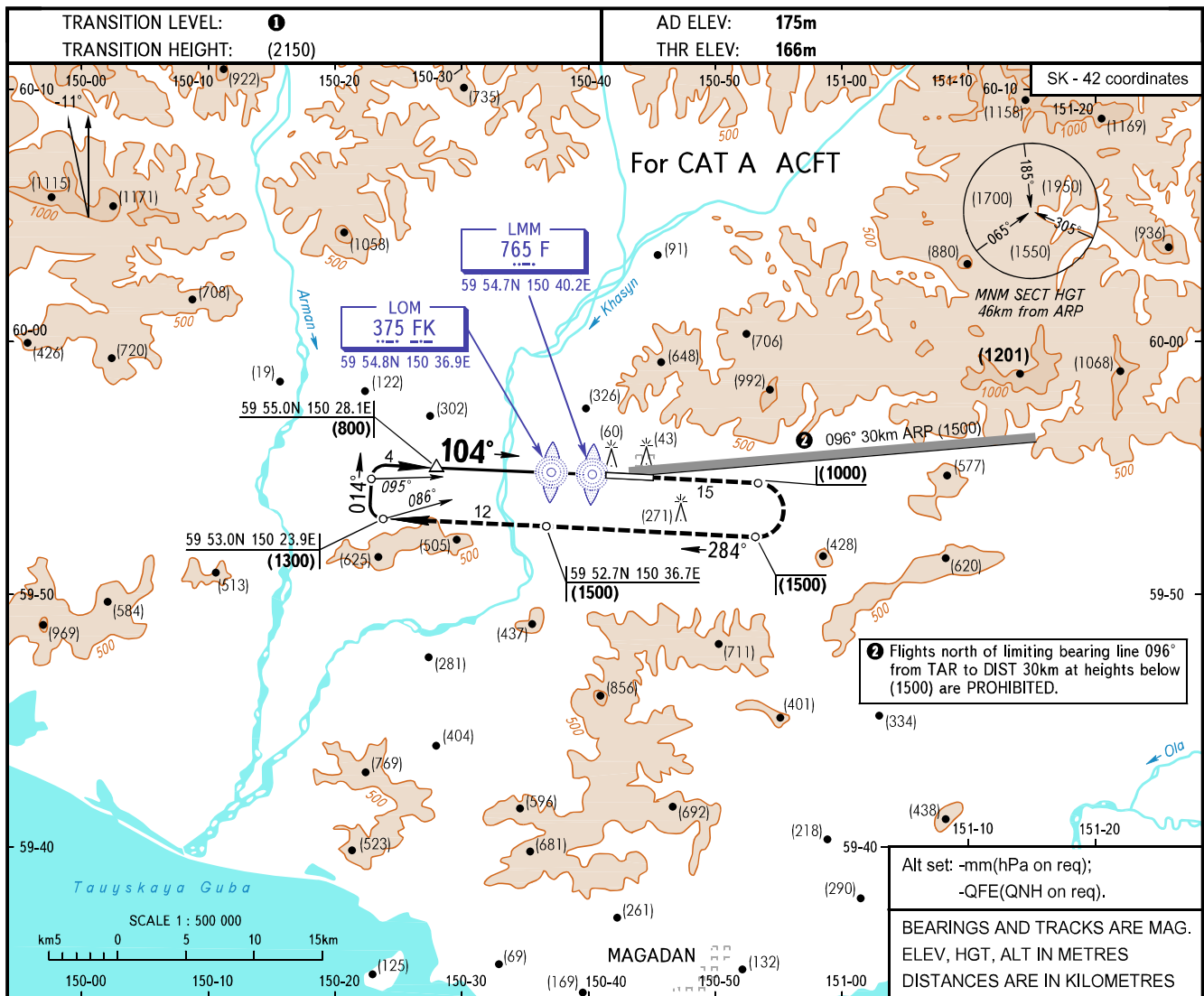


INSTRUMENT  
APPROACH  
CHART - ICAO

MAGADAN, RUSSIA  
SOKOL  
2 NDB, NDB RWY 10

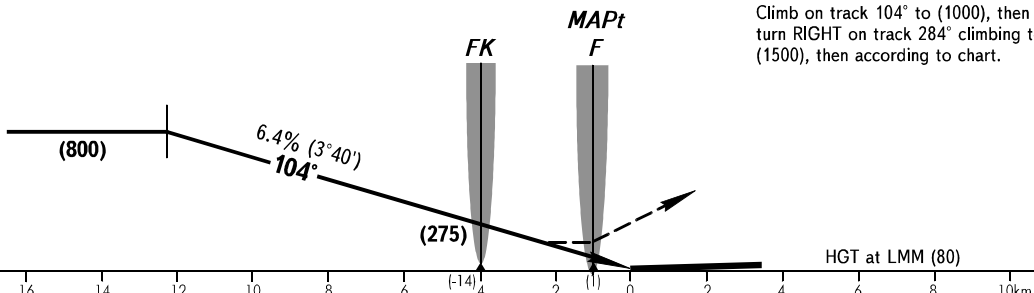
APPROACH 119.300  
TOWER 120.800



② Flights north of limiting bearing line 096° from TAR to DIST 30km at heights below (1500) are PROHIBITED.

Alt set: -mm(hPa on req);  
-QFE(QNH on req).  
BEARINGS AND TRACKS ARE MAG.  
ELEV, HGT, ALT IN METRES  
DISTANCES ARE IN KILOMETRES

**MISSED APPROACH**  
Climb on track 104° to (1000), then turn RIGHT on track 284° climbing to (1500), then according to chart.



OCA/H		A	B	C	D
Straight-in	2 NDB	619(453)			
	NDB(LOM)	619(453)			
	NDB(LMM)	619(453)			
Approach					

① TRANSITION LEVEL:  
- FL090 when atmospheric pressure is 733mm mercury column or above;  
- FL100 when atmospheric pressure is 732mm mercury column or less.  
**WARNING**  
Heavy turbulence with down-draughts and wind shear may be expected on final.

GROUND SPEED	km/h	120	150	180	210	240	270	300		
LOM-THR 4000m	min:sec	2.00	1.36	1.20	1.09	1.00	0.53	0.48		
RATE OF DESCENT	m/s	2.2	2.7	3.2	3.7	4.3	4.9	5.4		