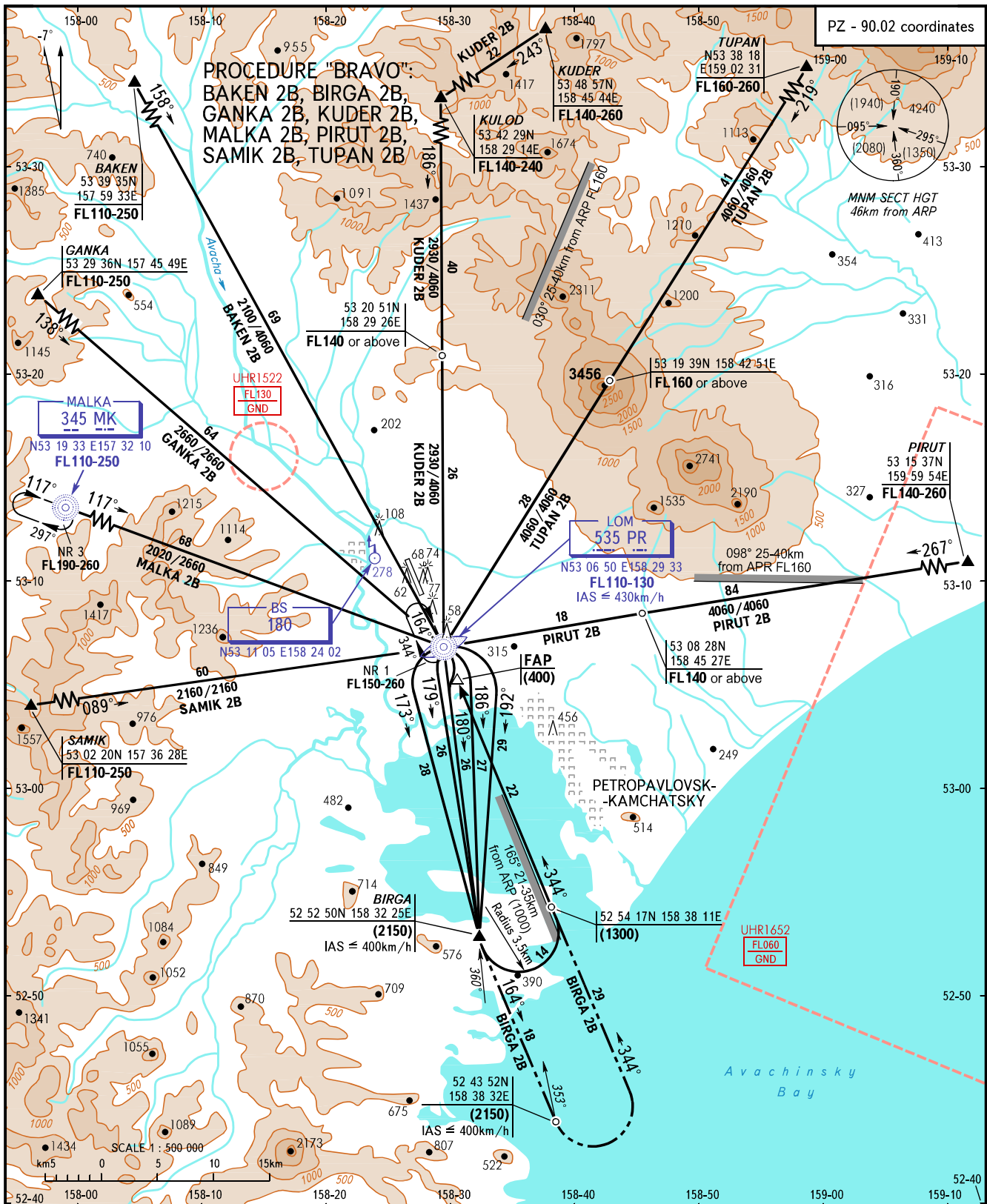


STANDARD ARRIVAL CHART
INSTRUMENT (STAR) - ICAO

TRANSITION
LEVEL: **1**

PETROPAVLOVSK-KAMCHATSKY, RUSSIA
YELIZOVO
RWY 34R



- 1 TRANSITION LEVEL:**
 - FL090 when atmospheric pressure is 756mm mercury column or above;
 - FL100 when atmospheric pressure is less than 756mm and is 729mm or above;
 - FL110 when atmospheric pressure is less than 729mm mercury column.

WARNING
 Holding area NR 1 over LOM PR 535. Inbound leg R164°. Right hand traffic circuit. FL - as instructed by ATC.

BEARINGS AND TRACKS ARE MAGNETIC
 ALTITUDES, HEIGHTS AND ELEVATIONS ARE IN METRES
 DISTANCES ARE IN KILOMETRES