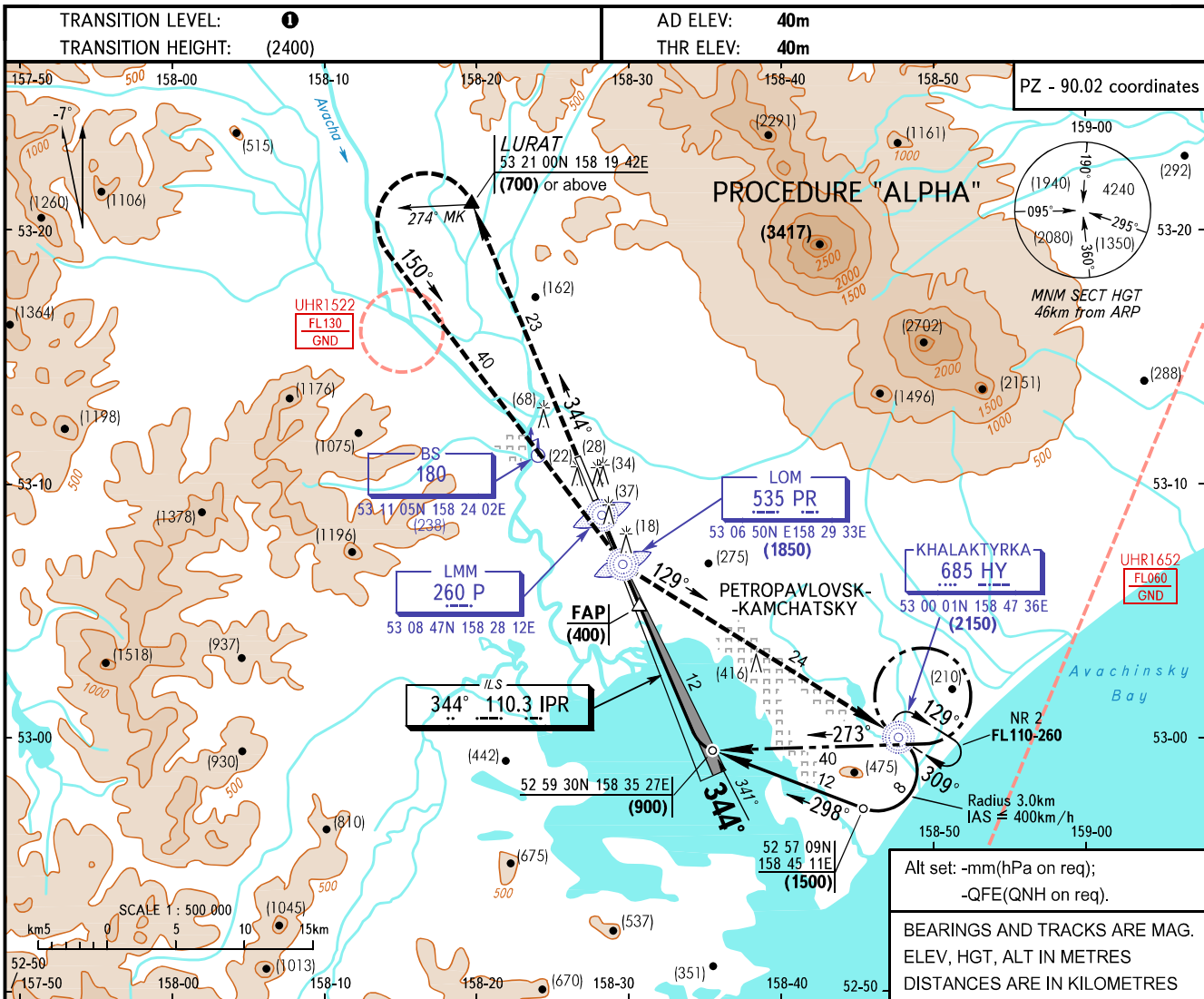


**INSTRUMENT
APPROACH
CHART - ICAO**

START	118.100
KRUG	119.400

**PETROPAVLOVSK-KAMCHATSKY, RUSSIA
YELIZOVO
ILS RWY 34R**



MISSED APPROACH
Climb on track 344° to (700) or above at GEO point 53 21 00N 158 19 42E, turn LEFT onto track 150° climbing to (1850) at LOM, then proceed on track 129° to KHALAKTYRKA NDB climbing to (2150), then proceed according to approach pattern or into HLDG area NR 2.
Report ATC in case of missed approach according to "BRAVO-1" or "BRAVO-2" procedure.

HGT at LMM (70)

km6 5 4 3 2 1 0 1 2 3 4 5 6 7 8 9 10km

OCA/H		A	B	C	D								
Straight-in	ILS	84(44)	86(46)	90(50)	99(59)								
	Approach												
GROUND SPEED		km/h	120	150	180	210	240	270	300	330	360	390	420
RATE OF DESCENT		m/s	1.6	2.0	2.4	2.8	3.1	3.5	3.9	4.4	4.7	5.1	5.6

TRANSITION LEVEL:
- FL090 when atmospheric pressure is 756mm mercury column or above;
- FL100 when atmospheric pressure is less than 756mm and is 729mm or above;
- FL110 when atmospheric pressure is less than 729mm mercury column.

WARNING
Missed approach climb gradient is not less than 3.2% till passing LOM.

CHANGE: New chart