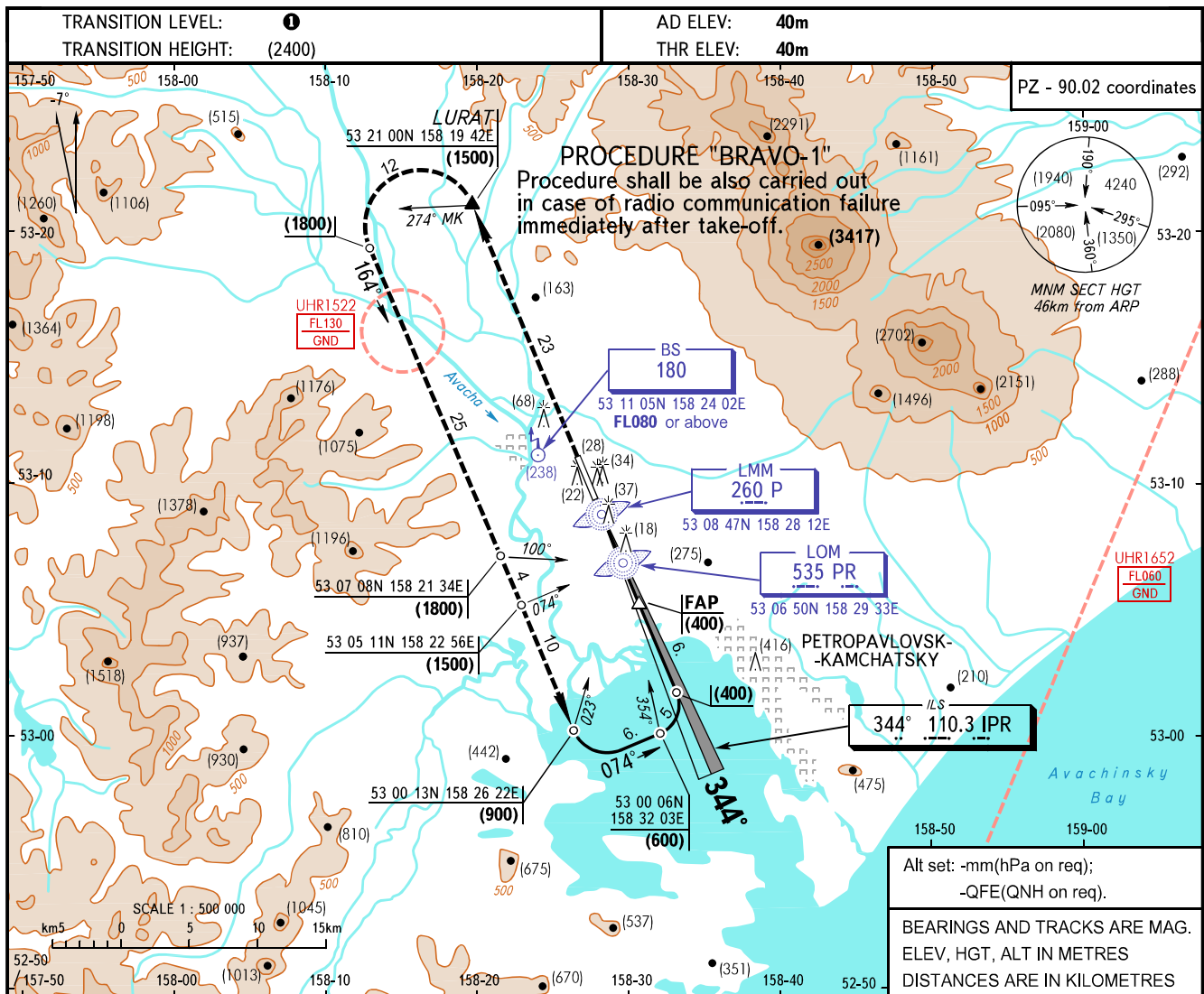


**INSTRUMENT
APPROACH
CHART - ICAO**

START	118.100
KRUG	119.400

**PETROPAVLOVSK-KAMCHATSKY, RUSSIA
YELIZOVO
ILS RWY 34R**

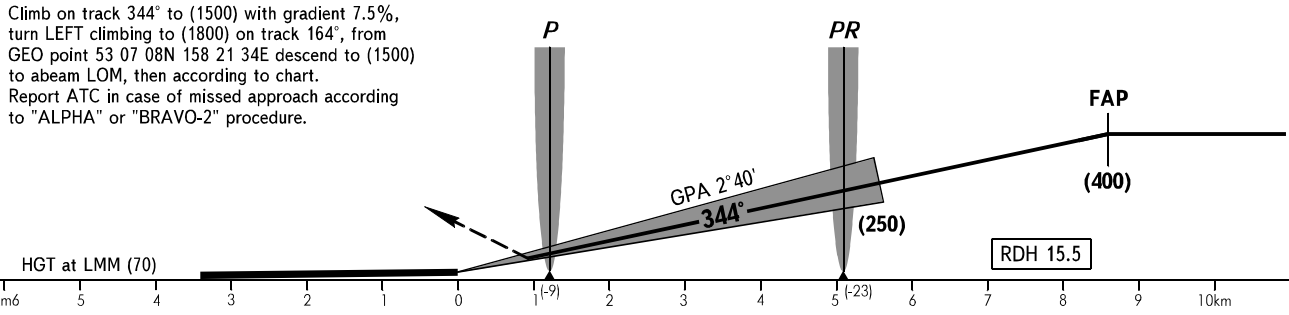


Alt set: -mm(hPa on req);
-QFE(QNH on req).

BEARINGS AND TRACKS ARE MAG.
ELEV, HGT, ALT IN METRES
DISTANCES ARE IN KILOMETRES

MISSED APPROACH

Climb on track 344° to (1500) with gradient 7.5%, turn LEFT climbing to (1800) on track 164°, from GEO point 53 07 08N 158 21 34E descend to (1500) to abeam LOM, then according to chart. Report ATC in case of missed approach according to "ALPHA" or "BRAVO-2" procedure.



OCA/H		A	B	C	D								
Straight-in	ILS	84(44)	86(46)	90(50)	99(59)								
	Approach												
GROUND SPEED		km/h	120	150	180	210	240	270	300	330	360	390	420
RATE OF DESCENT		m/s	1.6	2.0	2.4	2.8	3.1	3.5	3.9	4.4	4.7	5.1	5.6

1 TRANSITION LEVEL:
- FL090 when atmospheric pressure is 756mm mercury column or above;
- FL100 when atmospheric pressure is less than 756mm and is 729mm or above;
- FL110 when atmospheric pressure is less than 729mm mercury column.