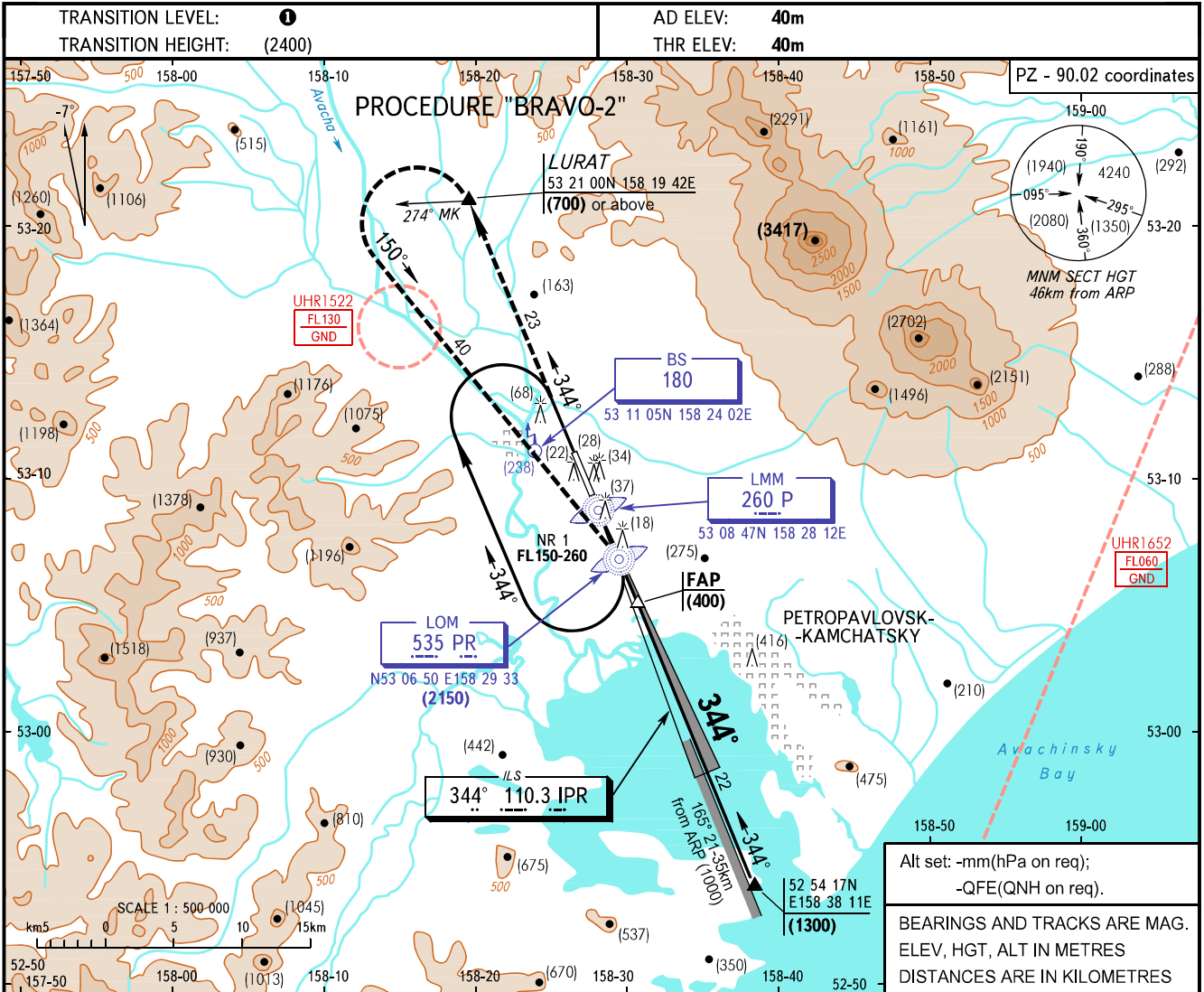


**INSTRUMENT
APPROACH
CHART - ICAO**

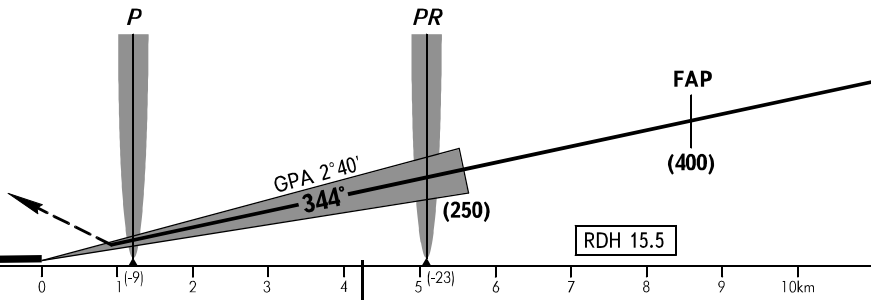
START	118.100
KRUG	119.400

**PETROPAVLOVSK-KAMCHATSKY, RUSSIA
YELIZOVO
ILS RWY 34R**



MISSED APPROACH

Climb on track 344° to (700) or above at GEO point 53 21 00N 158 19 42E, turn LEFT on track 150° climbing to (2150) at LOM, then proceed into holding area NR 1.
Report ATC in case of missed approach according to "ALPHA" or "BRAVO-1" procedure.



OCA/H		A	B	C	D							
Straight-in	ILS	84(44)	86(46)	90(50)	99(59)							
	Approach											
GROUND SPEED	km/h	120	150	180	210	240	270	300	330	360	390	420
RATE OF DESCENT	m/s	1.6	2.0	2.4	2.8	3.1	3.5	3.9	4.4	4.7	5.1	5.6

1 TRANSITION LEVEL:
 - FL090 when atmospheric pressure is 756mm mercury column or above;
 - FL100 when atmospheric pressure is less than 756mm and is 729mm or above;
 - FL110 when atmospheric pressure is less than 729mm mercury column.

WARNING
 Missed approach climb gradient is not less than 3.4% till passing LOM.

CHANGE: New chart