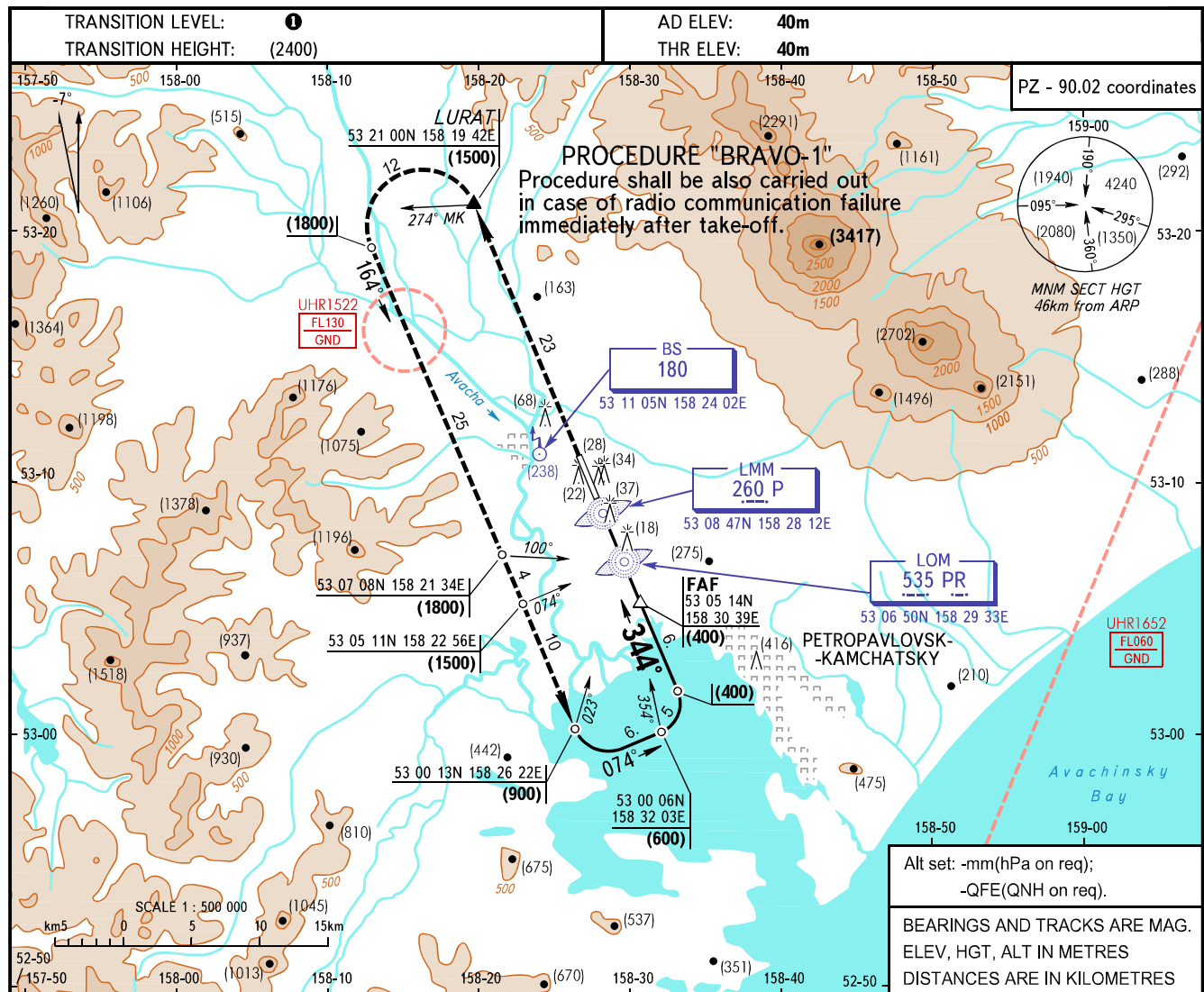


**INSTRUMENT
APPROACH
CHART - ICAO**

START	118.100
KRUG	119.400

**PETROPAVLOVSK-KAMCHATSKY, RUSSIA
YELIZOVO
2 NDB, NDB RWY 34R**



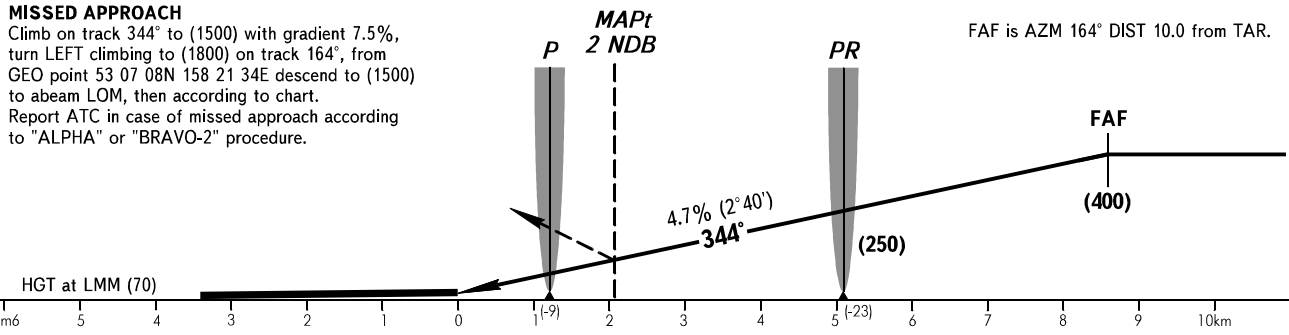
All set: -mm(hPa on req);
-QFE(QNH on req).

BEARINGS AND TRACKS ARE MAG.
ELEV, HGT, ALT IN METRES
DISTANCES ARE IN KILOMETRES

MISSED APPROACH

Climb on track 344° to (1500) with gradient 7.5%, turn LEFT climbing to (1800) on track 164°, from GEO point 53 07 08N 158 21 34E descend to (1500) to abeam LOM, then according to chart. Report ATC in case of missed approach according to "ALPHA" or "BRAVO-2" procedure.

FAF is AZM 164° DIST 10.0 from TAR.



		OCA/H	A	B	C	D
Straight-in	2 NDB	With FAF	149(109)	149(109)	149(109)	149(109)
		W/O FAF	340(300)	340(300)	340(300)	340(300)
Approach	NDB(LOM)	With FAF	180(140)	180(140)	180(140)	180(140)
		W/O FAF	361(321)	361(321)	361(321)	361(321)

- 1 TRANSITION LEVEL:**
- FL090 when atmospheric pressure is 756mm mercury column or above;
 - FL100 when atmospheric pressure is less than 756mm and is 729mm or above;
 - FL110 when atmospheric pressure is less than 729mm mercury column.

GROUND SPEED	km/h	120	150	180	210	240	270	300	330	360	390	420
LOM-MAPt 2 NDB 2880m	min:sec	1.26	1.09	0.57	0.49	0.43	0.38	0.35	0.32	0.29	0.27	0.25
RATE OF DESCENT	m/s	1.6	2.0	2.4	2.8	3.1	3.5	3.9	4.4	4.7	5.1	5.6