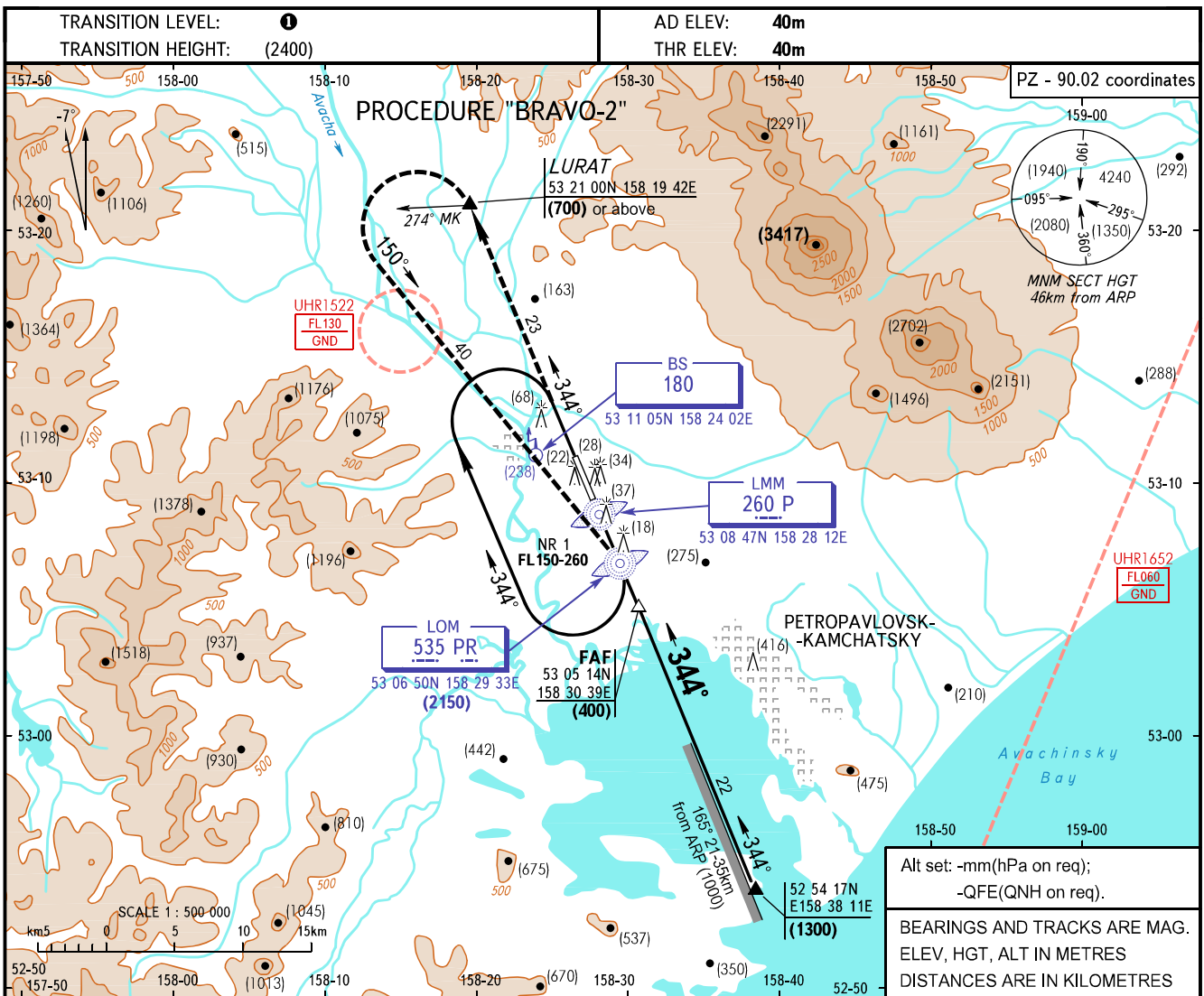


**INSTRUMENT
APPROACH
CHART - ICAO**

START	118.100
KRUG	119.400

**PETROPAVLOVSK-KAMCHATSKY, RUSSIA
YELIZOVO
2 NDB, NDB RWY 34R**

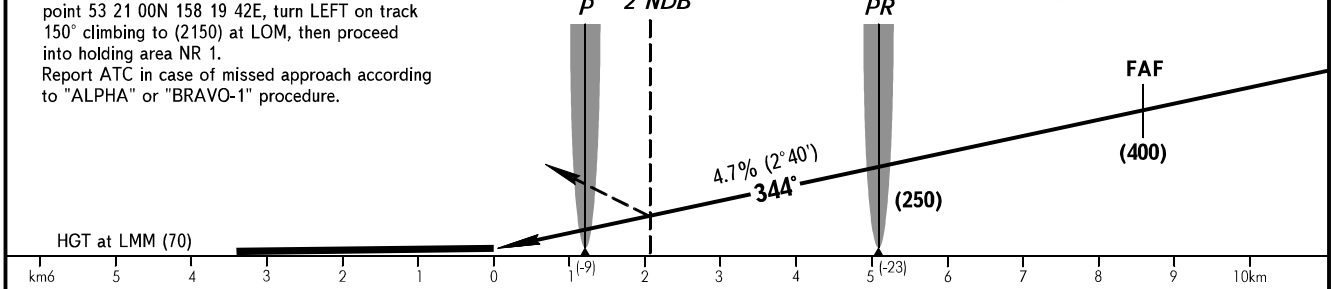


MISSED APPROACH

Climb on track 344° to (700) or above at GEO point 53 21 00N 158 19 42E, turn LEFT on track 150° climbing to (2150) at LOM, then proceed into holding area NR 1.
Report ATC in case of missed approach according to "ALPHA" or "BRAVO-1" procedure.

**MAPt
2 NDB**

FAF is AZM 164° DIST 10.0 from TAR.



OCA/H		A	B	C	D	
Straight-in	2 NDB	With FAF	149(109)	149(109)	149(109)	149(109)
		W/O FAF	340(300)	340(300)	340(300)	340(300)
Approach	NDB(LOM)	With FAF	180(140)	180(140)	180(140)	180(140)
		W/O FAF	361(321)	361(321)	361(321)	361(321)

- TRANSITION LEVEL:**
- FL090 when atmospheric pressure is 756mm mercury column or above;
 - FL100 when atmospheric pressure is less than 756mm and is 729mm or above;
 - FL110 when atmospheric pressure is less than 729mm mercury column.

WARNING

Missed approach climb gradient is not less than 3.4% till passing LOM.

GROUND SPEED	km/h	120	150	180	210	240	270	300	330	360	390	420
LOM-MAPt 2 NDB 2880m	min:sec	1.26	1.09	0.57	0.49	0.43	0.38	0.35	0.32	0.29	0.27	0.25
RATE OF DESCENT	m/s	1.6	2.0	2.4	2.8	3.1	3.5	3.9	4.4	4.7	5.1	5.6

CHANGE: New chart