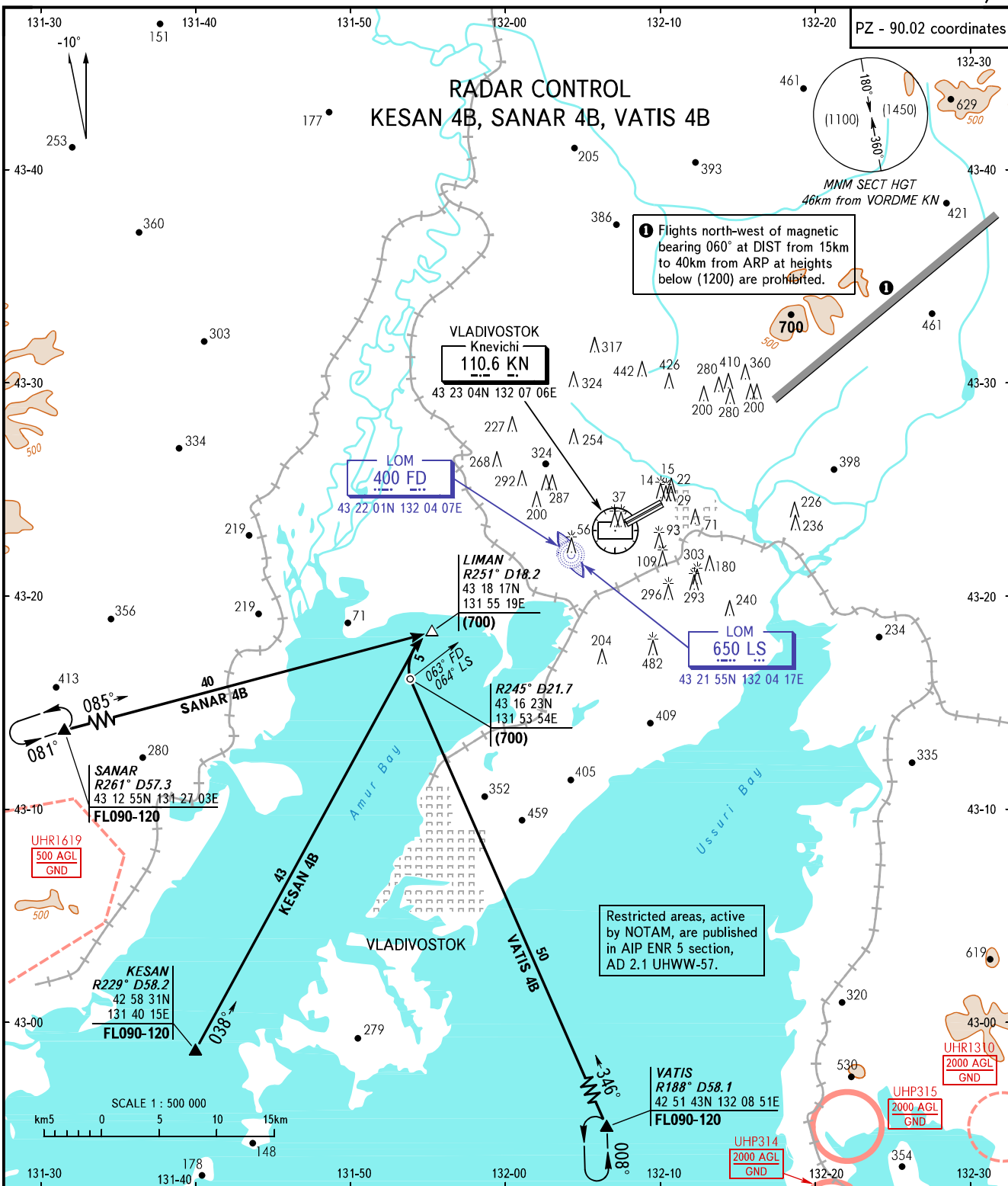


STANDARD ARRIVAL CHART
INSTRUMENT (STAR) - ICAO

VLADIVOSTOK, RUSSIA
KNEVICHY
RWY 07L/R

TRANSITION
LEVEL : **FL080**



RADAR 119.5
TOWER 126.0

WARNING
Crossing altitudes for exit points of AWY are as directed by ATS unit.

BEARINGS AND TRACKS ARE MAGNETIC
ALTITUDES, HEIGHTS AND ELEVATIONS ARE IN METRES
DISTANCES ARE IN KILOMETRES

CHANGE: P and R areas