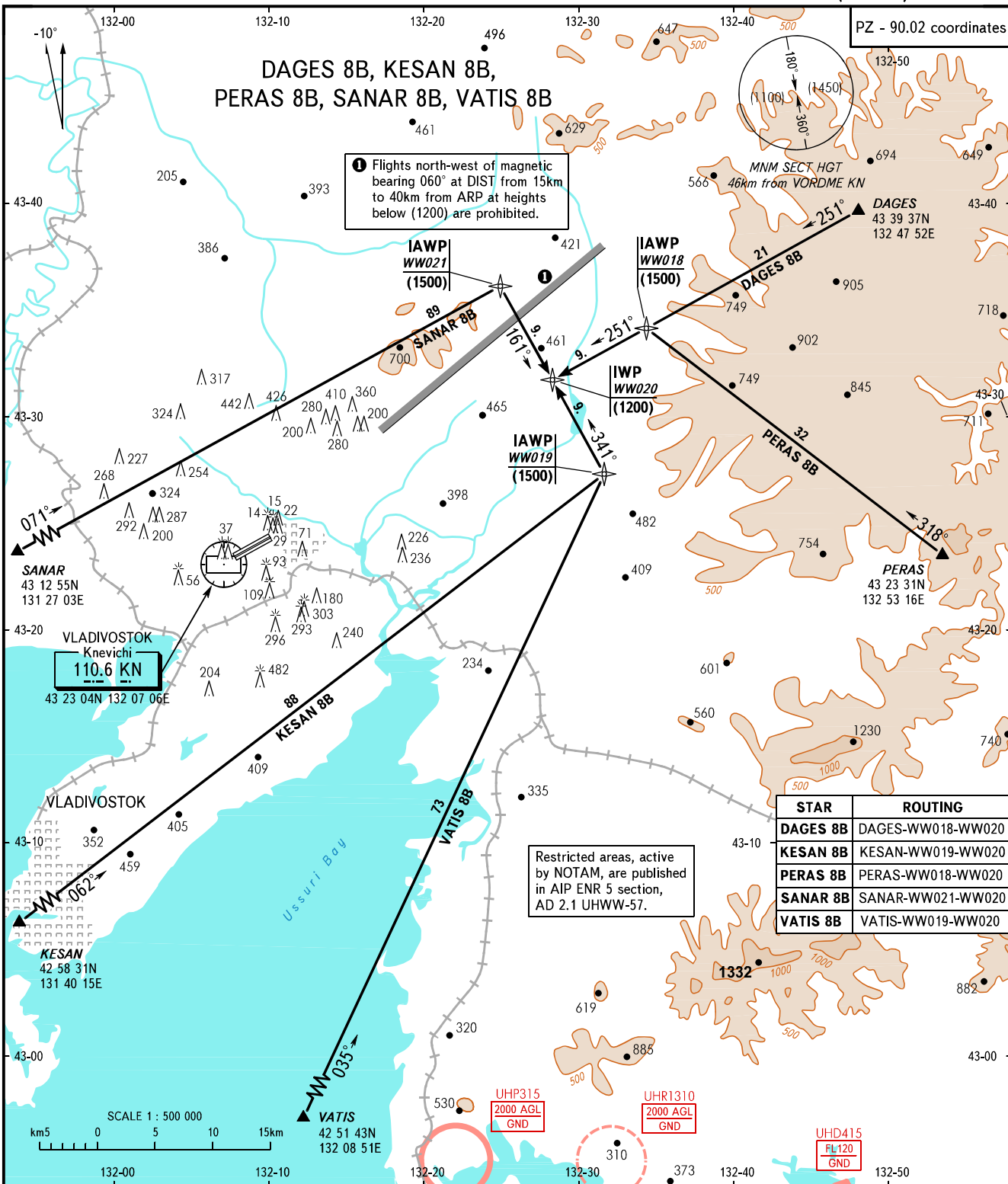


STANDARD ARRIVAL CHART
INSTRUMENT (STAR) - ICAO

TRANSITION
LEVEL: **FL080**

VLADIVOSTOK, RUSSIA
KNEVICHY
RNAV (GNSS) RWY 25R



RADAR TOWER **119.5**
126.0

WARNING
Crossing altitudes for exit points of AWY are as directed by ATS unit.

BEARINGS AND TRACKS ARE MAGNETIC
ALTITUDES, HEIGHTS AND ELEVATIONS ARE IN METRES
DISTANCES ARE IN KILOMETRES