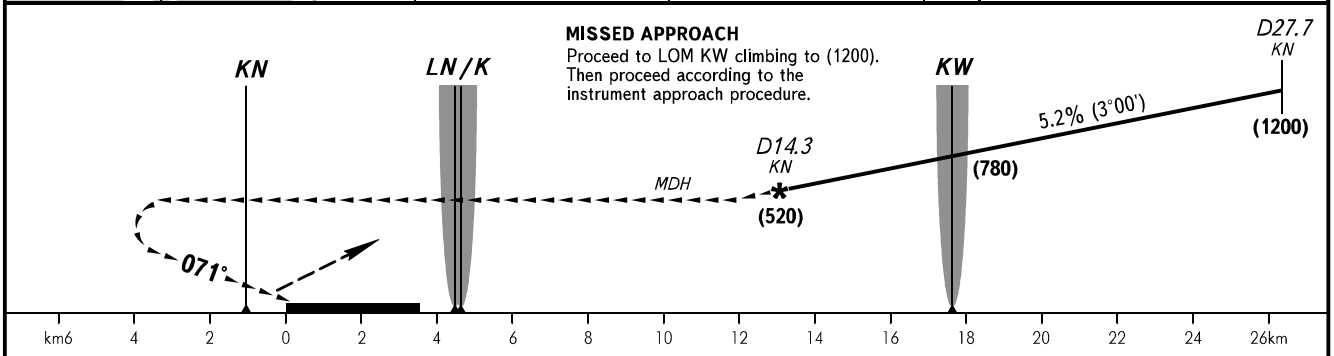
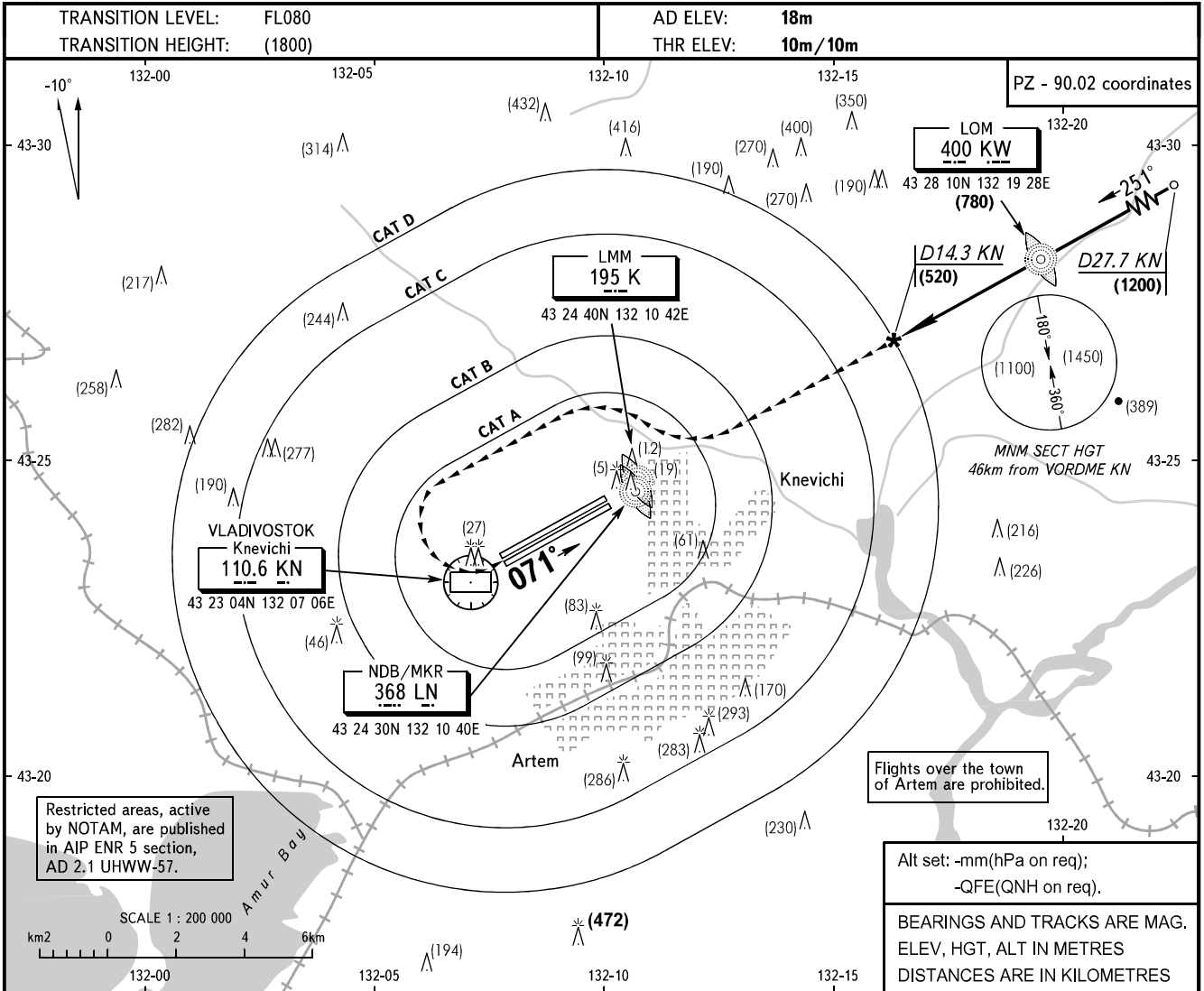


**VISUAL
APPROACH
CHART - ICAO**

RADAR	119.500
TOWER	126.000

**VLADIVOSTOK, RUSSIA
KNEVICH I
CIRCLING RWY 07L/07R**



OCA/H		A	B	C	D	WARNING: 1. A visual approach for RWY 07L/07R shall be carried out according to the instrument approach procedure for RWY 25R/25L descending to MDH. Then a visual approach shall be carried out within the established visual manoeuvring areas. 2. The radius of visual manoeuvring (circling) area for ACFT categories is as follows: A - 3100m, B - 4760m, C - 7740m, D - 9630m. 3. When a visual contact with the RWY is not established before passing LMM K/ NDB/MKR LN, then go around according to the instrument approach procedure.
Visual	RWY 07L	160(150)	190(180)	430(420)	430(420)	
	RWY 07R	160(150)	190(180)	430(420)	430(420)	
Manoeuvring (Circling) Area						
ACFT CAT		A	B	C	D	
MET conditions RWY 25L/25R	MDH, m	150	180	420	420	
	Cloud base, m	200	230	520	520	
	Visibility, m	1600	2500	5000	5000	