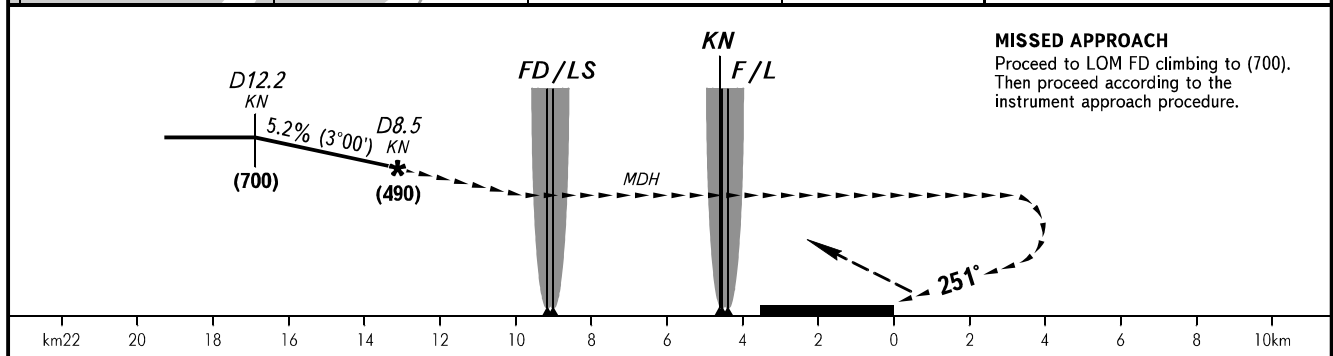
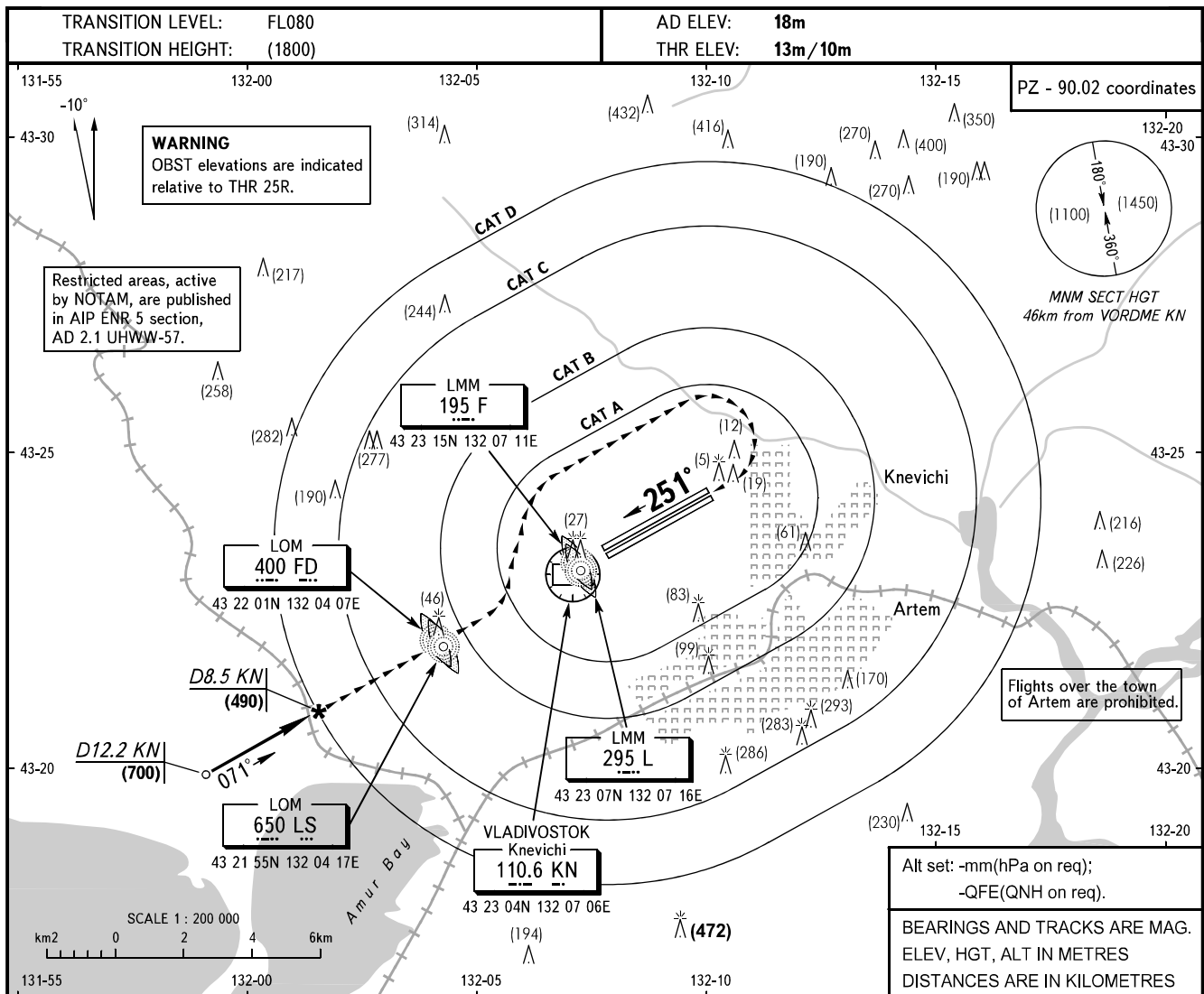


VISUAL  
APPROACH  
CHART - ICAO

RADAR 119.500  
TOWER 126.000

VLADIVOSTOK, RUSSIA  
KNEVICHY  
CIRCLING RWY 25L/25R



OCA/H		A	B	C	D
Visual	RWY 25L	164(150)	194(180)	434(420)	434(420)
	RWY 25R	160(150)	190(180)	430(420)	430(420)
Manoeuvring					
(Circling) Area					
ACFT CAT					
MET conditions RWY 25L/25R	MDH, m	150	180	420	420
	Cloud base, m	200	230	520	520
	Visibility, m	1600	2500	5000	5000

**WARNING:**

- A visual approach for RWY 25L/25R shall be carried out according to the instrument approach procedure for RWY 07R/07L descending to MDH. Then a visual approach shall be carried out within the established visual manoeuvring areas.
- The radius of visual manoeuvring (circling) area for ACFT categories is as follows: A - 3100m, B - 4760m, C - 7740m, D - 9630m.
- When a visual contact with the RWY is not established before passing LOM FD/ LOM LS, then go around according to the instrument approach procedure.

CHANGE: ELEV