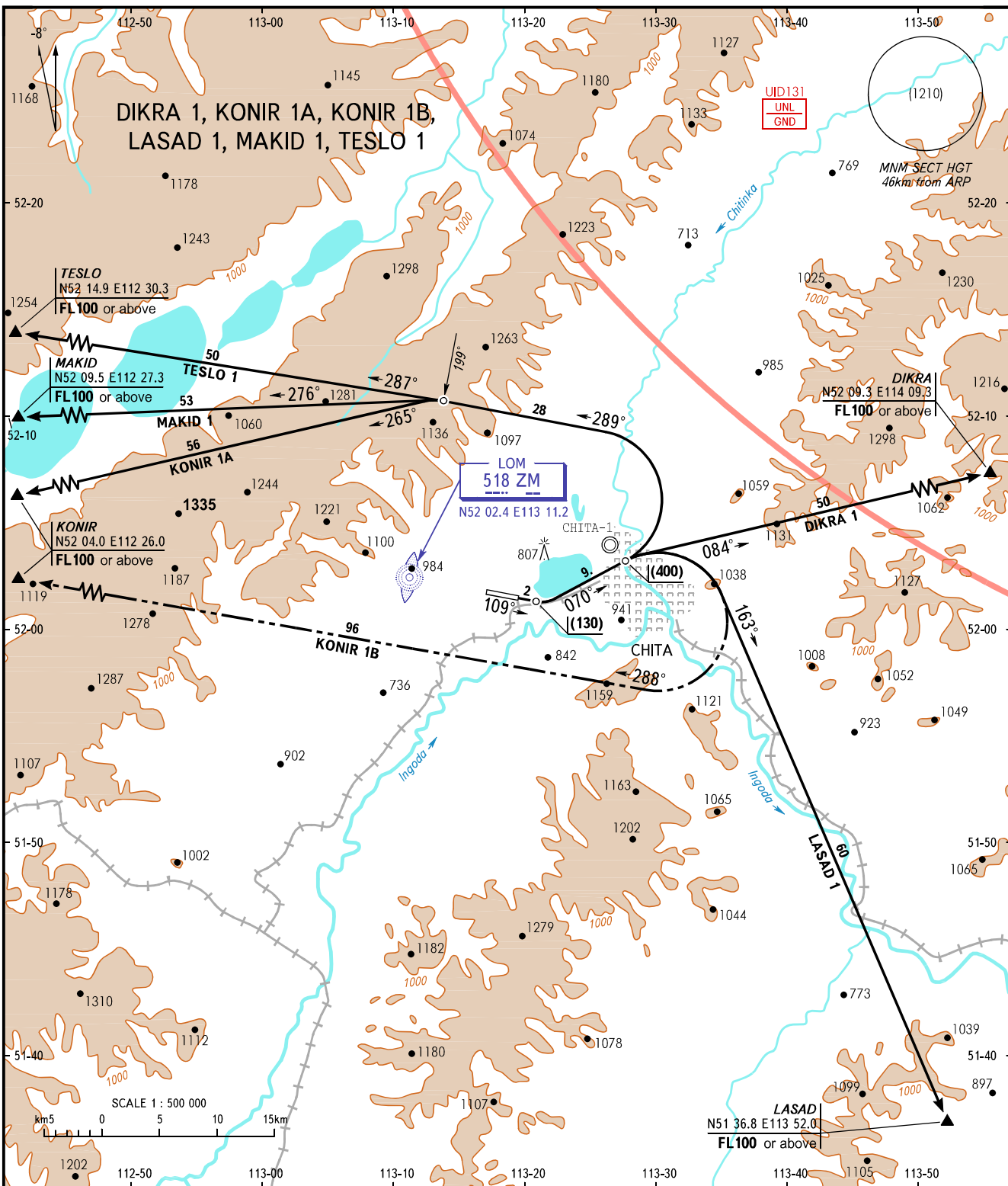


STANDARD DEPARTURE CHART
INSTRUMENT (SID) - ICAO

TRANSITION
HEIGHT : (1850)



TOWER	118.1
RADAR	122.0
CONTROL	135.6

WARNING
There is CHITA/Chita-1 AD left of take-off heading.
Landing heading is 151°/331°.

BEARINGS AND TRACKS ARE MAGNETIC
ALTITUDES, HEIGHTS AND ELEVATIONS ARE IN METRES
DISTANCES ARE IN KILOMETRES

CHANGE: WARNING, FL