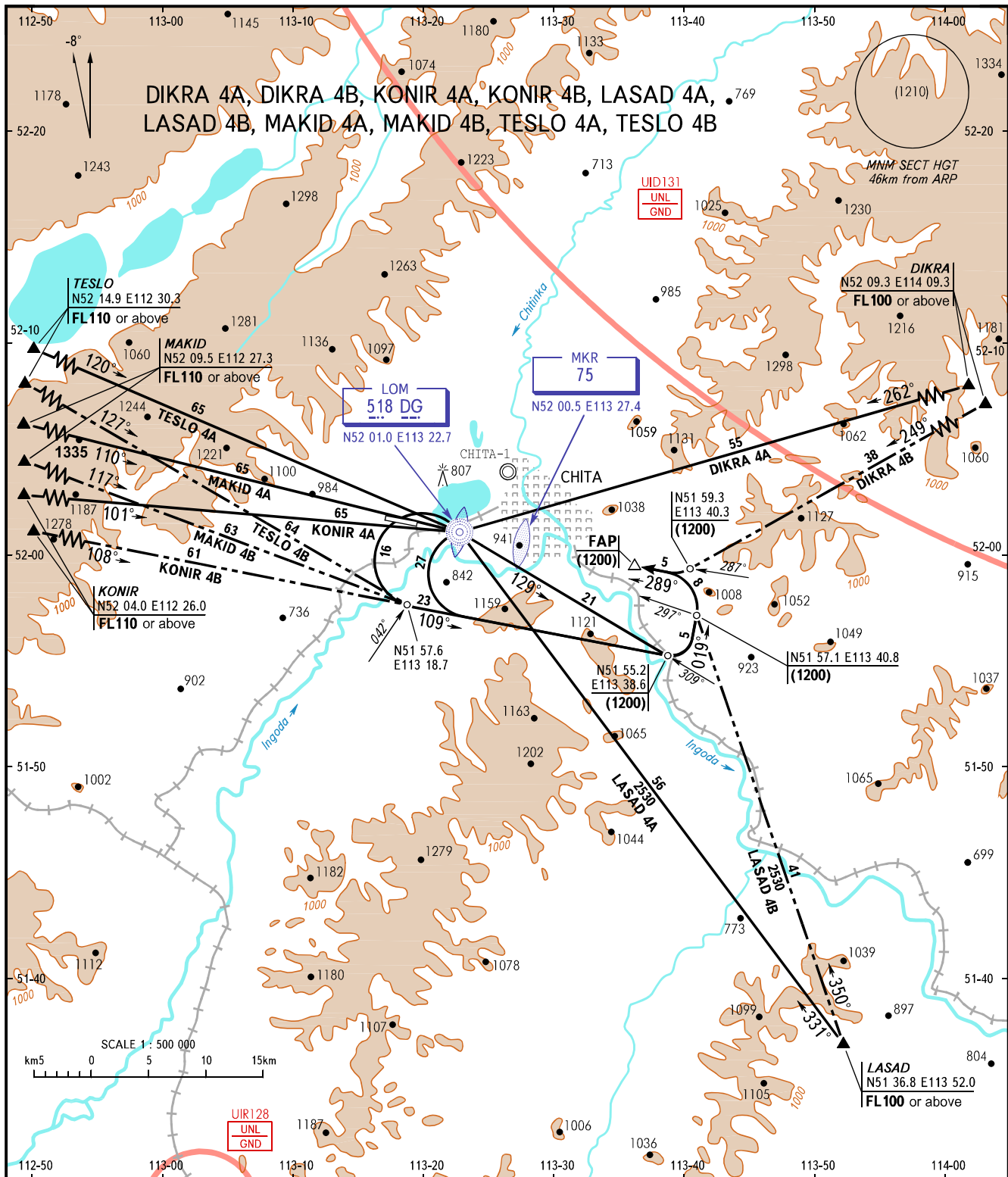


STANDARD ARRIVAL CHART  
INSTRUMENT (STAR) - ICAO

TRANSITION  
LEVEL: **FL100**

DIKRA 4A, DIKRA 4B, KONIR 4A, KONIR 4B, LASAD 4A,  
LASAD 4B, MAKID 4A, MAKID 4B, TESLO 4A, TESLO 4B



RADAR TOWER **122.0**  
**118.1**

**WARNING**  
There is CHITA/Chita-1 AD right of approach heading.  
Landing heading is 151°/331°.

BEARINGS AND TRACKS ARE MAGNETIC  
ALTITUDES, HEIGHTS AND ELEVATIONS ARE IN METRES  
DISTANCES ARE IN KILOMETRES