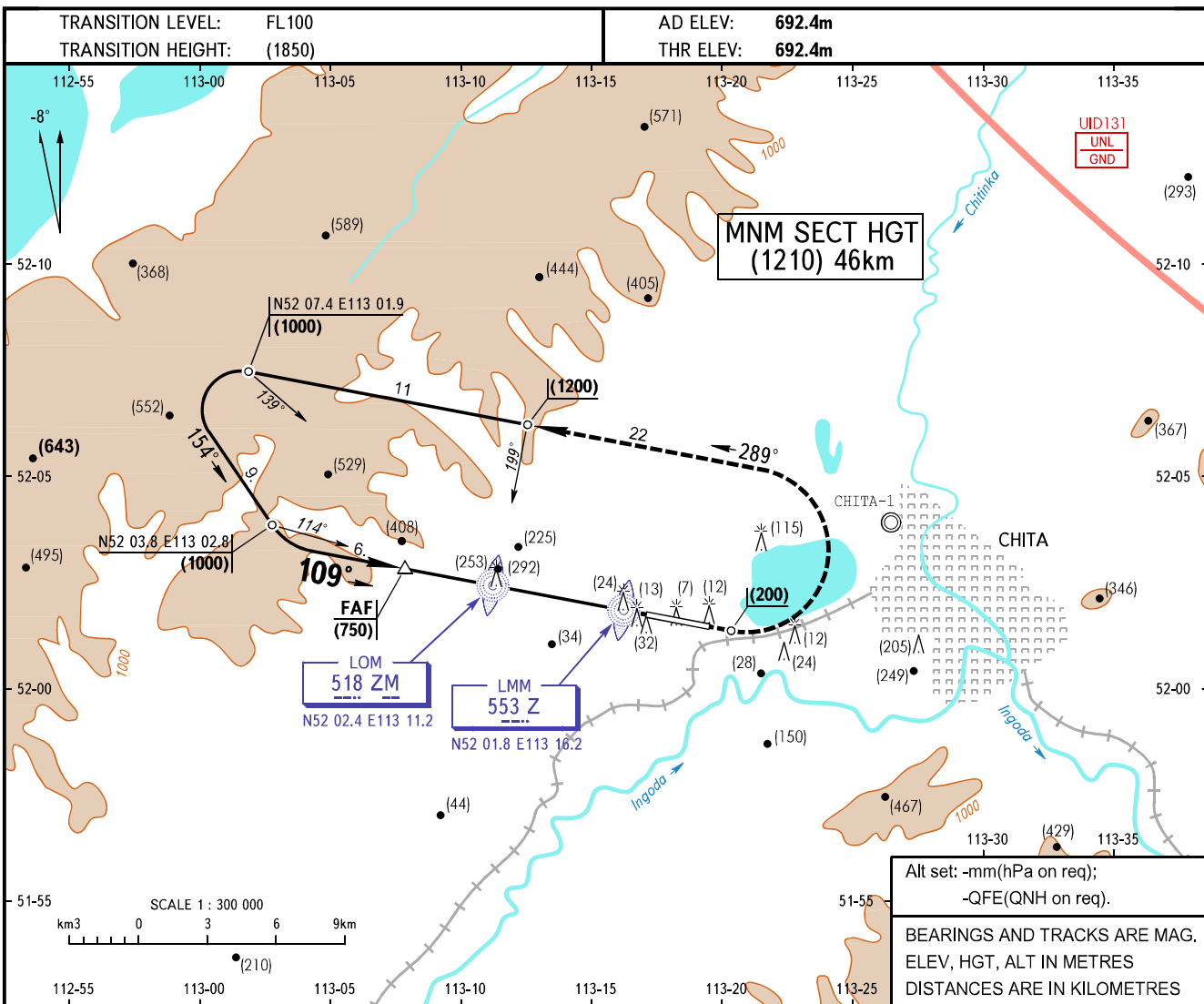


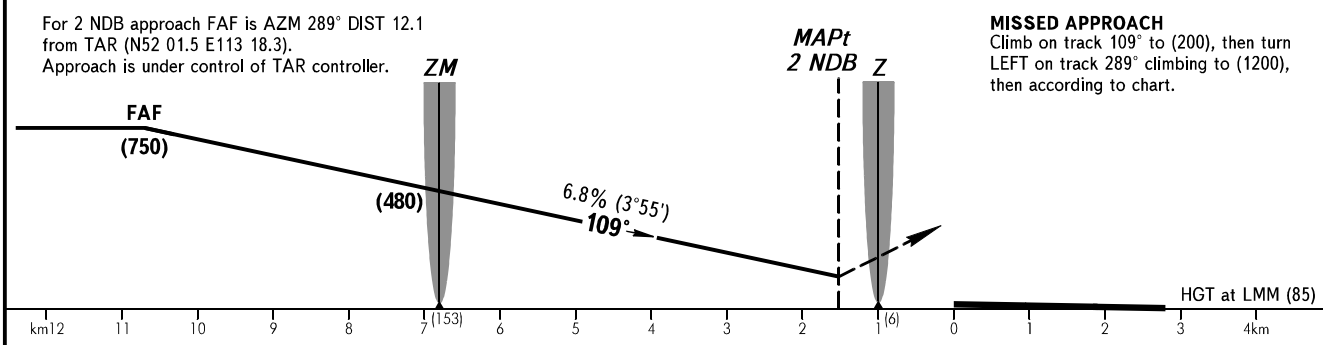
INSTRUMENT
APPROACH
CHART - ICAO

RADAR	122.0
TOWER	118.1

CHITA, RUSSIA
KADALA
2 NDB RWY 11



Alt set: -mm(hPa on req);
-QFE(QNH on req).
BEARINGS AND TRACKS ARE MAG.
ELEV, HGT, ALT IN METRES
DISTANCES ARE IN KILOMETRES



		OCA/H	A	B	C	D
Straight-in Approach	LOM(ZM)	WO RAD CTL	1391(699)	1391(699)	1391(699)	1391(699)
		With RAD CTL	884(192)	884(192)	884(192)	884(192)
	LMM(Z)	WO RAD CTL	1391(699)	1391(699)	1391(699)	1391(699)
		With RAD CTL	1058(366)	1058(366)	1058(366)	1058(366)
	2 NDB	WO RAD CTL	1338(646)	1338(646)	1338(646)	1338(646)
		With RAD CTL	811(119)	811(119)	811(119)	811(119)

WARNING:
1. Descending on final is authorized only if steady operation of ACFT and GND landing equipment is provided and after the ACFT is confirmed by ATC to have captured the glide path (by distance).
2. On final between FAF and LOM descending below (480) is prohibited.

CHANGE: FL	GROUND SPEED	km/h	150	180	210	240	270	300	330	360	390	420	450
	LOM-THR 6800m	min:sec	2.43	2.16	1.56	1.42	1.30	1.22	1.14	1.08	1.03	0.58	0.54
	RATE OF DESCENT	m/s	2.9	3.4	4.0	4.6	5.2	5.7	6.3	6.8	7.4	8.0	8.6